

LEGEND

	Shaft, collapsed
	Shaft, open
	Shaft, capped or filled
	Depression
	Adit, blocked
	Adit, open
	Inclined Shaft
	Water flow
	Seepage
	Line of cross section

with name, where known

Version	Revision and completion notes	Date
A	Issued with report	11.04.2008

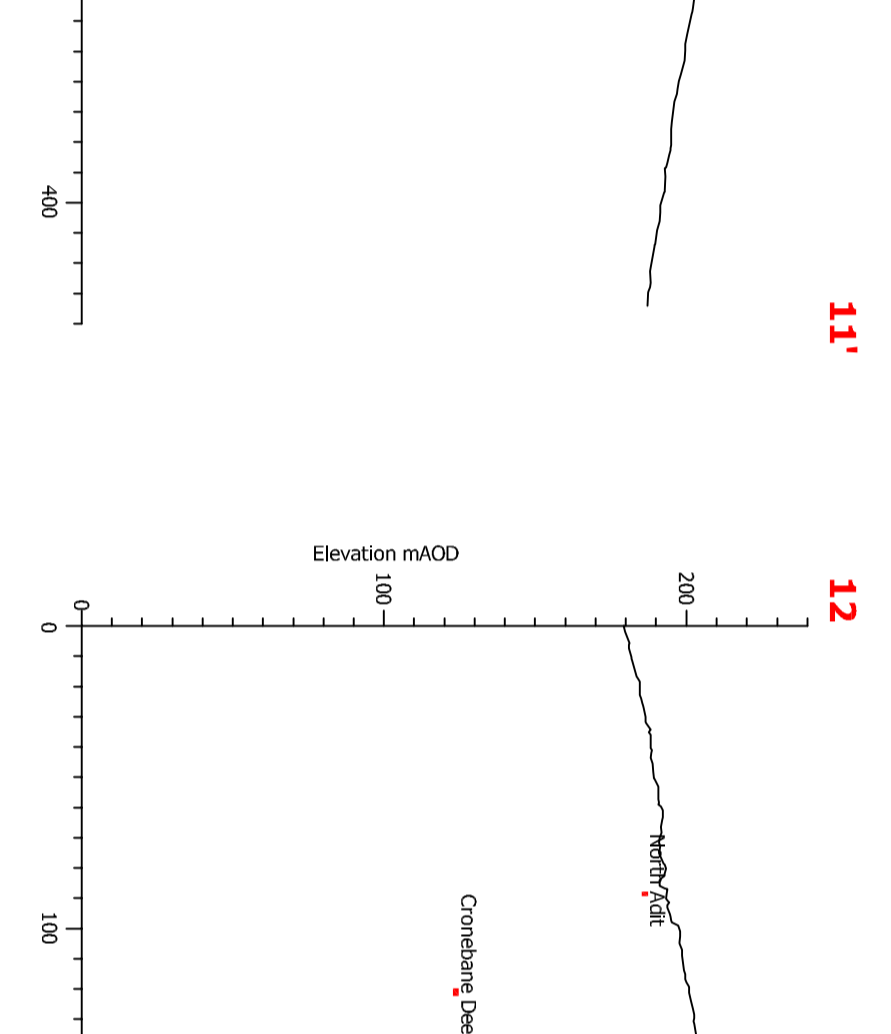
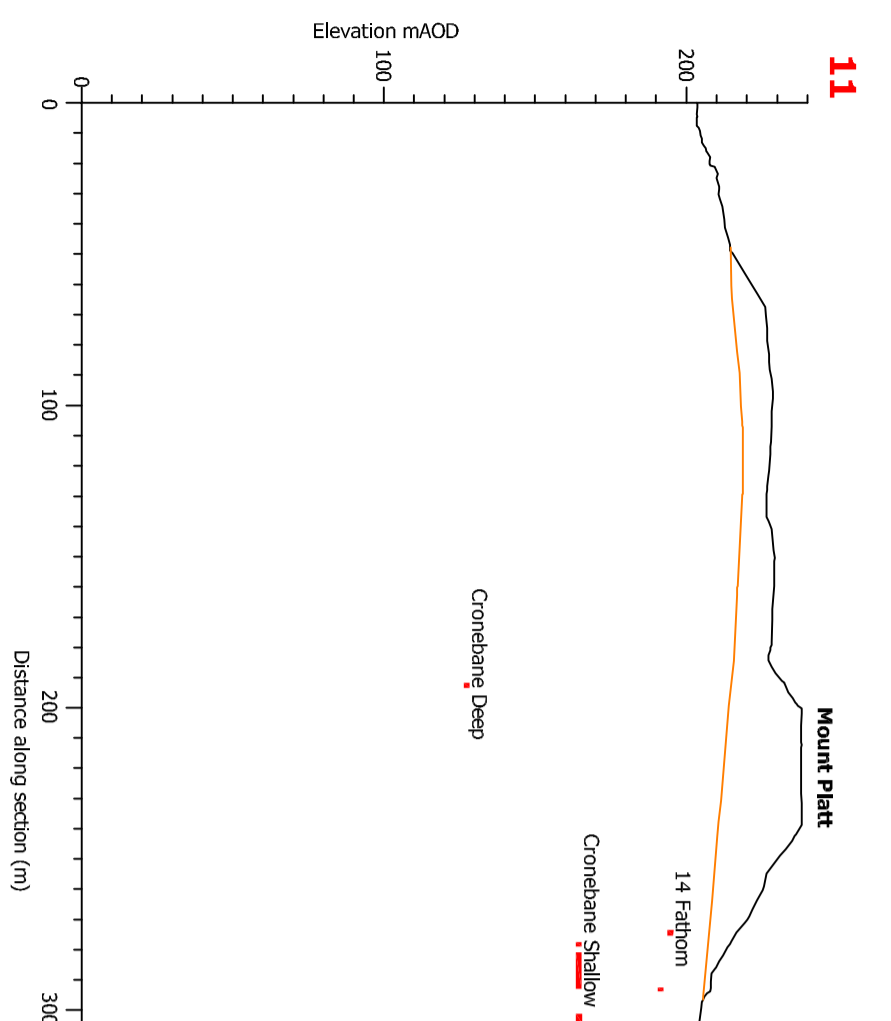
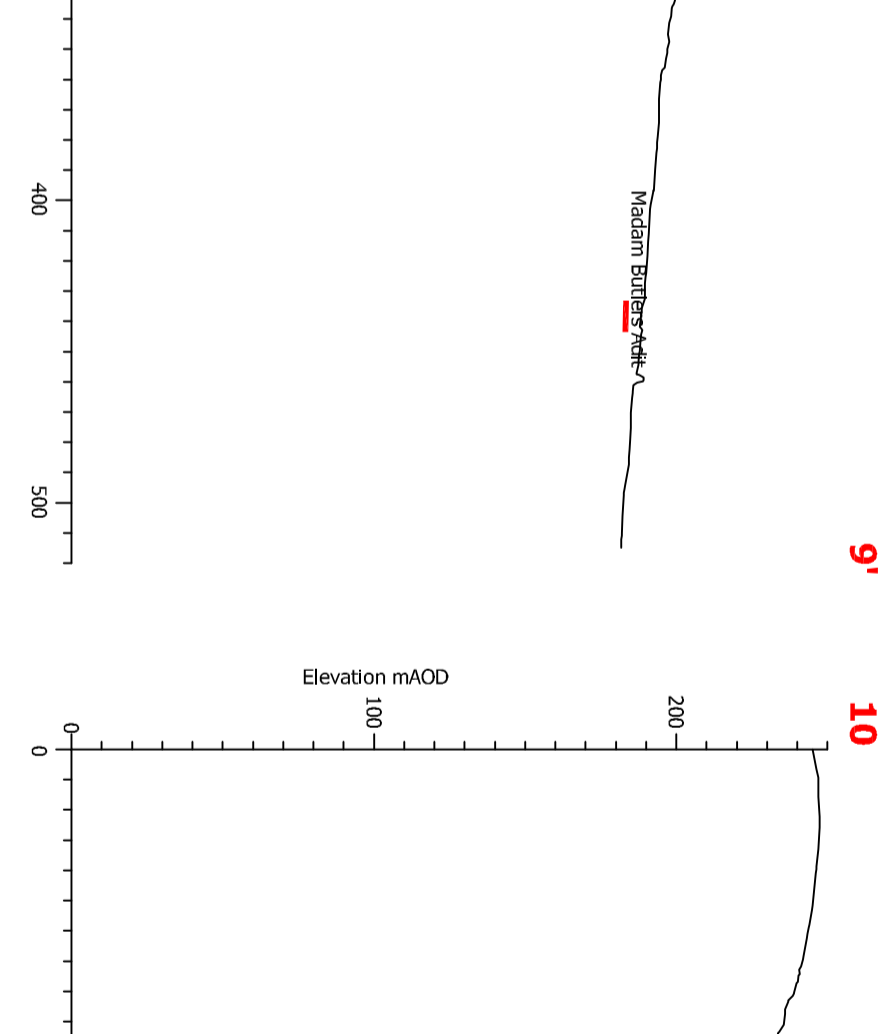
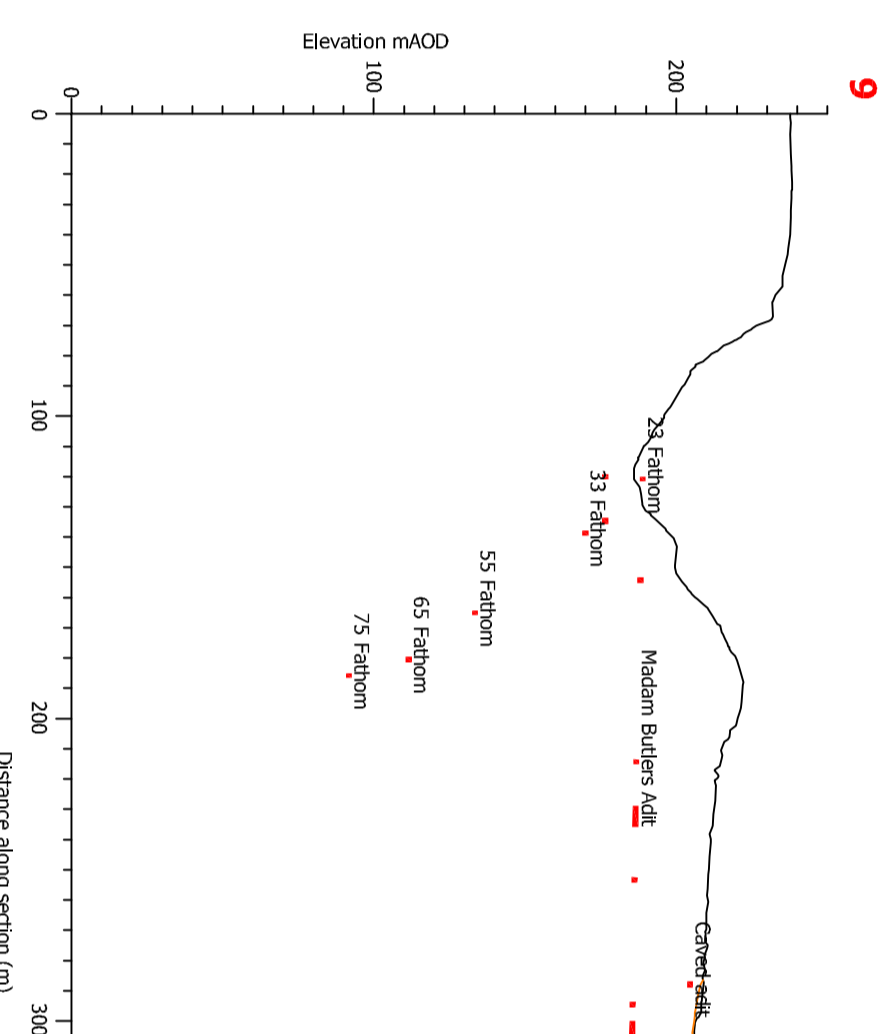
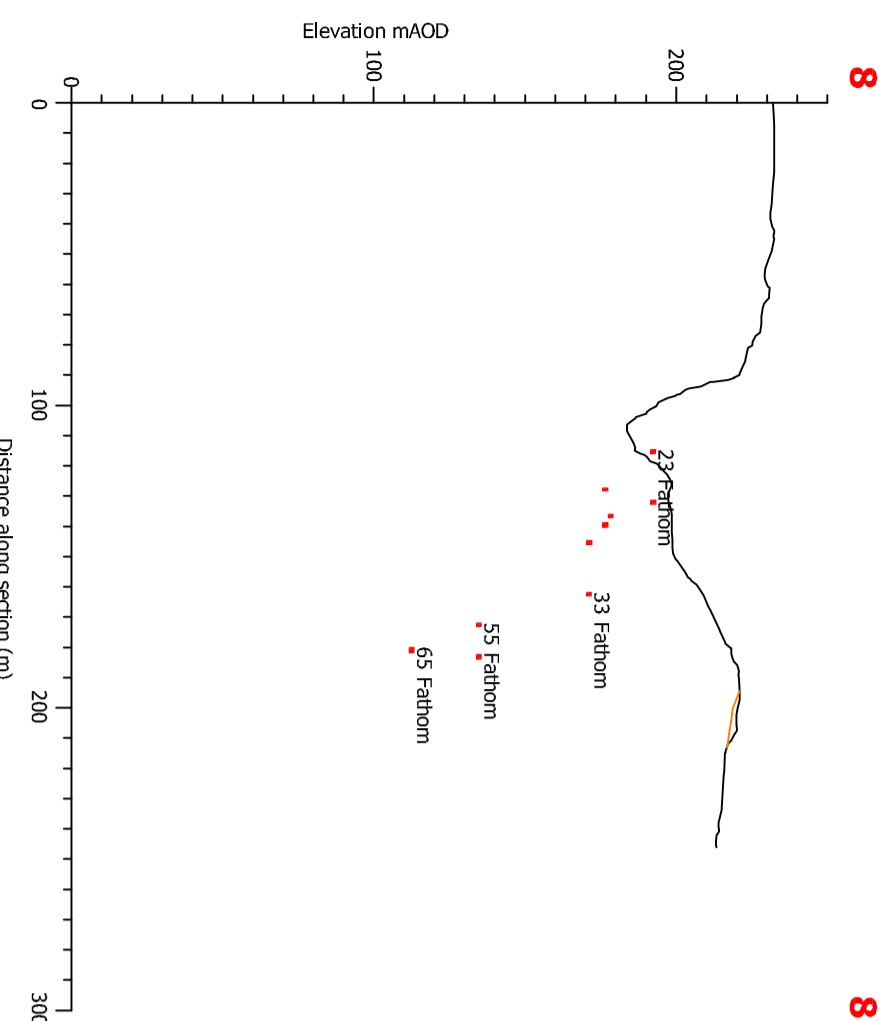
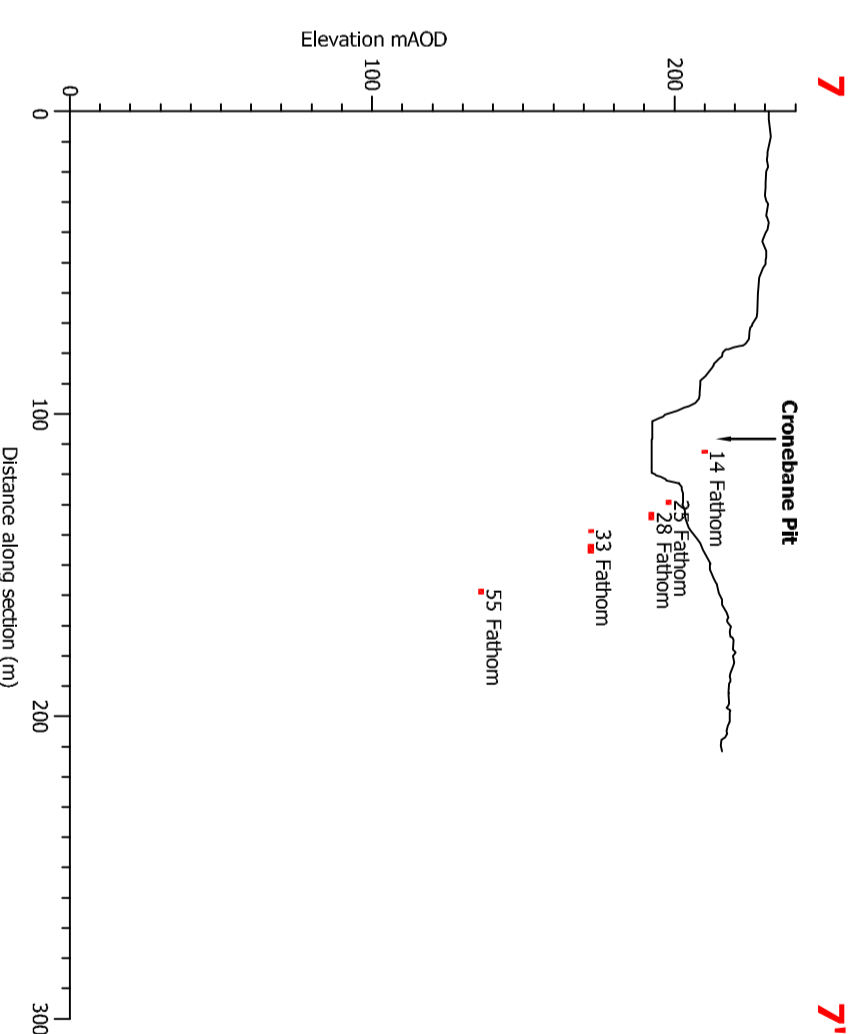
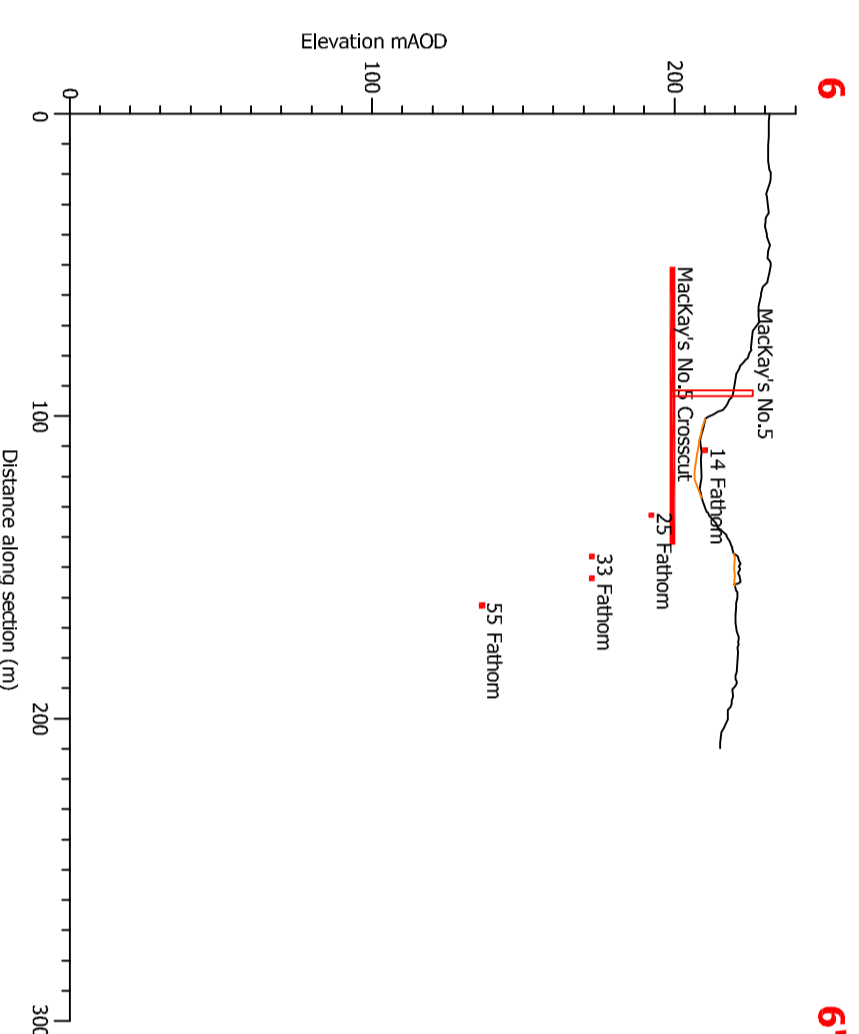
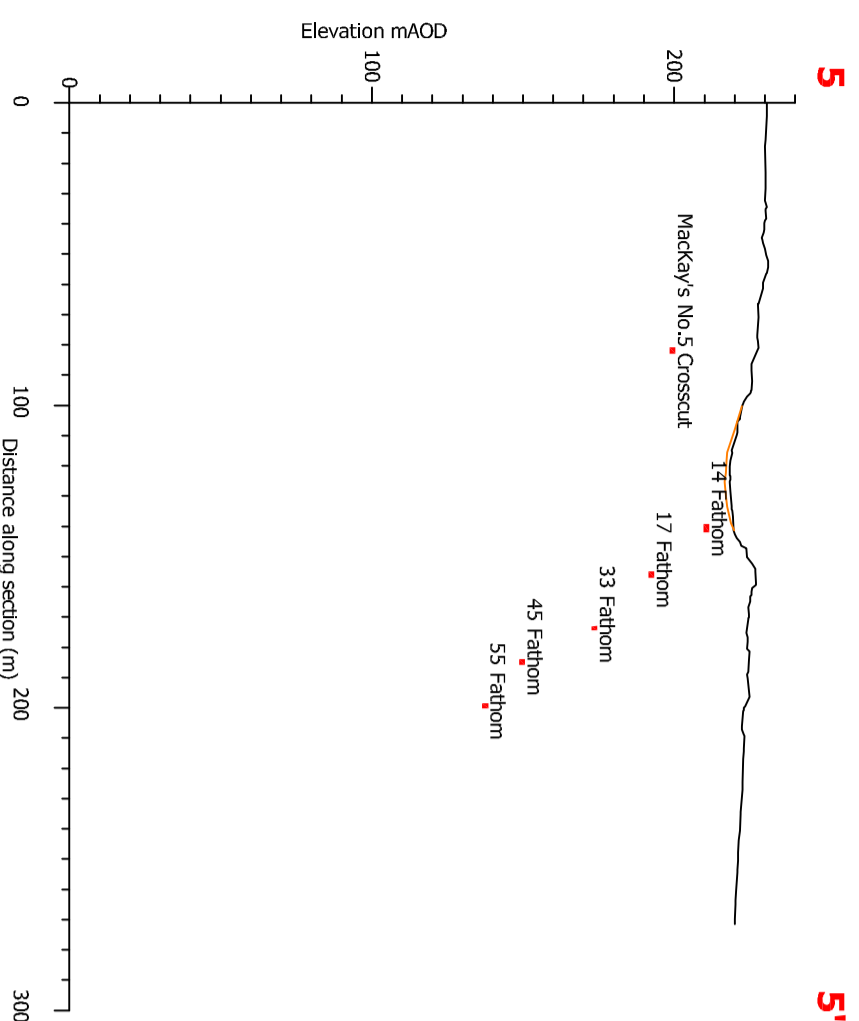
Client: CDM (Ireland) Limited
 Project: Avoca Mining Area
 Conebane and Mount Platt mine workings

Avoca Mining Area
 Conebane and Mount Platt mine workings

Upton House
 Motrai Street, Chockbury
 Oxford OX7 3P7
 United Kingdom

tel +44 (0) 1608 810074
 fax +44 (0) 1608 810073
 e-mail info@gwp.uk.com
 web www.gwp.uk.com

Date	11.04.2008	Drawn	AEC/LS	Checked	AEC	Scale	1:2500
Drawing Ref	AVOCA0804	Drawing No	10	Version	A		



LEGEND

	Current ground surface
	Base of spoil (approximate level)
	Level in mine workings pre 1960 with name
	Knight Tunnel name
	Extent of stopes, post 1960
	Incline in mine working
	Shaft

NOTES

- Location and levels of mine workings taken from old mine plans
- Where workings are shown above ground level or above base of fill, they have been removed by the open pit workings

Version	Revision and completion notes	Date
A	Issued with report	11.04.2008

Client
CDM (Ireland) Limited

Project
Avoca Mining Area

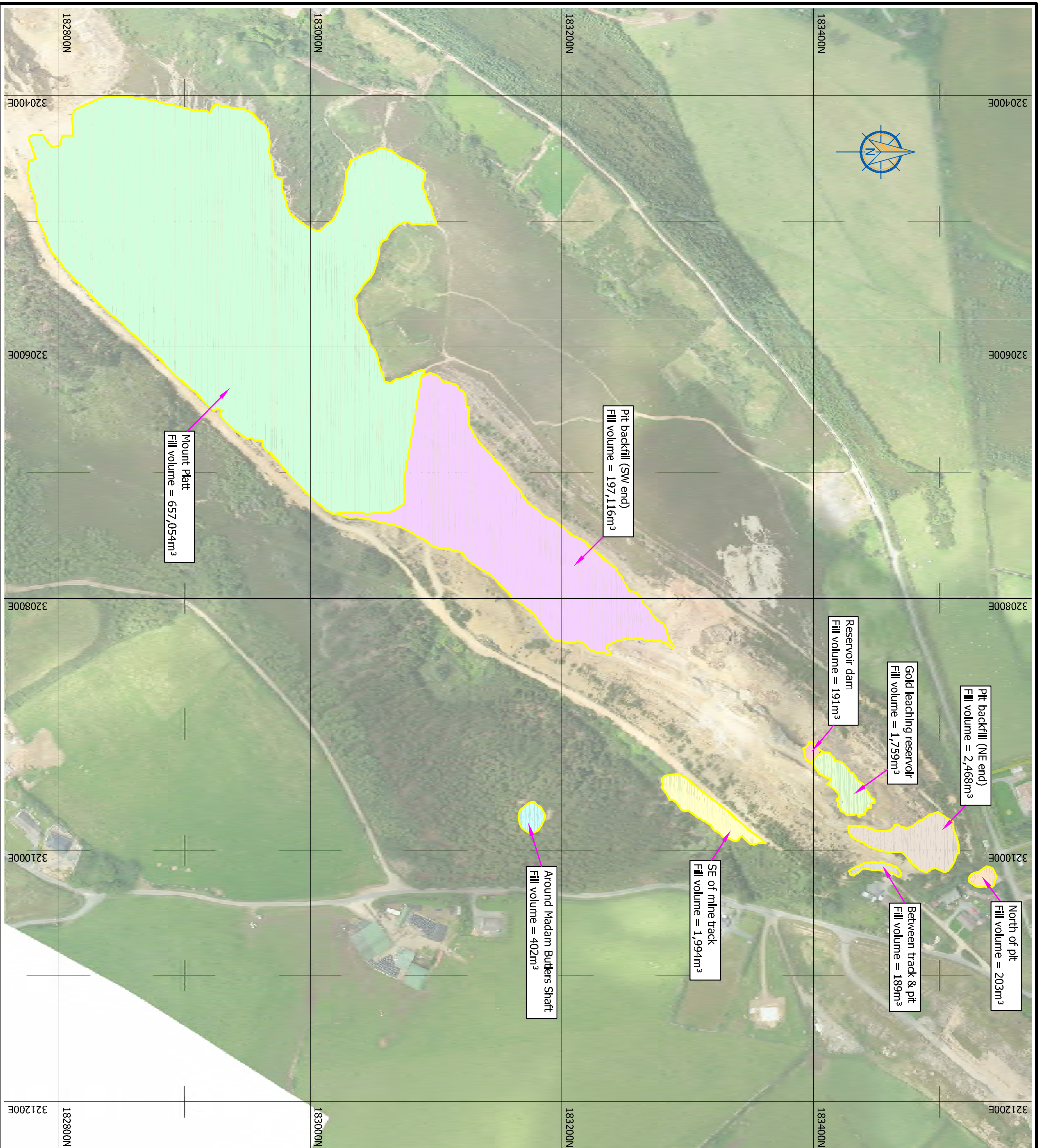
Cross sections of Cronebane and Mount Platt areas showing mine workings

GWP consultants

161 444 (0) 1 608 810034
161 444 (0) 1 608 810093
161 444 (0) 1 608 810093
info@gwppluk.com
www.gwppluk.com

161 444 (0) 1 608 810034
161 444 (0) 1 608 810093
161 444 (0) 1 608 810093
info@gwppluk.com
www.gwppluk.com

Date	11.04.2008	Drawn	AEC/EMB	Checked	AEC	Scale	1:2500
Drawing Ref	AOCA0804	Drawing No	11	Version	A		



Version	Revision and completion notes	Date
A	Issued with report	11.04.2008

Client
CDM (Ireland) Limited

Project
Avoca Mining Area

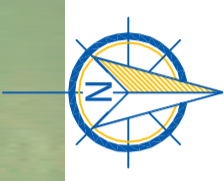
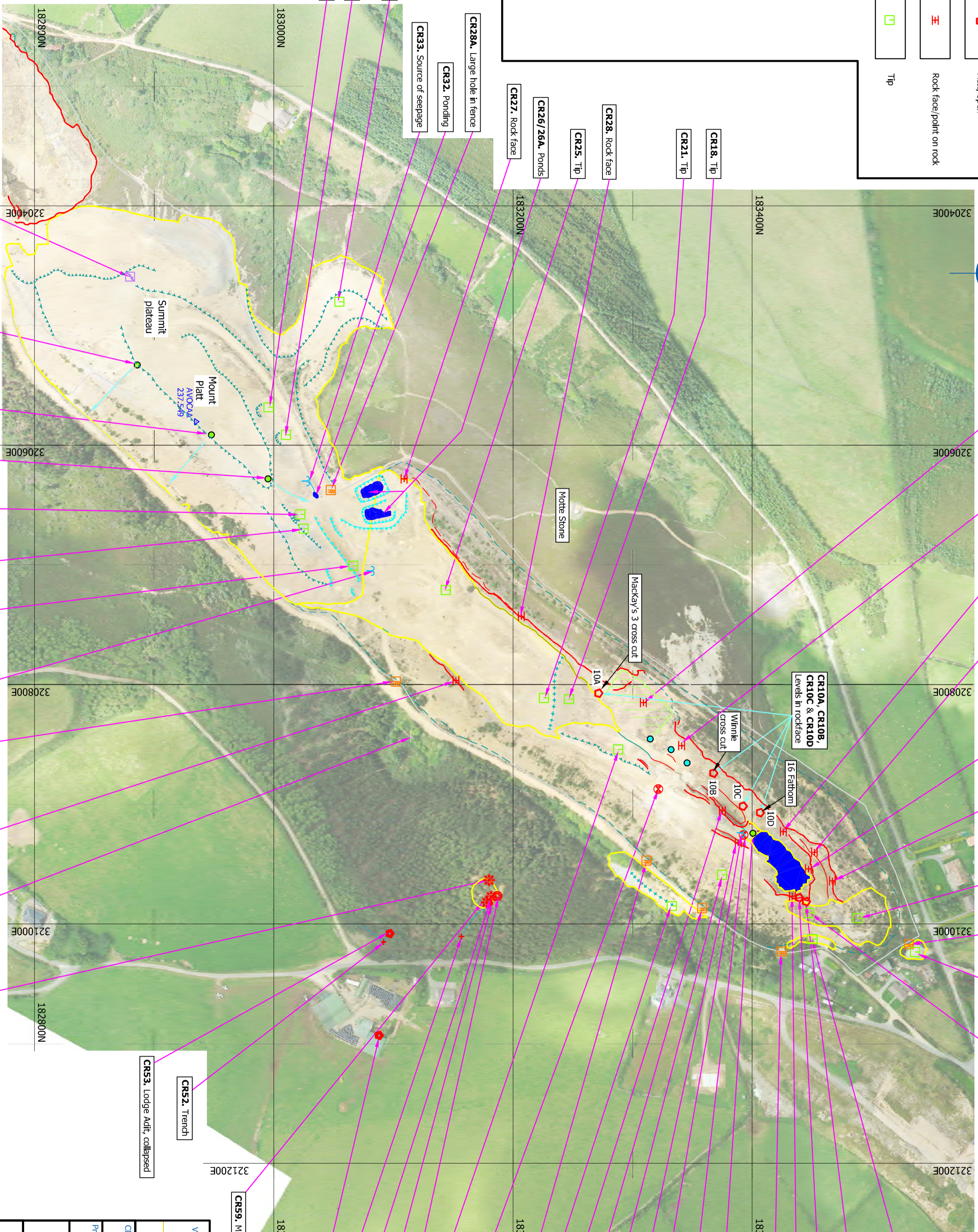
Cronebane and Mount Platt spoil areas and volumes

GWP consultants
 Upton House
 Market Street, Cholbury
 Oxfordshire OX7 9PJ
 United Kingdom
 Tel: +44 (0)1608 810374
 Fax: +44 (0)1608 810093
 e-mail: info@gwp.co.uk
 web: www.gwp.co.uk

Date	11.04.2008	Drawn	AEC/LS	Checked	AEC	Scale	1:3000
Drawing Ref	AVOCA0804	Drawing No	12	Version	A		

LEGEND

	Identified area		Adit, blocked
	Slope		Adit, open
	Borehole		Rock face/point on rock
	Excavation		Tip
	Seepage		
	Slope		
	Boulder		
	Hole in fence		
	Shaft, collapsed		
	Shaft, open		
	Shaft, capped or filled		
	Depression		



Version	Revision and completion notes	Date
A	Issued with report	11.04.2008

Client	CDM (Ireland) Limited
Project	Avoca Mining Area
Cronane and Mount Platt features	

Date	11.04.2008	Drawn	AEC/IS	Checked	AEC	Scale	1:2500
Drawing Ref	AVOCA0804	Drawing No	9	Version	A		

<p> GWP consultants Upon House Wickes Street, Chockbury Oxford OX7 3P7 United Kingdom Tel +44 (0)1608 810074 Fax +44 (0)1608 810073 email info@gwp.uk.com web www.gwp.uk.com </p>	<p> GWP consultants 161 +44 (0)1608 810074 10x +44 (0)1608 810073 email info@gwp.uk.com web www.gwp.uk.com </p>
---	---