

AIRBORNE MAGNETICS INTERPRETATION INITIATIVE

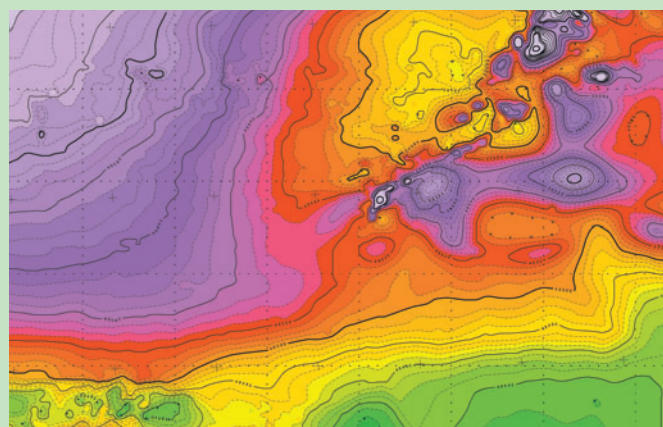
**EXPLORATION
AND MINING
DIVISION
IRELAND**

Free Geophysical Interpretation Central Basin Zinc Province

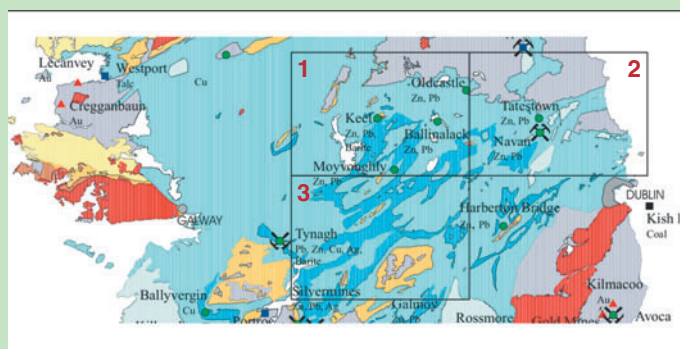
This initiative is a joint collaboration between the Exploration and Mining Division and PGW Europe Ltd. to reprocess and interpret newly released high resolution airborne magnetic datasets over the highly prospective Central Ireland Basin zinc province. The aim is to stimulate the identification of new exploration targets over an area of some 15,000 sq. km.

What is provided free

- A suite of 1:100,000 scale maps and reports in digital format for each of three adjoining blocks, consisting of:
 - Pole reduced total field magnetics
 - Geophysical interpretation – structure and lithology
 - Geophysical interpretation – regional basement terranes

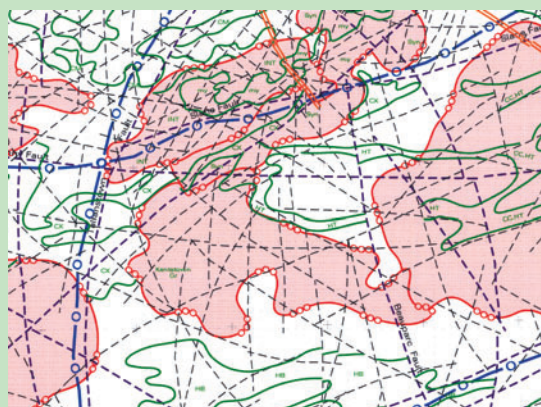


- Mineral deposit map with exploration permit areas
- Report covering datasets, processing techniques, basement terranes, mineral deposits, structural controls of mineralisation



Available from PGW

- Original processed products
- Linked / leveled total magnetic field
- Individual and composite grids.
- Enhanced images for interpretation (1VD, RTP, AS, Euler)



Watch
www.minex.ie

**Block 2 now
available**



Department of Communications, Marine and Natural Resources