

# **EXPLORATION AND MINING DIVISION IRELAND**

• TALC • CALCITE • MARBLE • SILICA SAND • ZINC • LEAD • COPPER • GOLD • SLATE •

## **MINERALS DEVELOPMENT ACTS, 1940-1999**

### **REPORT BY THE MINISTER FOR COMMUNICATIONS, MARINE AND NATURAL RESOURCES FOR THE SIX MONTHS ENDED 31 DECEMBER 2006**

**IN ACCORDANCE WITH SECTION 77 OF THE MINERALS  
DEVELOPMENT ACT, 1940 AND SECTION 8 OF  
THE MINERALS DEVELOPMENT ACT, 1979**



Department of Communications,  
Marine and Natural Resources.  
*Roinn Cumarsáide, Mara agus  
Acmhainní Nádirtha*

## OTHER PUBLICATIONS & PRODUCTS AVAILABLE FROM THE EXPLORATION AND MINING DIVISION

### General

- Report by the Minister for Communications, Marine and Natural Resources, for the six months ended 30<sup>th</sup> June, 2006. MP 13/06. 65pp.
- Exploration and Mining Facilities. MP 07/06. 6pp.
- Land of Mineral Opportunities. MP 05/06. 6pp.
- Environmental Safeguards - the Irish Way. MP 06/06. 4pp.
- Mine Waste Management Workshop, Dublin, 2002. Available on CD. MP 25/03
- Industry News (March 2006). MP 08/06. 6pp.
- Gold in Ireland. MP 05/04. 4pp.
- The "Top 55" Deposits. MP 07/05. 14pp.
- Airborne Data Release Initiative. MP 06/05. 4pp.
- Exploration Permit Areas and Status (Feb. 2006) on CD MP 03/06.
- Gold in Ireland (localities etc.) on CD. MP 10/04
- State Mining and Prospecting Facilities and Industry News (May 2006) MP 09/06 54pp.
- Zinc and Lead in Ireland. MP 04/06. 6pp.

### Minfo Leaflets

- Exploration Focus - Clontibret Gold Prospect (1993). Minfo 10/93. 4pp.
- Glangevlin Gypsum Deposit (1995). Minfo 12/95. 4pp.
- Guidelines for Good Environmental Practice in Mineral Exploration. Minfo 2/04. 4pp.
- Consultants and Contractors in Ireland. Minfo 1/06. 6pp.
- Fiscal Framework. Minfo 2/06. 4pp.
- Guidelines for Regional Airborne Geophysical Surveying for Minerals. Minfo 5/02. 2pp.
- Support Agencies. Minfo 1/04. 2pp.

### Exploration Data Release (available on CD)

- Airborne magnetic survey (1995) Midlands, Oldtown and Harberton Bridge areas. MP 09/01. 43pp.
- Airborne magnetic and TEM survey (1995) Lisheen/Galmoy, Clonmel and Tullamore areas. MP 10/01. 14pp.
- Airborne magnetic and TEM survey (1996) Galmoy area. MP 11/01. 11pp.
- Airborne magnetic and radiometric survey (1996) Inishannon and Lismore areas. MP 13/01. 12pp.
- Airborne magnetic and TEM survey (1996) Lisheen, Silvermines and Lough Derg areas. MP 14/01. 12pp.
- Airborne magnetic and TEM survey (1997) over Carrickmacross, Newbridge, Summerhill, Tullamore and Lisheen and Navan test areas. MP 16/01. 16pp.
- Exploration data release (to 1996) over parts of Co. Tipperary and Co. Offaly. MP 03/02.
- Airborne TEM and magnetic survey (1997) over the Portumna and Clare areas. MP 09/02. 12pp.
- Airborne TEM and magnetic survey (1997) over the Tullamore area. MP 11/02. 12pp.
- Airborne TEM and magnetic survey (1998) over the Limerick, Gort and Newbridge South area. MP 13/02. 11pp.
- Airborne TEM and magnetic survey (1998) over the Limerick area MP 15/02. 9pp.
- Airborne TEM and magnetic survey (1998) over the Silvermines area. MP 16/02. 11pp.
- Airborne magnetics survey (1997) over the Rathdowney area. MP 17/02. 8pp.
- Airborne magnetic survey (1998) over the Ferbane and Lough Derg (2) areas MP 20/02. 13pp.
- Airborne magnetics survey (1998) over the Tulla, East Clare, area. MP 21/02. 9pp.
- Airborne magnetic survey (1998) over the Tipperary area. MP 22/02. 9pp.
- Arcon Airborne Magnetic Survey (1996) over the Galmoy area. MP 23/02. 8pp.
- Exploration data release (to 2002) over parts of Cos Galway, Roscommon, Westmeath. Offaly. MP 02/03.
- BHP Airborne TEM and Magnetic survey (1998) over Fermoy East and West, Ballinalack, Carrickmines East, Clare, Lough Sheelin and Mohill areas. MP 14/03. 10pp.
- Exploration data release (1972-2001) over parts of Cos Meath, Westmeath and Offaly. MP 19/03.
- Exploration data release (1970-2002) over parts of west-central Co. Meath. MP 24/03
- Billiton/Noranda airborne TEM & magnetic survey (1998) over the Moate area. MP 15/03. 10pp.
- Navan Resources airborne magnetic survey (1998) over the Tynagh area. MP 16/03. 9pp
- Tara Mines Ltd. airborne magnetic, VLF and radiometric survey (1999) over the Limerick area MP 23/03. 10pp.
- Exploration data release update (to 2002) over parts of Co. Tipperary & Co. Offaly MP 03/04.
- The Amcorp Ireland Ltd. Airborne Magnetic Survey (1999) over the North Cork Area. MP 18/04. 9pp.
- Exploration data release (1981 to 2003) over parts of Cos. Longford and Westmeath. MP 19/04
- Exploration data release (1987 to 2002) over parts of Cos. Clare, Limerick and Tipperary. MP 20/04
- Exploration data release - The 'Rathdowney Trend' Pt. 1 - North (1981 to 2002) Cos. Kildare, Kilkenny and Laois. MP 21/04
- The Ballinalack Zinc-Lead Deposit, Co. Westmeath (March 2005) MP 04/05.
- Exploration data release - The 'Rathdowney Trend' Pt. 2 - South (1986 to 1998) Cos. Tipperary, and Kilkenny. MP 05/05.
- The Cregganbaun Gold Prospect, Co. Mayo (May 2005) MP 12/05.

Copies of the above, including this publication, are available FREE from the Exploration and Mining Division, Department of Communications, Marine and Natural Resources, Beggars Bush, Haddington Road, Dublin 4.

E-mail: [EMDTechnical.Info@dcmnr.ie](mailto:EMDTechnical.Info@dcmnr.ie) Website: [www.emd.ie](http://www.emd.ie)

**DEPARTMENT OF COMMUNICATIONS,  
MARINE AND NATURAL RESOURCES**

**MINERALS DEVELOPMENT ACTS, 1940-1999**

**REPORT BY THE MINISTER FOR COMMUNICATIONS,  
MARINE AND NATURAL RESOURCES  
FOR THE SIX MONTHS ENDED  
31 DECEMBER 2006**

**IN ACCORDANCE WITH SECTION 77 OF THE MINERALS  
DEVELOPMENT ACT, 1940 AND SECTION 8 OF  
THE MINERALS DEVELOPMENT ACT, 1979**

**EXPLORATION AND MINING DIVISION**  
*Minerals Production MP 01/07*

---

**DUBLIN**  
**PUBLISHED BY THE STATIONERY OFFICE**

---

**To be purchased through any bookseller, or directly from the  
GOVERNMENT PUBLICATIONS SALE OFFICE  
SUN ALLIANCE HOUSE  
MOLESWORTH STREET, DUBLIN 2**

**This report may also be found on the Internet  
at [www.emd.ie](http://www.emd.ie) where it was posted shortly after  
its presentation to the Oireachtas**

---

**Sale Price: €12.70**

**© Government of Ireland 2007**

## **MINERALS DEVELOPMENT ACTS, 1940-1999**

### ***Report by the Minister for Communications, Marine and Natural Resources for the Six Months ended 31 December 2006***

This **Report** is compiled under Section 77 of the Minerals Development Act, 1940 and Section 8 of the Minerals Development Act, 1979.

The **Report** sets out details of the State Mining Leases, State Mining Licences and Prospecting Licences current as of **31 December 2006** and the total amount of all moneys collected by the Minister under or by virtue of any such Lease or Licence or otherwise in connection with the Minerals Development Acts for the six months ended **31 December 2006**.

As of **31 December 2006** there were:

- **12** extant State Mining Leases
- **10** extant State Mining Licences
- **2** extant State Mining Permissions
- **298** extant Prospecting Licences

In the period of six months ended **31 December 2006**:

- **40** Prospecting Licences were granted
- **16** Prospecting Licences were surrendered
- Total receipts amounted to **€3,627,717.41**.

### **HIGHLIGHTS OF PERIOD**

- Following several years of very low metal prices (which resulted in production cut backs), the upward trend in base metal prices continued in the second half of 2006 as physical shortages developed. The average zinc price for the period was €2,942 per tonne, an increase of over €700 on the first half of the year. As a result, the three operating base metal mines, Boliden Tara Mines Limited at Navan, Co. Meath; The Lisheen Mine, Co. Tipperary; and Arcon Mines Limited, Galmoy, Co. Kilkenny, enjoyed their first profitable year for some time.
- At the Navan zinc/lead mine in County Meath, the operator, Boliden Tara Mines Limited commenced work on a State Mining Permission which was granted to the company to allow access for a limited period to some of the ore in a major south west extension of the mine, known as the SWEX-B. An application for a new State Mining Facility for the SWEX-B is being processed and is expected to be finalised in 2007. The company also commenced work under a State Mining Lease in Nevinstown under lands adjacent to the former Bula property.
- Directive 2006/21 on the Management of Waste from the Extractive Industry, which sets common standards for the industry across the EU, came into force on 1 May 2006. It will have to be implemented by April 2008. The Department is providing representation at the Technical Adaptation Committee on Waste which is assisting the European Commission in preparing measures on various issues such as the interpretation of the definition of inert waste and technical guidelines for waste characterisation.

- Irish Gypsum continued their progress towards full production at their new underground gypsum mine at Drummond, Co. Monaghan.
- The Raw Materials Supply Group, a multi-stakeholder forum under the auspices of DG Enterprise and Industry continued its work. This included publication of the second report on Sustainable Development Indicators. A final draft report was produced on the competitiveness of the extractive industry in the EU. It is expected that it will be published as a Staff Working Paper in 2007.
- The Heads of the Minerals Development Bill 2006, approved by the Government in June, have been referred to Parliamentary Counsel in the Office of the Attorney General for drafting and the Bill is expected to be published in 2007.

# CONTENTS

	<u>PAGE</u>
<b>RECENT DEVELOPMENTS IN EXPLORATION AND MINING</b>	<b>1</b>
<b>TOP TEN EXPLORATION COMPANIES</b>	<b>7</b>
<b>PART 1: STATE MINING LEASES AND LICENCES</b>	<b>8</b>
Anglo American Lisheen Mining Limited, Ivernia Lisheen Mining Limited & Lisheen Milling Co. (Lease No. 140)	9
Boliden Tara Mines Limited (Licence No. 2)	9
Boliden Tara Mines Limited (Licence No. 3)	10
Boliden Tara Mines Limited (Licence No. 4)	10
Boliden Tara Mines Limited (Licence No. 5)	10
Boliden Tara Mines Limited (Lease No. 116)	11
Boliden Tara Mines Limited (Permission No. 64)	11
Boliden Tara Mines Limited (Lease No. 144)	11
Connemara Marble Products Limited (Lease No. 30)	12
Dan Morrissey (Ireland) Limited (Permission No. 64)	12
Eurostone Limited (Lease No. 143)	12
Fleming's Fireclays Limited (Lease No. 23)	13
Fleming's Fireclays Limited (Lease No. 37)	13
Galmoy Mines Limited (Licence No. 1)	14
Galmoy Mines Limited (Licence No. 6)	14
Galmoy Mines Limited (Licence No. 8)	15
Galmoy Mines Limited (Licence No.10)	15
Galmoy Mines Limited (Licence No. 9)	16
Irish Gypsum Limited (Lease No. 139)	16
Joyce's Marble Quarries Limited (Lease No. 17)	17
Joyce's Marble Quarries Limited (Lease No. 79)	17
Ormonde Brick Limited (Licence No. 134)	17
Ormonde Brick Limited (Lease No. 137)	18
Roadstone Provinces Limited (Lease No. 100)	18
<b>PART 2: MINERALS PROSPECTING LICENCES</b>	<b>19</b>
Rates of Application & Consideration Fees for minerals prospecting licences	19
Anglo American Lisheen Mining Limited	20
Asarco Exploration Inc.	21
Aurum Mineral Resources Limited	22
Aurum Mineral Resources Limited – Ormonde Mining Plc.	24
Belmore Resources Plc.	25
BHP World Exploration Inc.	25
Boliden Tara Mines Limited	26
Boliden Tara Mines Limited - Aurum Exploration Limited	33
Brown Gary Robert	33
Central Mining Finance	34
Clare Calcite Limited	34
Connemara Mining Company Limited	35
Conroy Diamonds and Gold Plc.	38
Dan Morrissey (Ireland) Limited	40
Fractore Pty. Limited	40
Gannon John	41
Glencar Mining Plc.	41
Jadebay Limited	41

Kellys of Fantane (Concrete) Limited	42
Kenmare Resources Plc.	42
Lundin Mining Exploration Limited	43
Minco Ireland Limited	45
Minco-Westland Exploration Limited	47
Mineral Estates (Ireland) Limited	47
Oriel Selection Trust	48
Ormonde Brick Limited	48
Ovoca Gold Plc.	49
Rennicks and Bennett Limited	49
Teck Cominco Limited	50
Westland Exploration Limited	55
<b>PART 3: RECEIPTS</b>	<b>56</b>
Receipts under Minerals Development Acts, 1940 to 1999	
Receipts under Mines & Minerals Act, 1931	
<b>PART 4: MINERALS ACQUISITION ORDERS MADE UNDER THE MINERALS DEVELOPMENT ACT 1940</b>	<b>57</b>
<b>PART 5: MAIN LEGISLATION GOVERNING MINERALS PROSPECTING AND DEVELOPMENT IN IRELAND</b>	<b>58</b>
<b>PART 6: OTHER PUBLICATIONS AND PRODUCTS AVAILABLE FROM THE EXPLORATION AND MINING DIVISION OF THE DEPARTMENT</b>	<b>59</b>
<b>PART 7: DÁIL QUESTIONS ANSWERED BY THE MINISTER FOR COMMUNICATIONS, MARINE AND NATURAL RESOURCES IN THE SIX MONTHS ENDED 31 DECEMBER 2006 IN RELATION TO MINERALS MATTERS</b>	<b>60</b>

## LIST OF FIGURES

<b>FIG. 1:</b> County map of Ireland showing locations mentioned in the text	2
<b>FIG. 2:</b> Map showing current status of State Mining and Prospecting Areas	
Inserted after page 6	

## Recent Developments in Exploration and Mining

During the second half of 2006, the base metal mining sector continued to benefit from historically high zinc prices. On 30th October 2006, the price of zinc reached an all-time high of \$4,202 per tonne, the highest since the metal was first listed in 1915. The price represented an increase of 170% since this time last year. Ireland continued to account for a significant amount of Western European mine production of zinc and lead. In 2006, Ireland produced 40% of Western Europe's zinc (41% in 2005) and 27% of its lead (as in 2005).

There has been a significant increase in the number of Prospecting Licences applied for, with the emphasis on zinc exploration.

### Development

- **Navan (Boliden)**

The underground mine of **Boliden Tara Mines** at **Navan**, Co Meath, is the largest zinc mine in Europe, and the fifth largest in the world. Production during 2006 amounted to 2.7Mt grading 7.63% Zn and 1.39% Pb. This produced 350,667t of zinc concentrate (54.8% Zn) and 40,347t of lead concentrate (58.5% Pb). Total production (1977-2006) amounted to 65.5Mt grading 8.36% Zn and 2.00% Pb. At the end of 2005 (the last year for which figures are available), Tara's JORC Classified Ore Reserves for the entire orebody amounted to 15.9Mt at 8.5% Zn and 1.8% Pb, with an additional 17.1Mt of Mineral Resources grading 7.4% Zn and 2.1% Pb.

A State Mining Permission was granted to the company to allow extraction of a limited amount of ore from the SWEX-B, while processing of the application of a State Mining Lease for the orebody continued.

- **Lisheen (Anglo American)**

During 2006 **Anglo American** produced 1.53Mt of ore grading 12.30% Zn and 2.10% Pb from their underground mine at **Lisheen**, Co. Tipperary. This ore produced 319,494t of zinc concentrate (53.42% Zn) and 37,292t of lead concentrate (62.06% Pb). Total production (1999-2006) is 9.57Mt grading 11.79% Zn and 2.20% Pb. Reserves at end December 2006 were 11.32Mt grading 11.97% Zn and 1.85% Pb, with additional Resources of 2.25Mt at 13.63% Zn and 2.27% Pb.

- **Galmoy (Lundin Mining)**

Production during 2006 by **Galmoy Mines Ltd.** (a subsidiary of **Lundin Mining**) from their underground zinc-lead mine at Galmoy, Co. Kilkenny yielded 0.62Mt (tonnage milled) grading 11.8% Zn and 3.2% Pb. This resulted in 116,000t of zinc concentrate (51.76% Zn, 59 ppm Ag) and 21,000t of lead concentrate (63.5% Pb, 196 ppm Ag). Total production since start of mining to end 2006 was 5.67Mt at 11.4% Zn and 2.3% Pb. Reserves at the end of December 2005 (no later figures) were 3.55Mt at 14.7% Zn, 4.1% Pb and 26g/t Ag, with additional Resources (Measured and Indicated) of 1.61Mt at 10.9% Zn, 2.2% Pb and 43g/t Ag. In April 2006 the company had announced the discovery of significant new mineralization. Drilling had outlined a high grade extension of the K Orebody, (the K Southwest Zone), which contained a measured resource of 187,000t grading 15.7% Zn, 3.8% Pb and 39g/t Ag. Further drilling in 2006 extended the zone an additional 100 metres to the south. Also in the vicinity of the mine, a new zone, the CW Southeast Zone, has been outlined by seven vertical drillholes, in an area of 100m x 50m, although it is not yet clear what effect, if any, this new zone will have on the mine's reserves and resources.

## Exploration

### A. Company Activities

**Boliden Tara Mines** continued its regional exploration in Co Limerick, comprising geophysics (including down-hole EM), geochemistry and drilling in both the Adare and Kilmallock blocks. Drilling is continuing, where two rigs are in operation. In Co Wexford, the exploration effort has involved a major geological review of the Ordovician volcanic belt, aided by VMS specialists from Sweden, followed by ground EM. Diamond drilling in this area is planned. Following a decision by Boliden to expand regional exploration in both Sweden and Ireland, the company made a major application for 65 additional Prospecting Licences in June 2006.

In October, **Conroy Diamonds and Gold** announced that they were undertaking a detailed review of the Tullybuck-Lisglassan area of Co. Monaghan. The initial stage of the review consisted of a detailed re-examination of the entire drill core from the area, including core drilled by previous operators. This work has enabled the company to identify a number of additional mineralised intersections, and some 400m of this has been assayed for the first time. Following receipt of the results, the company "...has been able to increase the dimensions of some of the previously identified mineralised zones."

**Lundin Mining Exploration Limited**, in addition to their minesite exploration, has been carrying out exploration drilling at Rapla, approx. 6km northeast of the Galmoy Mine, and 500 metres southwest of the known Rapla prospect. The first of six holes to be drilled intersected semi-massive to massive sulphide mineralization over 3.62m (545m depth), grading 9.79% Zn and 1.99% Pb. This included 1.92m grading 15.71% Zn and 3.64% Pb. In Keel, Co Longford, Lundin are completing compilation and reinterpretation of historic exploration data, and a programme of surface geophysical surveying (IP and Gravity) is underway. Lundin expect that this work will identify new targets for drilling.

**Minco PLC** (23.6%) and joint venture partner **Falconbridge** (76.4%), now a subsidiary of **Xstrata PLC**, continued their drilling programme on the Pallas Green project in east Co Limerick, where five rigs were employed last year. In October 2006, Minco announced additional results from the Caherconlish area, where the company is "...evaluating three distinct but related zones of zinc and lead mineralisation. All of the prospects remain open in a number of directions and we believe that two of them may be spatially associated with the same northwest-trending fault. Each of the prospects demonstrates significant high grade zinc to be present in association with lesser values of lead and silver, together with extensive, massive to semi-massive pyrite mineralisation. The development of very extensive areas of alteration features such as the pyrite mineralisation and the black matrix breccias, which are also closely associated with the Lisheen and Galmoy orebodies in the Rathdowney Trend, confirm that the Pallas Green Trend remains prospective for the discovery of more than one deposit."



*County Map of Ireland showing locations mentioned in the text. Adare (AD), Caherconlish (CC), Castlegarde (CG), Galmoy (GY), Keel (KL), Kilmallock (KM), Lisheen (LI), Mullingar (MG), Navan (NA), Pallas Green (PG), Rapla (RP), Silvermines (SM), Tobermalug (TM), Tullybuck-Lisglassan (TL)*

### **The Pallas Green Prospect, Co Limerick**

The Pallas Green project comprises nine prospecting licences located in northeast Co. Limerick and south Co. Tipperary. Drilling by joint venture partners Minco (23.6%) and Falconbridge (76.4%) (now a subsidiary of Xstrata) is currently testing a portion of the Pallas Green Alteration Trend, a zone of structural and hydrothermal complexity, which extends for over 20 kilometres. The Alteration Trend is considered analogous to the Rathdowney Trend with which both the Lisheen and Galmoy zinc deposits are associated. The presence of pervasive alteration, with associated massive and disseminated pyrite together with sphalerite (zinc) and galena (lead) mineralization, has been demonstrated along the entire length of the Pallas Green Alteration Trend. Significant zinc mineralization has been discovered at the eastern end of the Trend at Castlegarde, and near the western end, adjacent to Caherconlish. The intervening section remains relatively unexplored except for a few widely spaced drill holes.

Drilling has outlined a northeast-oriented area, 5km long by up to 1.5km wide, containing widespread pyrite (massive to semi-massive to disseminated) with associated zinc-lead values. This includes the Caherconlish and Tobermalug prospect areas where two discrete zones of high-grade zinc and lead mineralization were discovered during 2005. It is believed that this area is bounded to the south by a major east-northeast trending fault, the Ballyneety Fault, offset by a series of northwest trending fault structures. This structural setting is also considered by the companies to be analogous to that associated with many of the major Irish zinc deposits including Lisheen, Galmoy and Navan.

Taken largely from Minco PLC announcement of 16<sup>th</sup> February 2006

Recent drilling included the following intersections: at **Caherconlish South**, 1.5km east of the town of Caherconlish, hole 2529-13 contained, 2.7m grading 9.34% Zn and 0.45% Pb, at 362m depth. Hole 2529-14, 100m away, intersected 2.5m at 14.96% Zn and 1.45% Pb, at a depth of 363m. Five other holes (previously reported), all contained significant zinc mineralization, all are 100m apart, and the whole occupy an area of mineralization 250m by 150m. Mineralization is open to the northwest and southeast.

At **Srahane West**, 3.7km NW of Caherconlish South, a zone of high grade mineralization is defined by four holes, 100m apart, in an area 200m by 150m, which remains open in a number of directions. Best intersections were 0.65m at 14.88% Zn, 2.86% Pb at 238m depth, 2.2m at 4.08% Zn, 0.07% Pb at 210m, 1.35m at 8.24% Zn, 0.03% Pb, also at 210m, and 1.2m at 7.65% Zn and 1.58% Pb at 242m. There is also extensive massive to semi-massive pyrite mineralization peripheral to the zinc mineralization.

The mineralization at **Tobermalug** is located 1.5km NE of Caherconlish, and comprises an area of zinc-lead mineralization, approx. 300m by 150m, outlined by four holes, 100m apart. Best intersections are 8.3m at 3.71% Zn , 0.42% Pb (at 356m), and 2.35m at 3.6% Zn, 0.09% Pb (at 375m). Mineralization remains open to the S, SE and W.

Minco stated in October 2006 that the ground between the three Caherconlish prospects has been explored by a small number of widely-spaced drillholes, 500m to 1km apart. All have intersected extensive alteration and sulphide mineralization.

## **B. Prospecting Licence Information**

At the end of December 2006, a total of twenty-six companies held 298 Prospecting Licences, primarily for base metals. A number of licence applications are still under review. During the six-month period from the beginning of July to the end of December there were forty new licences issued. Seven licences in locations in Counties Kildare, Meath, Offaly, Westmeath and Tipperary, were issued to **Teck Cominco Ireland Limited**. All licences were for base metals, barytes, silver, gold and PGMs, although the main target is zinc. Fourteen licences in Co Offaly, eleven in Galway, three in Laois, one each in Counties Kildare Tipperary and Roscommon, and one licence in Counties Galway and Roscommon were issued to **Boliden Tara Mines Limited**, all for base metals, barytes, silver and gold. **Gary R Brown** was issued with a second prospecting licence for base metals and silver in west Co Galway. The licenced area included the Murvey molybdenum prospect.

## **C. Exploration Support**

Over the past five years, the Exploration and Mining Division (EMD) has initiated a number of complementary exploration support programmes, which are now maintained on an ongoing basis. The common approach is to provide, free of charge and in digital format, all non-confidential data that is available through the Division, and to provide added value where the opportunity arises.

### **Data Availability Programmes**

A substantial amount of company exploration data was made available through these programmes in 2006, both online ([ww.minex.ie](http://ww.minex.ie)) and on CD/DVD-ROM. Online data is now available for over 40% of the area covered by prospecting licences.

#### **Data from Current Licences**

All data over six years old from current prospecting licences are released under this programme. Nine CD/DVDs containing hundreds of exploration company reports dating back to the early 1960s, have been released since 2002. The most recent DVD was released in March 2005 and relates to ten Prospecting Licence Areas located in the southern part of the Rathdowney Trend in which the Galmoy and Lisheen zinc-lead mines are located. In addition, companies who availed of the 2002-2004 exploration expenditure concessions and were seeking joint venture partners have also had their data released. As a result, information on over 150 areas has been released

#### **Data for Surrendered Licences**

Exploration data from surrendered licences are released four times a year, when the relevant quarterly Prospecting Licence Competition for newly available ground takes place. In the past year, data for 31 licence areas has been made publicly available.

#### **Airborne Geophysics Data Release**

Low level high resolution geophysical surveys have been flown over 59 areas by various companies under the EMD 'open skies' policy since 1995. Some 35% of the country, largely prospective Lower Carboniferous ground, has been covered. All data is lodged with EMD. Once the four-year confidentiality period has expired, these data are made progressively available to the public. The first survey was released in June 2001, and to date over 78% of the coverage has been made available **free** on CD. Each geophysics release includes digital databases, grids and maps.

## **Online availability of Company Data**

This programme is driven by a commitment to provide both industry and the general public with as much free information as possible regarding company activities, ground assessment for exploration, and newly available areas for competitive application. Thousands of company reports relating to more than 700 PL Areas have now been uploaded onto the [www.minex.ie](http://www.minex.ie) website. This figure represents more than 40% of the ground covered by PL Areas. All exploration data released prior to 2000 can be viewed, free of charge, at the offices of the Geological Survey of Ireland, in Dublin.

## **Digital Prospecting Licence Data**

Digital versions of the Prospecting Licence map are produced in February and November each year. These are provided free on request. All licence data are provided on CD in shapefile format, for use with the ESRI suite of GIS products. A free map viewer 'ArcExplorer' is bundled with the licence data. This enables clients without access to GIS desktop applications to display the licence data, and determine ground status. The area boundaries can also be downloaded off the [www.minex.ie](http://www.minex.ie) website.

## **Target Areas Programme**

This programme is intended to stimulate interest in specific areas of the country by providing focused information and added value to the ongoing data release programmes where appropriate.

## **Airborne Magnetic Interpretation**

Exploration and Mining Division (EMD) and PGW Europe Ltd. have collaborated to re-process and interpret recently released high-resolution airborne magnetic data. The collaboration has focused to date on three contiguous blocks located in the highly prospective Central Basin Area of Ireland. For each map, the following three 1:100,000 scale maps are now available, free of charge and in digital format:

- Provisional Geophysical Interpretation 1: Regional Basement Terranes
- Provisional Geophysical Interpretation 2: Structure and Lithology
- Pole-reduced Total Field Magnetics

EMD wishes to stress that all interpretation maps are preliminary and at this stage should be considered as works in progress. The maps have been made publicly available in response to a number of requests from exploration clients who wish to view the provisionally interpreted data. The finalized suite of maps, together with associated reports for each block, will be available from EMD on completion of the project. To obtain more information on how you can acquire the free airborne magnetic interpretation maps, please contact EMD (Tel: +353 1 678 2677).

## **Data on Gold In Ireland**

To increase the awareness of the gold potential of the country, a digital release of all known gold localities in a GIS format was re-issued in 2005. The free CD is a joint EMD-Geological Survey of Ireland product. The localities are described and also spatially located on a simplified geological map. The CD also includes a review of the potential for gold mineralization and a full bibliography. The gold spatial data are also accessible through the [www.minex.ie](http://www.minex.ie) website.

## Silvermines Target Area

To coincide with a number of Silvermines licences being made available in the November 2006 Competition, EMD released a compilation of Silvermines exploration data on CD-ROM. In common with previous 'Target Area' releases (Ballinalack Zn-Pb and Cregganbaun Au), this CD-ROM contains pertinent GIS data (e.g. geology, drillholes, PL Area boundaries, mining features, environmental constraint areas) plus a collection of relevant exploration reports and technical papers. Lead, silver, copper and zinc had been intermittently worked from vein deposits in the Silvermines district since the 9<sup>th</sup> century, prior to the 1963 discovery of two distinct, but genetically related Zn-Pb orebodies. These orebodies were worked until 1982 by Mogul of Ireland Ltd., producing a total of 10.78Mt of ore grading 7.36% Zn and 2.7% Pb. The Silvermines district is additionally host to a large stratiform barite deposit at Ballynoe, from which 5.13Mt of ore grading 90% BaSO<sub>4</sub> was continuously mined between 1963 and 1993.

## The MAPS Initiative

The MAPS (Minerals Administration Programme Support) Initiative ([www.minex.ie](http://www.minex.ie)) is a major e-Government project undertaken by the Department to encourage and facilitate exploration and mining in Ireland. The MAPS system currently delivers:

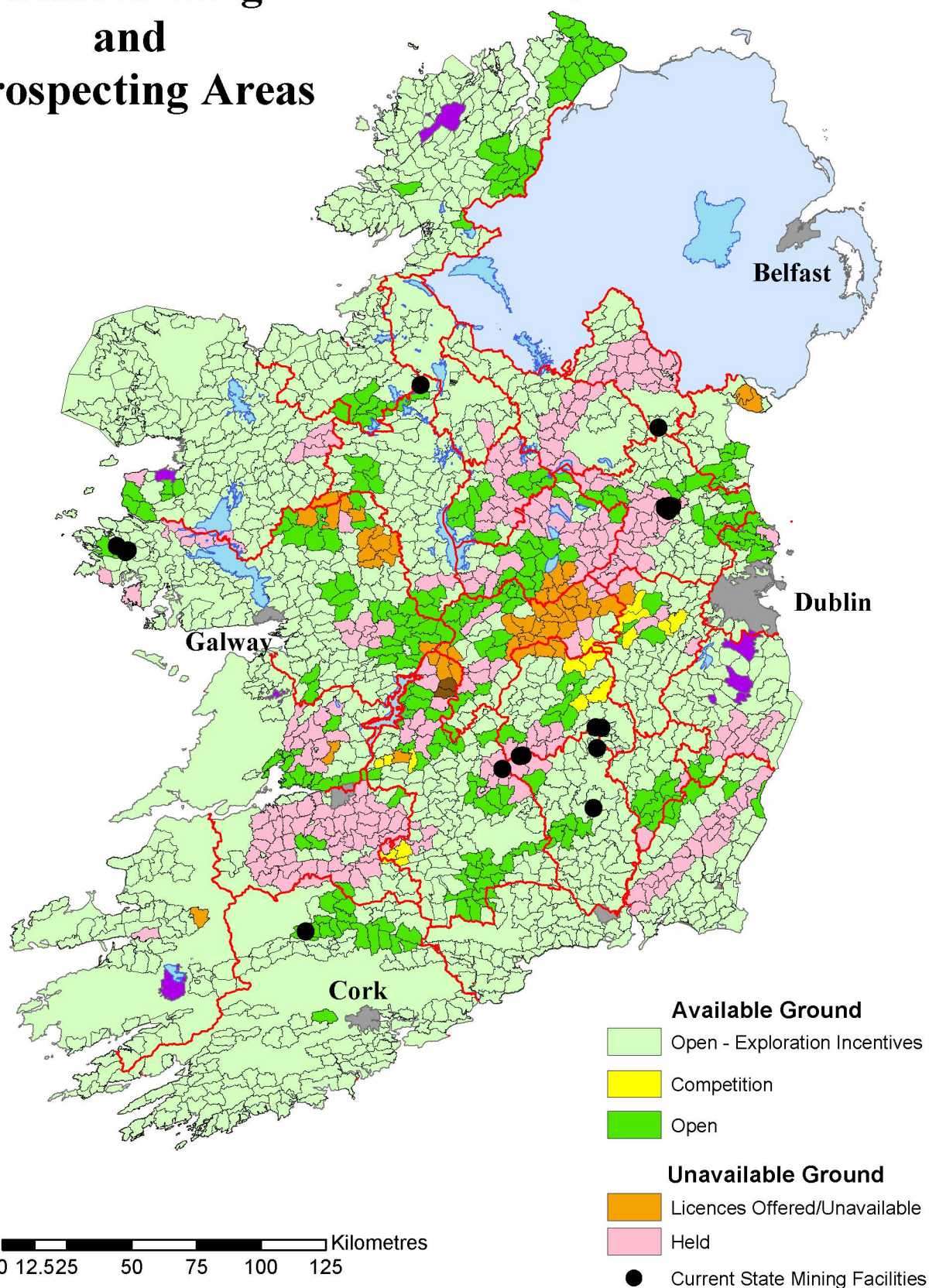
- An online facility that allows clients to assess the status of licences
- FREE online access for ground assessment purposes to all publicly available information held by EMD, including GIS data, exploration company reports and other archival material
- An up-to-date industry focused website providing clients with mineral potential information, regulatory data, industry news, the latest company and Ministerial press releases, reviews, EMD publications, etc.
- Improved efficiency of service to customers, through e-Enabled user-friendly systems.

Customers can also use "GEMS" (EMD's web-based GIS mapping tool), to visualize and query a variety of GIS layers pertinent to mineral exploration, including base maps, permit areas, geology, environmental constraint areas, forestry coverage, mineral deposits, historic and current mines, gold occurrences, airborne geophysics survey areas and boreholes. The GEMS map viewer also provides users with access to a significant repository of other documents that are of additional benefit in assessing exploration ground (e.g. company reports, borehole logs, mineral deposit summaries, environmental synopses of constraint areas). Although somewhat delayed, the remaining elements of MAPS, namely the full e-Business facilities for permitting and the back-office workflow system designed to deliver increase efficiency to customers, will be rolled out shortly.

## PDAC Convention, Toronto, March 2007

The 75th Annual Convention and Trade Show of the Prospectors and Developers Association of Canada (PDAC) will be held in Toronto from 4<sup>th</sup> to 7<sup>th</sup> March 2007. The Exploration and Mining Division will be taking its usual stand at the Trade Show (Booth 903), and will be exhibiting with the Geological Survey of Ireland and with colleagues from Northern Ireland (Department of Enterprise, Trade and Investment, and the Geological Survey of Northern Ireland), in a combined **Ireland** exhibit. The PDAC meeting is the biggest of its kind in the world, and in March 2006 the attendance figures reached an all-time high of 14,500.

# Current Status of State Mining and Prospecting Areas



**TOP TEN EXPLORATION COMPANIES RANKED BY  
PROSPECTING LICENCES HELD AT 31 DECEMBER 2006**

<b>COMPANY</b>	<b>PLS HELD</b>
Boliden Tara Mines Limited	84
Teck Cominco Limited	42
Conroy Diamonds and Gold Plc.	27
Minco Ireland Limited	25
Connemara Mining Company Limited	23
Aurum Mineral Resources Limited	22
Lundin Mining Exploration Limited (formerly Arcon Exploration Plc.)	20
Anglo American Lisheen Mining Limited (assigned from Amcorp Irl. Ltd.)	8
Central Mining Finance	7
Boliden Tara Mines Limited / Aurum Mineral Resources Limited	6
<b>TOTAL:</b>	<b>244</b>

**A further 54 licences are held by an additional 17 companies, i.e. a total of 26 companies hold 298 licences.**

## PART 1

### *12 State Mining Leases, 10 State Mining Licences and 2 State Mining Permissions granted under the Acts and current during the period 1 July to 31 December 2006*

(Except those marked \* which were granted under the Mines and Minerals Act, 1931 (No. 54))

### SUMMARY

SML NO.	HELD BY	COUNT Y	VALIDITY		PRESENT POSITION
			FROM	TO	
<b>State Mining Licences</b>					
1	Galmoy Mines Limited	Kilkenny	03.02.1995	02.02.2016	<b>Lead and Zinc</b> - In production
2	Boliden Tara Mines Limited	Meath	03.07.1998	31.08.2010	<b>Lead and Zinc</b> - In production
3	Boliden Tara Mines Limited	Meath	03.07.1998	31.08.2010	<b>Lead and Zinc</b> - In production
4	Boliden Tara Mines Limited	Meath	11.09.2000	31.08.2010	<b>Lead and Zinc</b> - In production
5	Boliden Tara Mines Limited	Meath	15.01.2004	31.08.2010	<b>Lead and Zinc</b> - In production
6	Galmoy Mines Limited	Kilkenny	29.08.2002	02.02.2016	<b>Lead and Zinc</b> - In production
8	Galmoy Mines Limited	Kilkenny	21.01.2005	02.02.2016	<b>Lead and Zinc</b> - In production
9	Galmoy Mines Limited	Kilkenny	28.08.2005	02.02.2016	<b>Lead and Zinc</b> - In production
10	Galmoy Mines Limited	Kilkenny	28.02.2005	02.02.2016	<b>Lead and Zinc</b> - In production
134	Ormonde Brick Limited.	Kilkenny	01.06.2004	31.05.2029	<b>Coal and Fireclay</b>
<b>State Mining Leases</b>					
17*	Joyce's Marble Quarries Limited	Galway	01.10.1933	30.09.2032	<b>Marble and other Minerals</b> In production
23*	Flemings Fireclays Limited	Laois	01.03.1935	29.02.2032	<b>Fireclay, Coal</b> - In production
30*	Connemara Marble Products Limited	Galway	01.11.1937	31.10.2034	<b>Marble</b> Currently producing
37	Flemings Fireclays Limited	Laois	14.11.1940	13.11.2039	<b>Fireclay, Coal and other Minerals</b> No production since 1996
79	Joyce's Marble Quarries Limited	Galway	01.12.1957	30.11.2056	<b>Marble and other Minerals</b> In production
100	Roadstone Provinces Limited	Kilkenny	01.01.1969	31.12.2008	<b>Dolomite, Dolomitic Limestone and other Minerals</b> - In production
116	Boliden Tara Mines Limited	Meath	01.09.1975	31.08.2010	<b>Zinc, lead and other Minerals</b> In production
137	Ormonde Brick Limited.	Kilkenny	31.01.1997	30.01.2012	<b>Coal and Fireclay</b> - In production
139	Irish Gypsum Limited	Monaghan	12.11.2002	11.11.2032	<b>Gypsum, Anhydrite and other Minerals</b> - In production
140	(1) Anglo American Lisheen Mining Limited (formerly Minorco Lisheen Mining Limited) (2) Killoran Lisheen Mining Limited (3) Lisheen Milling Co.	Tipperary	07.10.1997	06.10.2027	<b>Zinc, lead and other Minerals</b> In production
143	Eurostone Limited.	Cork	01.06.2004	31.12.2008	<b>Dolomite and Dolomitic Limestone</b>
144	Boliden Tara Mines Limited	Meath	01.07.2006	30.06.2021	<b>Zinc, lead and other Minerals</b> In production
<b>State Mining Permissions</b>					
63	Dan Morrissey Limited	Laois and Carlow	01.06.2006	31.05.2007	<b>Coal and Fireclay</b> - In production
64	Boliden Tara Mines Limited	Meath	01.07.2006	31.03.2007	<b>Zinc and lead</b> - In production

**Name and Address of Lessee:**            **Anglo American Lisheen Mining Limited**  
**Killoran Lisheen Mining Limited**  
**Lisheen Milling Co.**  
Killoran, Moyne, Thurles,  
County Tipperary

**Minerals:**                                    All minerals except gold

**Lands Concerned:**                    Derryville (part), Killoran (part), Ballyerk (part), Barnalisheen (part), County Tipperary (Lease No. 140)

**Area:**                                            188 hectares

**Period:**                                      30 years from 7 October 1997 (expires 6 October 2027)

**Consideration:**                        Dead Rent of €63,486.90 for the first year; €126,973.80 for the second year; €380,921.42 for each subsequent year until production ceases; and €25,394.76 for each year thereafter; with provision to index the Dead Rent at the end of every third year from the commencement date to take account of changes in money values. Royalties, into which the Dead Rent will merge, at the following rates:

1¾% of revenue for first three years of production; 3% of revenue for fourth and fifth years of production; and 4½% of revenue for sixth and every subsequent year of production.

**Name and Address of Licensee:**        **Boliden Tara Mines Limited**  
Knockumber House, Navan,  
County Meath

**Minerals:**                                      Lead, zinc and other minerals

**Lands Concerned:**                    Ardbraccan (part), Knockumber (part), County Meath  
(Licence No. 2)

**Area:**                                            35.61 hectares

**Period:**                                        3 July 1998 to 31 August 2010

**Consideration:**                            Once off payment of €190,460.71 in lieu of Royalties.

**Name and Address of Licensee:**        **Boliden Tara Mines Limited**

Knockumber House, Navan,  
County Meath

**Minerals:** Lead, zinc and other minerals  
**Lands Concerned:** Parts of the townlands of Whistlemount in County Meath  
(Licence No. 3)  
**Area:** 1.06 hectares or thereabouts  
**Period:** 3 July 1998 to 31 August 2010  
**Consideration:** Once off payment of €507,895.23 in lieu of royalties.

**Name and Address of Licensee:** **Boliden Tara Mines Limited**  
Knockumber House, Navan,  
County Meath

**Minerals:** Lead, zinc and other minerals  
**Lands Concerned:** Part of the townlands of Ardbraccan and Glebe, County Meath  
(Licence No. 4)  
**Area:** 39.36 hectares or thereabouts  
**Period:** 11 September 2000 to 31 August 2010  
**Consideration:** Once off payment of €126,973.80 in lieu of royalties.

**Name and Address of Licensee:** **Boliden Tara Mines Limited**  
Knockumber House, Navan,  
County Meath

**Minerals:** Lead, zinc and other minerals  
**Lands Concerned:** Part of the townlands of Ardbraccan and Boyerstown, County Meath  
(Licence No. 5)  
**Area:** 87.17 hectares or thereabouts  
**Period:** 15 January 2004 to 31 August 2010  
**Consideration:** Once off payment of €1,050,000.00 in lieu of royalties.

**Name and Address of Lessee:** **Boliden Tara Mines Limited**  
Knockumber House, Navan,

County Meath

**Minerals:** Lead, zinc and other minerals

**Lands Concerned:** Parts of the townlands of Whistlemount, Knockumber, Liscartan and other townlands in County Meath (Lease No. 116)

**Area:** 1,769 hectares or thereabouts

**Period:** 35 years from 1 September 1975 (expires 31 August 2010)

**Consideration:** Dead Rent of €12,697.38 per annum. Dead rent of €44,440.83 per annum in the event of stoppage of working the minerals.

**Name and Address of Lessee:** **Boliden Tara Mines Limited**  
Knockumber House, Navan,  
County Meath

**Minerals:** Lead and zinc

**Lands Concerned:** Part of the townland of Betaghstown in County Meath (Permission No. 64)

**Area:** 8.76 hectares or thereabouts

**Period:** 9 Months from 1 July 2006 (expires 31 March 2007)

**Consideration:** Once off payment of €25,000.00 and 2% of revenue in respect of all minerals extracted.

**Name and Address of Lessee:** **Boliden Tara Mines Limited**  
Knockumber House, Navan,  
County Meath

**Minerals:** Lead, zinc and other minerals

**Lands Concerned:** Parts of the townland of Nevinstown in County Meath (Lease No. 144)

**Area:** 49.3 hectares or thereabouts

**Period:** 15 years from 1 July 2006 (expires 30 June 2021)

**Consideration:** Once off payment of €600,000.00 in lieu of royalties.

**Name and Address of Lessee:** **Connemara Marble Products Limited**  
Moycullen,

County Galway

**Minerals:** Marble and all other minerals  
**Lands Concerned:** Cregg (part), Ballinahinch, County Galway (Lease No. 30)  
**Area:** 4 hectares or thereabouts  
**Period:** 97 years from 1 November 1937 (expires 31 October 2034)  
**Consideration:** Dead Rent of €25.39 per annum and Royalties into which Dead Rent will merge, at the rate of 2½% on all sales of marble raised and gotten.

**Name and Address of Permittee:** **Dan Morrissey (Ireland) Limited**  
Bennekerry,  
County Carlow

**Minerals:** Coal and fireclay.  
**Lands Concerned:** Rossmore (part) County Laois, Clogrenan (part) County Carlow (permission No. 63)  
**Area:** 0.147 square kilometres or thereabouts  
**Period:** 1 year from 1 June 2006 (expires 31 May 2007)  
**Consideration:** Dead Rent of €1,000 per annum and Royalties into which Dead Rent will merge, at the rate of 70 cent per tonne on fireclay and 5% of sales revenue (net of VAT) in respect of all coal extracted.

**Name and Address of Lessee:** **Eurostone Limited**  
Gouldshill, Mallow,  
County Cork

**Minerals:** Dolomite and dolomitic limestone.  
**Lands Concerned:** Subulter (part), Duhallow, County Cork (Lease No. 143)  
**Area:** 0.133 square kilometres or thereabouts  
**Period:** 4 years and 7 months from 1 June 2004 (expires 31 December 2008)  
**Consideration:** Dead Rent of €52 per annum and Royalties into which Dead Rent will merge, at the rate of 38 cent per tonne on all dolomite and dolomitic limestone raised and gotten.

**Name and Address of Lessee:** **Fleming's Fireclays Limited**

The Swan, Athy,  
County Kildare

**Minerals:** Coal, fireclay and other minerals (Lease No. 23)

**Lands Concerned:** Moyadd (part), Aghadreen (part), Knockacrin (part) and Slatt Lower, County Laois

**Area:** 384 hectares

**Period:** 97 years from 1 March 1935 (expires 29 February 2032)

**Consideration:** Dead Rent of €1.74 per annum and royalties, in which the Dead Rent will merge, at the following rates:

€0.0159 per metric tonne on coal, culm or carbonaceous matter; €0.0105 per metric tonne on fireclay raised.

**Name and Address of Lessee:** **Fleming's Fireclays Limited**  
The Swan, Athy,  
County Kildare

By Assignment

**Minerals:** Coal, fireclay and other minerals (Lease No. 37)

**Lands Concerned:** Slatt Lower (part) and Ballylehane Upper (part), County Laois

**Area:** 121.4 hectares

**Period:** 99 years from 14 November 1940 (expires 13 November 2039)

**Consideration:** Dead Rent of €1.74 per annum and royalties, in which the Dead Rent will merge, at the following rates:

€0.0159 per metric tonne on coal, culm or carbonaceous matter; €0.0105 per metric tonne on fireclay and 4% of the value of all other minerals.

**Name and Address of Licensee:** **Galmoy Mines Limited (formerly Arcon Mines Limited)**  
Galmoy,  
via Thurles,  
County Kilkenny

**Minerals:** Lead, zinc and other minerals

**Lands concerned:** Castletown (part), Garrylaun (part), Rathreagh (part), Whiteswall (part), County Kilkenny (Licence No. 1)

**Area:** 141 hectares or thereabouts

**Period:** 21 years from 3 February 1995 (expires 2 February 2016)

**Consideration:** Licence Fee of €3,486.90 per annum for each of the first two years of Licence; €126,973.80 per annum for the third year of Licence and each subsequent year until the working of the minerals has permanently ceased; and €25,394.76 per annum for each year thereafter with provision to index the Licence Fee at the end of every third year from the commencement date to take account of changes in money values. Royalties, in which the Licence Fee will merge, at the following rates:

1½% per annum of revenue for first three years of mine production; 2½% of revenue for fourth year of mine production; and 3% per annum of revenue for fifth and every subsequent year of mine production.

**Name and Address of Licensee:** **Galmoy Mines Limited (formerly Arcon Mines Limited)**  
Galmoy,  
via Thurles,  
County Kilkenny

**Minerals:** Lead, zinc and other minerals

**Lands concerned:** Rathreagh (part) (Licence No. 6)

**Area:** 26 hectares or thereabouts

**Period:** 13.5 years from 29 August 2002 (expires 2 February 2016)

**Consideration:** The Licence provides for an annual Licence Fee of €5,000 per annum subject to indexation in line with the C.P.I. Accordingly the Annual Fee increased to €5,590 in February 2004. Thereafter the Licence Fee shall be indexed at the end of every three-year period to account for changes in money values. Royalties, in which the Licence Fee will merge, at the following rate:

3% per annum of revenue for every year of mine production.

**Name and Address of Licensee:** **Galmoy Mines Limited (formerly Arcon Mines Limited)**  
Galmoy,  
via Thurles,  
County Kilkenny

**Minerals:** Lead, zinc and other minerals

**Lands concerned:** Rathreagh (part) (Licence No. 8)

**Area:** 12.9 hectares or thereabouts

**Period:** 11 years from 21 January 2005 (expires 2 February 2016)

**Consideration:** Licence Fee of €15,000 per annum for each year until the working of the minerals has permanently ceased. In February 2007 the Licence Fee shall be increased or decreased by the same proportion as the CPI has increased or decreased between February 2001 and February 2007. Thereafter the Licence Fee shall be indexed at the end of every three-year period to account for changes in money values. Royalties, in which the Licence Fee will merge, at the following rate:

1.25% of revenue per annum until 30 June 2006. 1.75% of revenue per annum thereafter until the minerals are worked out.

**Name and Address of Licensee:** **Galmoy Mines Limited (formerly Arcon Mines Limited)**  
Galmoy,  
via Thurles,  
County Kilkenny

**Minerals:** Lead, zinc and other minerals

**Lands concerned:** Castletown (part) (Licence No. 10)

**Area:** 109 hectares or thereabouts

**Period:** 11 years from 28 February 2005 (expires 2 February 2016)

**Consideration:** Licence Fee of €5,000.00 per annum for each year until the working of the minerals has permanently ceased. In February 2007 the Licence Fee shall be increased or decreased by the same proportion as the CPI has increased or decreased between February 2001 and February 2007. Thereafter the Licence Fee shall be indexed at the end of every three-year period to account for changes in money values. Royalties, in which the Licence Fee will merge, at the following rate:

1.25% of revenue per annum until 30 June 2006. 1.75% of revenue per annum thereafter until the minerals are worked out.

**Name and Address of Licensee:** **Galmoy Mines Limited (formerly Arcon Mines Limited)**  
Galmoy,  
via Thurles,  
County Kilkenny

**Minerals:** Lead, zinc and other minerals

**Lands concerned:** Rathreagh (part) (Licence No. 9)

**Area:** 33.0 hectares or thereabouts

**Period:** 10.5 years from 25 August 2005 (expires 2 February 2016)

**Consideration:** Licence Fee of €15,000.00 per annum for each year until the working of the minerals has permanently ceased. In February 2007 the Licence Fee shall be increased or decreased by the same proportion as the CPI has increased or decreased between February 2001 and February 2007. Thereafter the Licence Fee shall be indexed at the end of every three-year period to account for changes in money values. Royalties, in which the Licence Fee will merge, at the following rate:

1.25% of revenue per annum until 30 June 2006. 1.75% of revenue per annum thereafter until the minerals are worked out.

**Name and Address of Lessee:** **Irish Gypsum Limited**  
Unit 14, Park West Industrial Park,  
Dublin 12

**Minerals:** Gypsum, anhydrite and all other minerals

**Lands Concerned:** Ballycartlan, Derryleeg, Derrynaglah, Derrynascobe, Drumgoosat, Drummond (E.D. Enagh), Enagh, Knocknacran East and Knocknacran West, Co. Monaghan, and Cormey in Co. Cavan (Lease No. 139)

**Area:** 4.57 square kilometres

**Period:** 30 years from 12 November 2002 (expires 11 November 2032)

**Consideration:** Dead Rent of €29,387.08 per annum and royalties in which the Dead Rent will merge at the following rate:

€0.6343 per tonne on the minerals raised, gotten and taken away.

On 1 December 2005, the Dead Rent and royalties were increased by 12.5% to €33,060.46 per annum and €0.7136 per tonne in line with the C.P.I.. Every four years thereafter, the Dead Rent and royalties shall be altered in line with the C.P.I. to take account of changes in monetary values and price levels.

**Name and Address of Lessee:** **Joyce's Marble Quarries Limited**  
Lissoughter, Recess, Connemara,  
County Galway

By Assignment

**Minerals:** Marble and all other minerals

**Lands Concerned:** Barnanoraun (part), County Galway (Lease No. 17)  
**Area:** 24.65 hectares or thereabouts  
**Period:** 99 years from 1 October 1933 (expires 30 September 2032)  
**Consideration:** Dead Rent of €15.24 per annum and royalties, in which the Dead Rent will merge, at the following rate:  
€0.3174 per metric tonne on all marble raised, gotten and taken away and 4% of all other minerals.

**Name and Address of Lessee:** **Joyce's Marble Quarries Limited**  
Lissoughter, Recess, Connemara,  
County Galway  
By Assignment

**Minerals:** Marble and all other minerals  
**Lands Concerned:** Tievebreen (part), County Galway (Lease No. 79)  
**Area:** 16.19 hectares  
**Period:** 99 years from 1 December 1957 (expires 30 November 2056)  
**Consideration:** Dead Rent of €25.39 per annum and royalties, in which the Dead Rent will merge, at the following rates:  
€0.3123 per metric tonne on all marble raised, gotten and taken away, 4% on all other minerals.

**Name and Address of Licensee:** **Ormonde Brick Limited**  
Castlecomer,  
County Kilkenny

**Minerals:** Coal and fireclay  
**Lands Concerned:** Gorteen (part), County Kilkenny (Licence No. 134)  
**Area:** 13.25 hectares  
**Period:** 25 years from 01 June 2004 (expires 31 May 2029)  
**Consideration:** Dead Rent of €1,000 per annum and royalty, into which Dead Rent will merge at the following rates:  
€0.45 per tonne on fireclay raised; 2½% of sales revenue (net of VAT) on coal.

**Name and Address of Lessee:** **Ormonde Brick Limited**  
Castlecomer,  
County Kilkenny

**Minerals:** Coal and fireclay  
**Lands Concerned:** Coolbawn (part), County Kilkenny (Lease No. 137)  
**Area:** 18.4 hectares

**Period:** 15 years from 31 January 1997 (expires 30 January 2012)

**Consideration:** Dead Rent of €34.87 per annum and royalty, into which Dead Rent will merge at the following rates:

€0.3174 per tonne on fireclay raised; 2½% of sales revenue (net of VAT) on coal when sales exceed 1,000 tonnes per annum.

**Name and Address of Lessee:** **Roadstone Provinces Limited**  
Saggart,  
County Dublin

By Assignment

**Minerals:** Dolomite, dolomitic limestone and all other minerals

**Lands Concerned:** Dunbell Big (part), County Kilkenny (Lease No. 100)

**Area:** 256.97 hectares

**Period:** 40 years from 1 January 1969 (expires 31 December 2008)

**Consideration:** Dead Rent of €190.46 per annum and royalty, in which the Dead Rent will merge at the following rates:

€0.0312 per metric tonne on dolomite and dolomitic limestone raised, gotten and taken away and 4% of all other minerals.

## **PART 2**

### ***Minerals Prospecting Licences granted under the Acts and current during the period 1 July to 31 December 2006***

**Note:** The townlands referred to in the second column of the following tables are the key townlands in respect of each prospecting licence. However, in each case, neighbouring townlands (not specified in the Tables) are involved.

The full listing of townlands for any licence area can be found in the EMD's Exploration Website, which is currently under development. This website can be accessed by going to [www.emd.ie](http://www.emd.ie) and then clicking on the link "EMD launch Exploration Website".

## **RATES OF APPLICATION & CONSIDERATION FEES FOR MINERALS PROSPECTING LICENCES (PL)**

### **Application Fee**

There is a standard application fee of €190 per Prospecting Licence Area.

### **Consideration**

<b>Two-Year Period</b>	<b>Consideration Fee</b>
First	€750
Second	€875
Third	€1,500
Fourth and each subsequent two-year period	€2,500

Thus, the fee will be €2,500 per two-year period where a Prospecting Licence is renewed to any person who was the holder of the Prospecting Licence for 6 years or more.

### **Special Consideration as incentive for prospecting in under-explored areas**

A reduced consideration of €1,250 for an initial six-year term was introduced in conjunction with the May 1995 Competition for Minerals Prospecting Licences as a promotional incentive for areas which, in the opinion of the Minister, have been under-explored with regard to their mineral potential, namely,

- (a) open ground, i.e., areas that have never been licensed,
- and
- (b) open areas that have not been licensed for over four years.

**ANGLO AMERICAN LISHEEN MINING LIMITED**

THE LISHEEN MINE  
KILLORAN, MOYNE, THURLES,  
COUNTY TIPPERARY

AREA	TOWNLANDS	COUNTY	MINERALS	START	SURRENDERED
1652	BALLYCOLLA (BY ASSIGNMENT)	LAOIS	BASE METALS, SILVER & BARYTES	28/05/1987	
2218	BOLEY (BY ASSIGNMENT)	LAOIS	BASE METALS, SILVER & BARYTES	28/05/1987	
2258	CASTLELEINY (BY ASSIGNMENT)	TIPPERARY	BASE METALS, SILVER & BARYTES	28/05/1987	
2447	KILCOKE (BY ASSIGNMENT)	TIPPERARY	BASE METALS, SILVER & BARYTES	28/05/1987	
2448	MOYNEARD (BY ASSIGNMENT)	TIPPERARY	BASE METALS, SILVER & BARYTES	28/05/1987	
3262	DERRYVILLE (BY ASSIGNMENT)	TIPPERARY	BASE METALS, SILVER & BARYTES	28/05/1987	
3667	BALLYBODIN (BY ASSIGNMENT)	LAOIS	BASE METALS, BARYTES & SILVER	28/07/1991	
3688	GLEBE	LAOIS	BASE METALS, BARYTES & SILVER	09/01/1997	

**ASARCO EXPLORATION INC.**

C/O CSA GROUP  
UNIT 7 DUNDRUM BUSINESS PARK  
WINDY ARBOUR  
DUBLIN 14

AREA	TOWNLANDS	COUNTY	MINERALS	START	SURRENDERED
468	FARRAN	TIPPERARY/ LIMERICK	BASE METALS, SILVER & BARYTES	29/07/2002	23/10/2006
600	RATHANGAN (PART)	KILDARE	BASE METALS, SILVER & BARYTES	04/09/2000	23/10/2006
1608	CARRAGH	KILDARE	BASE METALS, SILVER & BARYTES	06/04/2001	23/10/2006
1624	CLONYHURK	OFFALY	BASE METALS, BARYTES, IRON & SILVER	24/02/2003	
1630	DREHID	KILDARE	BASE METALS, BARYTES & SILVER	14/08/1996	23/10/2006
1640	EMO PARK	LAOIS	BASE METALS, SILVER & BARYTES	31/10/2000	23/10/2006
2654	MONANOUR	TIPPERARY	BASE METALS, SILVER & BARYTES	29/07/2002	23/10/2006
3332	SALLINS	KILDARE	BASE METALS, SILVER & BARYTES	06/04/2001	23/10/2006
3552	BALLINGLANNA	TIPPERARY	BASE METALS, SILVER & BARYTES	29/07/2002	23/10/2006
3846	LULLYBEG	KILDARE	BASE METALS, BARYTES & SILVER	04/09/1996	23/10/2006
3853	PORTNAHINCH	LAOIS	BASE METALS, SILVER & BARYTES	31/10/2000	23/10/2006
3854	CUSHINA	OFFALY	BASE METALS, SILVER & BARYTES	31/10/2000	23/10/2006
3920	WALSHISLAN	OFFALY	BASE METALS, BARYTES, IRON & SILVER	24/02/2003	

**AURUM MINERAL RESOURCES LIMITED**

AURUM HOUSE  
40 / 41 WATERGATE STREET  
NAVAN  
COUNTY MEATH

AREA	TOWNLANDS	COUNTY	MINERALS	START	SURRENDERED
350	DONOHILL LANDS	TIPPERARY	BASE METALS BARYTES SILVER & GOLD	27/05/2004	
449	GRANGE	LIMERICK	GOLD	27/05/2004	
450	KILDROMIN	LIMERICK	GOLD	27/05/2004	
2295	LEE	GALWAY	SILVER & GOLD	30/06/2004	
2396	OLDHEAD	MAYO	SILVER & GOLD	13/01/2003	
2638	FEDAMORE	LIMERICK	GOLD	27/05/2004	
2645	KILBRIDE	MAYO	SILVER & GOLD	30/06/2004	
2646	SHANAFARAGHAUN	GALWAY	SILVER & GOLD	30/06/2004	
2647	CANGARROW	GALWAY	SILVER & GOLD	30/06/2004	
2839	EMLY	LIMERICK / TIPPERARY	BASE METALS BARYTES SILVER & GOLD	27/05/2004	
2927	KILPEACON	LIMERICK	GOLD	27/05/2004	
3169	MAUM EAST	GALWAY	SILVER & GOLD	30/06/2004	
3170	CAHERGAL	GALWAY	SILVER & GOLD	30/06/2004	
3267	CREAN	LIMERICK	BASE METALS BARYTES SILVER & GOLD	28/06/2006	
3367	MEANUS	LIMERICK	GOLD	27/05/2004	
3422	CLOONBUR	GALWAY	SILVER & GOLD	30/06/2004	
3467	CONG SOUTH	MAYO	SILVER & GOLD	30/06/2004	
3647	CLONBRICK	LIMERICK / TIPPERARY	GOLD	27/05/2004	
3809	SPAIGHTSPARK	CLARE	BASE METALS BARYTES SILVER & GOLD	28/06/2006	
3810	MAGHERA	CLARE	BASE METALS BARYTES SILVER & GOLD	28/06/2006	

**AURUM MINERAL RESOURCES LIMITED (Continued)**

AURUM HOUSE  
40 / 41 WATERGATE STREET  
NAVAN  
COUNTY MEATH

AREA	TOWNLANDS	COUNTY	MINERALS	START	SURRENDERED
3824	ROCKBARTON	LIMERICK	BASE METALS BARYTES SILVER & GOLD	27/05/2004	
3924	BALLYGODOON	LIMERICK/ TIPPERARY	BASE METALS BARYTES SILVER & GOLD	27/05/2004	

**AURUM MINERAL RESOURCES LIMITED / ORMONDE MINING PLC**

AURUM HOUSE  
40 / 41 WATERGATE STREET  
NAVAN  
COUNTY MEATH

AREA	TOWNLANDS	COUNTY	MINERALS	START	SURRENDERED
1473	TINAHELY	WICKLOW	BASE METALS BARYTES SILVER & GOLD TUNGSTEN LITHIUM MOLYBDENUM & PLATINUM GROUP MINERALS	28/06/2006	
1715	BALLINGLEN	WICKLOW	BASE METALS BARYTES SILVER & GOLD TUNGSTEN LITHIUM MOLYBDENUM & PLATINUM GROUP MINERALS	28/06/2006	
1716	SHEILSTOWN	WICKLOW	BASE METALS BARYTES SILVER & GOLD TUNGSTEN LITHIUM MOLYBDENUM & PLATINUM GROUP MINERALS	28/06/2006	
3029	CRAFFIELD	WICKLOW	BASE METALS BARYTES SILVER & GOLD TUNGSTEN LITHIUM MOLYBDENUM & PLATINUM GROUP MINERALS	28/06/2006	
3030	BALLINACOR	WICKLOW	BASE METALS BARYTES SILVER & GOLD TUNGSTEN LITHIUM MOLYBDENUM & PLATINUM GROUP MINERALS	28/06/2006	

**BELMORE RESOURCES PLC.**

103 RATHFARNHAM WOOD  
DUBLIN 14

AREA	TOWNLANDS	COUNTY	MINERALS	START	SURRENDERED
3642	RATHLAHEEN NORTH	CLARE	BASE METALS, BARYTES, SILVER, & GOLD	30/09/2005	
3679	BALLYHANNON NORTH	CLARE	BASE METALS, BARYTES, SILVER & GOLD	19/12/2005	

**BHP WORLD EXPLORATION INC.**

SUITE 2300-1111 WEST GEORGIA STREET  
VANCOUVER, BRITISH COLUMBIA  
CANADA V6E 4M3

AREA	TOWNLANDS	COUNTY	MINERALS	START	SURRENDERED
1500	RATHCORE	MEATH	BASE METALS, BARYTES, SILVER, GOLD & IRON	14/12/1995	

**BOLIDEN TARA MINES LIMITED**

KNOCKUMBER HOUSE  
KNOCKUMBER ROAD  
NAVAN, COUNTY MEATH

AREA	TOWNLANDS	COUNTY	MINERALS	START	SURRENDERED
786	ADARE (BY ASSIGNMENT)	LIMERICK	BASE METALS, BARYTES, SILVER & GOLD	01/05/1991	
1102	NEWFOREST	GALWAY	BASE METALS, BARYTES, GOLD & SILVER	01/11/2006	
1183	GREATISLAND	WEXFORD	BASE METALS, BARYTES, GOLD & SILVER	10/03/2000	
1185	NEWBAWN	WEXFORD	BASE METALS, BARYTES, GOLD & SILVER	10/03/2000	
1188	SCULLABOGE	WEXFORD	BASE METALS, BARYTES, GOLD & SILVER	10/03/2000	
1190	CLONROCHE	WEXFORD	BASE METALS, BARYTES, GOLD & SILVER	10/03/2000	
1191	TEMPLESCOBY	WEXFORD	BASE METALS, BARYTES, GOLD & SILVER	10/03/2000	
1192	KILPIERCE	WEXFORD	BASE METALS, BARYTES, GOLD & SILVER	10/03/2000	
1193	ENNISCORTHY (PART)	WEXFORD	BASE METALS, BARYTES, GOLD & SILVER	10/03/2000	
1194	BALLYSIMON	WEXFORD	BASE METALS, BARYTES, GOLD & SILVER	10/03/2000	
1196	FERNS	WEXFORD	BASE METALS, BARYTES, GOLD & SILVER	10/03/2000	
1197	BALLYTRACEY	WEXFORD	BASE METALS, BARYTES, GOLD & SILVER	10/03/2000	
1198	CAMOLIN	WEXFORD	BASE METALS, BARYTES, GOLD & SILVER	10/03/2000	

**BOLIDEN TARA MINES LIMITED (Continued)**

KNOCKUMBER HOUSE  
KNOCKUMBER ROAD  
NAVAN, COUNTY MEATH

AREA	TOWNLANDS	COUNTY	MINERALS	START	SURRENDERED
1199	BALLOUGHTER	WEXFORD	BASE METALS, BARYTES, GOLD, & SILVER	10/03/2000	
1200	GOREYHILL	WEXFORD	BASE METALS, BARYTES, GOLD & SILVER	10/03/2000	
1201	RAHEENAGURREN EAST	WEXFORD	BASE METALS, BARYTES, GOLD & SILVER	10/03/2000	
1302	ENNISCOUSH	LIMERICK	BASE METALS, BARYTES, SILVER & GOLD	28/06/1994	
1322	COOLRONAN	MEATH	BASE METALS, BARYTES, SILVER & GOLD	16/12/2005	
1323	MOYRATH	MEATH	BASE METALS, BARYTES, SILVER & GOLD	16/12/2005	
1324	KILBRIDE	MEATH	BASE METALS, BARYTES & SILVER	16/11/1995	
1325	BELLEWSTOWN	MEATH	BASE METALS, BARYTES, SILVER & GOLD	16/12/2005	
1339	BALLIVOR	MEATH	BASE METALS, BARYTES, SILVER & GOLD	16/12/2005	
1343	BALLINEGAR	OFFALY	BASE METALS, BARYTES, SILVER & GOLD	01/11/2006	
1380R	ARDBRACCAN (PART) (BY ASSIGNMENT)	MEATH	BASE METALS, BARYTES, GOLD & SILVER	31/12/1970	
1489R	DUNMOE (BY ASSIGNMENT)	MEATH	BASE METALS, BARYTES, GOLD & SILVER	26/10/1970	
1583	NEWPARK (BY ASSIGNMENT)	LIMERICK	BASE METALS, BARYTES, SILVER & GOLD	01/05/1991	

**BOLIDEN TARA MINES LIMITED (Continued)**

KNOCKUMBER HOUSE  
KNOCKUMBER ROAD  
NAVAN, COUNTY MEATH

AREA	TOWNLANDS	COUNTY	MINERALS	START	SURRENDERED
1661R	LISCARTON (PART) (BY ASSIGNMENT)	MEATH	BASE METALS, BARYTES, GOLD & SILVER	31/12/1971	
1680	MOUNTDELVIN	ROSCOMMON	BASE METALS, BARYTES, SILVER & GOLD	13/11/2006	
1813	INCH	WEXFORD	BASE METALS, BARYTES, GOLD & SILVER	10/03/2000	
1948	KNOCKFENORA	LIMERICK	BASE METALS, BARYTES, GOLD & SILVER	11/07/2002	
1949	KILMALLOCK	LIMERICK	BASE METALS, BARYTES, SILVER & GOLD	27/05/1987	
2520	LISCUILL	GALWAY	BASE METALS, BARYTES, SILVER & GOLD	01/11/2006	
2522	GEASHILL	OFFALY	BASE METALS, BARYTES, SILVER & GOLD	01/11/2006	
2537	ESKER MORE	OFFALY	BASE METALS, BARYTES, SILVER & GOLD	01/11/2006	
2538	EDENDERRY	OFFALY	BASE METALS, BARYTES, SILVER & GOLD	01/11/2006	
2560	GARRYCASTLE	OFFALY	BASE METALS, BARYTES, SILVER & GOLD	01/11/2006	
2568	ANNAGH	TIPPERARY	BASE METALS, BARYTES, SILVER & GOLD	01/11/2006	
2700	BALLYGAR	GALWAY	BASE METALS, BARYTES, SILVER & GOLD	01/11/2006	
2702	KILLEIGH	OFFALY	BASE METALS, BARYTES, SILVER & GOLD	01/11/2006	

**BOLIDEN TARA MINES LIMITED (Continued)**

KNOCKUMBER HOUSE  
KNOCKUMBER ROAD  
NAVAN, COUNTY MEATH

AREA	TOWNLANDS	COUNTY	MINERALS	START	SURRENDERED
2747	DRUMMOND	LAOIS	BASE METALS, BARYTES, SILVER & GOLD	01/11/2006	
2748	QUARRYMOUNT	LAOIS	BASE METALS, BARYTES, SILVER & GOLD	01/11/2006	
2781	DERRYCOOLY	OFFALY	BASE METALS, BARYTES, SILVER & GOLD	01/11/2006	
2782	MUCKLAGH	OFFALY	BASE METALS, BARYTES, SILVER & GOLD	01/11/2006	
2861	RATHROBIN	OFFALY	BASE METALS, BARYTES, SILVER & GOLD	01/11/2006	
2887	CASTLEGAR	GALWAY	BASE METALS, BARYTES, SILVER & GOLD	01/11/2006	
3147	CLONASLEE	ROSCOMMON	BASE METALS, BARYTES, SILVER & GOLD	13/11/2006	
3249	MOUNTCOOTE	LIMERICK	BASE METALS, BARYTES, SILVER & GOLD	27/05/1987	
3264	DRANAGH	WEXFORD	BASE METALS, BARYTES, GOLD & SILVER	10/03/2000	
3266	MOUNTPLEASANT	OFFALY	BASE METALS, BARYTES, GOLD & SILVER	01/11/2006	
3324	BALLYHEALY	WESTMEATH	BASE METALS, BARYTES, SILVER & GOLD	16/12/2005	
3346	BALLYBOY	MEATH	BASE METALS, BARYTES, SILVER & GOLD	16/12/2005	
3364	BALLINALEE OR SAINT JOHNSTOWN	LONGFORD	BASE METALS, BARYTES, GOLD & SILVER	19/05/1988	

**BOLIDEN TARA MINES LIMITED (Continued)**  
KNOCKUMBER HOUSE

KNOCKUMBER ROAD  
NAVAN, COUNTY MEATH

AREA	TOWNLANDS	COUNTY	MINERALS	START	SURRENDERED
3368	TORYHILL	LIMERICK	BASE METALS, BARYTES & SILVER	27/04/1988	
3369	CROOM	LIMERICK	BASE METALS, BARYTES & SILVER	27/04/1988	
3373	BARFORDSTOWN	MEATH	BASE METALS, BARYTES & SILVER	01/03/1993	
3429	NEWGROVE	GALWAY	BASE METALS, BARYTES, GOLD & SILVER	01/11/2006	
3432	GORTEEN	OFFALY	BASE METALS, BARYTES, GOLD & SILVER	01/11/2006	
3463	SALTMILLS (E.D. BALLYHACK)	WEXFORD	BASE METALS, BARYTES, GOLD & SILVER	10/03/2000	
3464	NASH	WEXFORD	BASE METALS, BARYTES, GOLD & SILVER	10/03/2000	
3465	ROCHESTOWN	WEXFORD	BASE METALS, BARYTES, GOLD & SILVER	10/03/2000	
3466	TEMPLESHELIN	WEXFORD	BASE METALS, BARYTES, GOLD & SILVER	10/03/2000	
3470	KINNAKINELLY	GALWAY	BASE METALS, BARYTES, GOLD & SILVER	13/11/2006	
3471	KILDAREE	GALWAY	BASE METALS, BARYTES, GOLD & SILVER	13/11/2006	
3475	NEWTOWN	OFFALY	BASE METALS, BARYTES, GOLD & SILVER	01/11/2006	
3488	WOLFESBURGESS WEST (BY ASSIGNMENT)	LIMERICK	BASE METALS, BARYTES, SILVER & GOLD	02/05/1988	

**BOLIDEN TARA MINES LIMITED (Continued)**

KNOCKUMBER HOUSE  
KNOCKUMBER ROAD

NAVAN, COUNTY MEATH

AREA	TOWNLANDS	COUNTY	MINERALS	START	SURRENDERED
3489	RATHKEALE (BY ASSIGNMENT)	LIMERICK	BASE METALS, BARYTES, SILVER & GOLD	02/05/1988	
3507	MEELICK	GALWAY	BASE METALS, BARYTES, GOLD & SILVER	01/11/2006	
3549	CARBURY	KILDARE	BASE METALS, BARYTES, GOLD & SILVER	01/11/2006	
3581	DOONMOON	LIMERICK	BASE METALS, BARYTES, GOLD & SILVER	29/07/2002	
3582	BOTTOMSTOWN	LIMERICK	BASE METALS, BARYTES, GOLD & SILVER	29/07/2002	
3622	BECTIVE	MEATH	BASE METALS, BARYTES, SILVER & GOLD	16/12/2005	
3637	POLLYNOON	GALWAY & ROSCOMMON	BASE METALS, BARYTES, GOLD & SILVER	13/11/2006	
3638	ARCHERSTOWN	WESTMEATH	BASE METALS, BARYTES, SILVER & GOLD	16/12/2005	
3742	NEWBRIDGE	GALWAY	BASE METALS, BARYTES, GOLD & SILVER	01/11/2006	
3757	CULTIAFADDA	GALWAY	BASE METALS, BARYTES, GOLD & SILVER	13/11/2006	
3822	ADAMSTOWN	WEXFORD	BASE METALS, BARYTES, GOLD & SILVER	10/03/2000	
3851	NUGENTSTOWN	MEATH	BASE METALS, BARYTES & SILVER	30/04/2001	
3852	MARTINSTOWN	MEATH	BASE METALS, BARYTES, SILVER & GOLD	16/12/2005	

**BOLIDEN TARA MINES LIMITED (Continued)**

KNOCKUMBER HOUSE  
KNOCKUMBER ROAD  
NAVAN, COUNTY MEATH

AREA	TOWNLANDS	COUNTY	MINERALS	START	SURRENDERED
3867	FAIRFIELD	GALWAY	BASE METALS, BARYTES, GOLD & SILVER	01/11/2006	
3868	KILCRUTTIN	OFFALY	BASE METALS, BARYTES, GOLD & SILVER	01/11/2006	
3912	RATHALDRON	MEATH	BASE METALS, BARYTES, & SILVER	19/04/2002	
3923	ATTYFLIN	LIMERICK	BASE METALS, BARYTES, SILVER & GOLD	27/05/2004	
3932	RICKARDSTOWN	WESTMEATH	BASE METALS, BARYTES, SILVER & GOLD	16/12/2005	
3942	CROGHANHILL	OFFALY	BASE METALS, BARYTES, GOLD & SILVER	01/11/2006	

**BOLIDEN TARA MINES LIMITED / AURUM EXPLORATION LIMITED**

KNOCKUMBER HOUSE  
KNOCKUMBER ROAD  
NAVAN,  
COUNTY MEATH

AURUM HOUSE  
40 / 41 WATERGATE STREET  
NAVAN,  
COUNTY MEATH

AREA	TOWNLANDS	COUNTY	MINERALS	START	SURRENDERED
1586	DALYSTOWN	LONGFORD	BASE METALS, BARYTES, SILVER & GOLD	30/06/2004	
1675	CLOONE	LEITRIM	BASE METALS, BARYTES, SILVER & GOLD	30/06/2004	
3363	DRUMLISH	LONGFORD	BASE METALS, BARYTES, SILVER & GOLD	30/06/2004	
3628	KILTYCREEVAGH	LONGFORD	BASE METALS, BARYTES, SILVER & GOLD	30/06/2004	
3629	ANNAGH	LONGFORD	BASE METALS, BARYTES, SILVER & GOLD	30/06/2004	
3630	CORNADRUNG	LONGFORD	BASE METALS, BARYTES, SILVER & GOLD	30/06/2004	

**BROWN GARY ROBERT**

547 WEST 23<sup>RD</sup> STREET  
NORTH VANCOUVER, BRITISH COLUMBIA  
CANADA V7M 2C1

AREA	TOWNLANDS	COUNTY	MINERALS	START	SURRENDERED
930	MURVEY	GALWAY	BASE METALS & SILVER	25/09/2006	
934	CARNA	GALWAY	BASE METALS & SILVER	31/12/2005	

**CENTRAL MINING FINANCE**

52 GROSVENOR GARDENS  
LONDON SW1W 0AU  
ENGLAND

AREA	TOWNLANDS	COUNTY	MINERALS	START	SURRENDERED
2895	KILGORY	CLARE	BASE METALS, BARYTES & SILVER	01/03/1993	
3508	SIXMILEBRIDGE	CLARE	BASE METALS, SILVER, BARYTES, CALCITE & FLUORITE	16/11/1998	
3643	CANT	CLARE	BASE METALS, SILVER & BARYTES	25/05/1999	
3787	MAGHERA	CLARE	BASE METALS, BARYTES & SILVER	08/06/1994	
3788	BALLYRAGGET	CLARE	BASE METALS, BARYTES & SILVER CALCITE & FLUORITE	08/06/1994 08/06/1995	
3789	DERRYMORE WEST	CLARE	BASE METALS, BARYTES & SILVER	08/06/1994	
3863	CAPPANAPEASTA	CLARE	BASE METALS, BARYTES, SILVER, CALCITE & FLUORITE	21/05/1997	

**CLARE CALCITE LIMITED**

BLOCK 4B, UNIT 5  
BLANCHARDSTOWN CORPORATE BUSINESS PARK  
DUBLIN 15

AREA	TOWNLANDS	COUNTY	MINERALS	START	SURRENDERED
3679	BALLYHANNAN	CLARE	CALCITE	27/10/1991	

**CONNEMARA MINING CO. LIMITED**

162 CLONTARF ROAD  
DUBLIN 3

AREA	TOWNLANDS	COUNTY	MINERALS	START	SURRENDERED
449	GRANGE	LIMERICK	BASE METALS, BARYTES, SILVER	31/01/2005	
450	KILDROMIN	LIMERICK	BASE METALS, BARYTES, SILVER	31/01/2005	
1051	MOUNTNUGENT	CAVAN	BASE METALS, BARYTES, SILVER, GOLD & PLATINUM GROUP MINERALS	28/01/2005	
1053	OLDCASTLE	MEATH	BASE METALS, BARYTES, SILVER, GOLD & PLATINUM GROUP MINERALS	28/01/2005	
1303	ARDDRINE	LIMERICK	BASE METALS, BARYTES, SILVER, GOLD & PLATINUM GROUP MINERALS	13/04/2005	
1940	LYRAGH	CORK	BASE METALS, BARYTES, SILVER, GOLD & PLATINUM GROUP MINERALS	13/04/2005	
1942	CLONCAGH	LIMERICK	BASE METALS, BARYTES, SILVER, GOLD & PLATINUM GROUP MINERALS	13/04/2005	
1943	AHAVEHEEN	LIMERICK	BASE METALS, BARYTES, SILVER, GOLD & PLATINUM GROUP MINERALS	13/04/2005	
1946	CAPPANIHANE	LIMERICK	BASE METALS, BARYTES, SILVER, GOLD & PLATINUM GROUP MINERALS	13/04/2005	

DUBLIN 3

AREA	TOWNLANDS	COUNTY	MINERALS	START	SURRENDERED
1947	GARRYFINE	LIMERICK	BASE METALS, BARYTES, SILVER, GOLD & PLATINUM GROUP MINERALS	13/04/2005	
1991	ROSS	MEATH	BASE METALS, BARYTES, SILVER, GOLD & PLATINUM GROUP MINERALS	28/01/2005	
2029	CASTLEMAINE	KERRY	BASE METALS, BARYTES, SILVER, GOLD & PLATINUM GROUP MINERALS	31/01/2005	
2531	WONDERHILL	LIMERICK	BASE METALS, BARYTES, SILVER, GOLD & PLATINUM GROUP MINERALS	28/04/2006	
2594	AHAWILK	LIMERICK	BASE METALS, BARYTES, SILVER, GOLD & PLATINUM GROUP MINERALS	13/04/2005	
2638	FEDAMORE	LIMERICK	BASE METALS, BARYTES, SILVER & PLATINUM GROUP MINERALS	31/01/2005	
2845	REENS EAST	LIMERICK	BASE METALS, BARYTES, SILVER, GOLD & PLATINUM GROUP MINERALS	13/04/2005	
2927	KILPEACON	LIMERICK	BASE METALS, BARYTES, SILVER & PLATINUM GROUP MINERALS	31/01/2005	
3367	MEANUS	LIMERICK	BASE METALS, BARYTES, SILVER & PLATINUM GROUP MINERALS	31/01/2005	

**CONNEMARA MINING CO. LIMITED (Continued)**

162 CLONTARF ROAD  
DUBLIN 3

AREA	TOWNLANDS	COUNTY	MINERALS	START	SURRENDERED
3650	ARRANAGH	LIMERICK	BASE METALS, BARYTES, SILVER, GOLD & PLATINUM GROUP MINERALS	13/04/2005	
3651	BALLYDONNELL	LIMERICK	BASE METALS, BARYTES, SILVER, GOLD & PLATINUM GROUP MINERALS	13/04/2005	
3777	PUNCHESTOWN LITTLE	KILDARE	BASE METALS, BARYTES, SILVER & GOLD	17/04/2006	
3925	BOOLIES	MEATH	BASE METALS, BARYTES, SILVER, GOLD & PLATINUM GROUP MINERALS	28/01/2005	
3926	LOUGHCREW	MEATH	BASE METALS, BARYTES, SILVER, GOLD & PLATINUM GROUP MINERALS	28/01/2005	

10 UPPER PEMBROKE STREET  
DUBLIN 2

AREA	TOWNLANDS	COUNTY	MINERALS	START	SURRENDERED
1356	MULLYASH	MONAGHAN	BASE METALS, ANTIMONY, BARYTES, SILVER & GOLD	23/01/1998	
1357	TOMOGROW	MONAGHAN	BASE METALS, ANTIMONY, BARYTES, SILVER & GOLD	23/01/1998	
1870	TASSAN	MONAGHAN	BASE METALS, SILVER, GOLD & BARYTES	10/04/1997	
2140	TONAGHBANE	CAVAN	BASE METALS, BARYTES, GOLD & SILVER	27/09/2000	
2193	GRIG	MONAGHAN	BASE METALS, ANTIMONY, BARYTES, SILVER & GOLD	23/01/1998	
2194	TULLYBUCK	MONAGHAN	BASE METALS, SILVER, GOLD & BARYTES	11/07/1996	
2254	FADOO	MONAGHAN	BASE METALS, ANTIMONY, BARYTES, SILVER & GOLD	23/01/1998	
2683	LECK	MONAGHAN	BASE METALS, SILVER, GOLD & BARYTES	15/07/1996	
2827	BALLANANAGH	CAVAN	BASE METALS, BARYTES, GOLD & SILVER	27/09/2000	
3027	LISDUFF	MONAGHAN	BASE METALS, ANTIMONY, BARYTES, SILVER & GOLD	20/08/1998	
3028	KNOCKNAMADDY	MONAGHAN	BASE METALS, SILVER, GOLD & BARYTES	15/07/1996	
3065	AGHABOG	MONAGHAN	BASE METALS, ANTIMONY, BARYTES, SILVER & GOLD	20/08/1998	

**CONROY DIAMONDS AND GOLD PLC. (Continued)**

10 UPPER PEMBROKE STREET  
DUBLIN 2

AREA	TOWNLANDS	COUNTY	MINERALS	START	SURRENDERED
3066	CORRASKEA	MONAGHAN	BASE METALS, ANTIMONY, BARYTES, SILVER & GOLD	20/08/1998	
3068	AGHADRUMKEEN (E.D. DAWSONGROVE)	MONAGHAN	BASE METALS, BARYTES, GOLD & SILVER	27/09/2000	
3130	CRUMLIN	CAVAN	BASE METALS, SILVER, GOLD & BARYTES	27/11/1996	
3131	LARAH	CAVAN	BASE METALS, BARYTES, GOLD & SILVER	27/09/2000	
3270	CROSSDOWNEY	CAVAN	BASE METALS, BARYTES, GOLD & SILVER	27/09/2000	
3400	DRUMHEEL	CAVAN	BASE METALS, SILVER, GOLD & BARYTES	27/11/1996	
3414	AGHALOORY	CAVAN	BASE METALS, BARYTES, GOLD & SILVER	27/09/2000	
3469	DRUM	MONAGHAN	BASE METALS, BARYTES, GOLD & SILVER	27/09/2000	
3526	GROUSEHALL	CAVAN	BASE METALS, BARYTES, GOLD & SILVER	27/09/2000	
3562	OLDTOWN	CAVAN	BASE METALS, BARYTES, GOLD & SILVER	27/09/2000	
3563	ARDAMAGH	CAVAN	BASE METALS, BARYTES, GOLD & SILVER	27/09/2000	
3564	TULLYALT	CAVAN	BASE METALS, BARYTES, GOLD & SILVER	27/09/2000	
3869	AGHNAMULLEN	MONAGHAN	BASE METALS, ANTIMONY, BARYTES, SILVER & GOLD	20/08/1998	

**CONROY DIAMONDS AND GOLD PLC. (Continued)**

10 UPPER PEMBROKE STREET  
DUBLIN 2

AREA	TOWNLANDS	COUNTY	MINERALS	START	SURRENDERED
3870	LACKAFIN	MONAGHAN	BASE METALS, ANTIMONY, BARYTES, SILVER & GOLD	20/08/1998	
3871	TOSSY	MONAGHAN	BASE METALS, ANTIMONY, BARYTES, SILVER & GOLD	20/08/1998	

**DAN MORRISSEY (IRELAND) LIMITED,**

BENNEKERRY HOUSE  
COUNTY CARLOW

AREA	TOWNLANDS	COUNTY	MINERALS	START	SURRENDERED
3891	ROSSMORE (PART)	LAOIS	COAL & FIRECLAY	27/09/1999	
3931	ROSSMORE	CARLOW/ LAOIS	COAL & FIRECLAY	27/04/2005	

**FRACTORE PTY. LIMITED**

11 FRENCH STREET  
CAMBERWELL  
VICTORIA 3124  
AUSTRALIA

AREA	TOWNLANDS	COUNTY	MINERALS	START	SURRENDERED
3782	CLONPET	TIPPERARY	BASE METALS, BARYTES & SILVER	11/07/2002	

**GANNON JOHN**  
FORTH BROWN,  
LAVALLY,  
TUAM,  
COUNTY GALWAY

AREA	TOWNLANDS	COUNTY	MINERALS	START	SURRENDERED
1362	PATCH	GALWAY	BASE METALS, BARYTES, SILVER & GOLD	09/08/2004	

**GLENCAR MINING PLC.**  
71 LOWER BAGGOT STREET  
DUBLIN 2

AREA	TOWNLANDS	COUNTY	MINERALS	START	SURRENDERED
2512	STRADBALLY	LAOIS	BASE METALS, BARYTES & SILVER	15/01/1992	23/10/2006
3662	CASHEL	LAOIS	BASE METALS, SILVER & BARYTES	21/08/1998	23/10/2006

**JADEBAY LIMITED**  
9 MARINE VIEW  
PHOENIX TERRACE  
BLACKROCK  
COUNTY DUBLIN

AREA	TOWNLANDS	COUNTY	MINERALS	START	SURRENDERED
3849	REDCROSS (BY ASSIGNMENT)	WICKLOW	BASE METALS, SILVER, GOLD & BARYTES	11/06/1998	
3850	TIGRONEY (BY ASSIGNMENT)	WICKLOW	BASE METALS, SILVER, GOLD & BARYTES	11/06/1998	

**KELLYS OF FANTANE**

FANTANE,  
BORRISOLEIGH,  
THURLES,  
COUNTY TIPPERARY

AREA	TOWNLANDS	COUNTY	MINERALS	START	SURRENDERED
3246	INCHIOURKE	TIPPERARY	DOLOMITE & DOLOMITIC LIMESTONE	28/02/2006	

**KENMARE RESOURCES PLC.**

CHATHAM HOUSE  
CHATHAM STREET  
DUBLIN 2

AREA	TOWNLANDS	COUNTY	MINERALS	START	SURRENDERED
1476	KILDAVIN	CARLOW	CAESIUM, TIN, LITHIUM, NIOBIUM, TANTALUM & TUNGSTEN	30/09/2002	30/09/2006
1597	SLIEVEDURDA	CARLOW	CAESIUM, TIN, LITHIUM, NIOBIUM, TANTALUM & TUNGSTEN	27/09/2002	

**LUNDIN MINING EXPLORATION LIMITED**

CASTLETOWN, GALMOY,  
CROSSPATRICK (VIA THURLES),  
COUNTY KILKENNY

AREA	TOWNLANDS	COUNTY	MINERALS	START	SURRENDERED
185	AGHNACRANAGH	LONGFORD	BASE METALS, BARYTES, SILVER & GOLD	17/04/2006	
186	CARRICKBOY	LONGFORD	BASE METALS, BARYTES & SILVER	31/05/2005	
480	STRADUFF	OFFALY	BASE METALS, SILVER & BARYTES	22/09/1994	
481	FARRANMACSHANE	OFFALY	BASE METALS, SILVER & BARYTES	22/09/1994	
582	TIRLICKEEN	LONGFORD	BASE METALS, SILVER & BARYTES	19/06/1991	
586R	KILCORAN (BY ASSIGNMENT)	LAOIS/ KILKENNY	BASE METALS, BARYTES, SILVER & GOLD	26/10/1981	
754	LISDUFF (BY ASSIGNMENT)	LAOIS	BASE METALS, SILVER & BARYTES	20/02/1987	
1604	BETAGHSTOWN	KILDARE	BASE METALS, BARYTES, SILVER, & GOLD	17/06/1998	
1607	ROBERTSTOWN	KILDARE	BASE METALS, BARYTES, SILVER, & GOLD	17/06/1998	
2579	CURRAHCHASE	LIMERICK	BASE METALS, BARYTES, SILVER & GOLD	17/04/2006	
2671R	COOLE	OFFALY	BASE METALS, SILVER & BARYTES	12/08/1998	
2696	CARRIGOGUNNEL	LIMERICK	BASE METALS, BARYTES, SILVER & GOLD	28/02/2006	
2835	KILDIMO	LIMERICK	BASE METALS, BARYTES, SILVER & GOLD	20/02/2006	

**LUNDIN MINING EXPLORATION LIMITED (Continued)**  
CASTLETOWN, GALMOY,  
CROSSPATRICK (VIA THURLES),  
COUNTY KILKENNY

AREA	TOWNLANDS	COUNTY	MINERALS	START	SURRENDERED
2840	KNOCKDERK	LIMERICK/ TIPPERARY	BASE METALS, SILVER, BARYTES & GOLD	19/12/1986	
2859	KYLE	OFFALY BARYTES,	BASE METALS, & SILVER	17/08/1981	
3245R	AGHADOEN (BY ASSIGNMENT)	KILKENNY	BASE METALS, SILVER, BARYTES & GOLD	19/12/1986	
3312	NEWTOWN (BY ASSIGNMENT)	LAOIS	BASE METALS, SILVER & BARYTES	04/08/1987	
3313	GLASHARE (BY ASSIGNMENT)	KILKENNY	BASE METALS, SILVER & BARYTES	04/08/1987	
3544	SHANAGOLDEN	LIMERICK	BASE METALS, BARYTES, SILVER & GOLD	28/02/2006	
3608	ASKEATON	LIMERICK	BASE METALS, BARYTES, SILVER & GOLD	17/04/2006	

162 CLONTARF ROAD  
DUBLIN 3

AREA	TOWNLANDS	COUNTY	MINERALS	START	SURRENDERED
505	CLONYEGAN	WESTMEATH	BASE METALS, BARYTES & SILVER	22/06/1985	
635	ROXBOROUGH	LIMERICK	BASE METALS, BARYTES & SILVER	06/12/1996	
636	WHITEHALL	LIMERICK	BASE METALS, BARYTES & SILVER	06/12/1996	
649A	SEEFIN (BY ASSIGNMENT)	OFFALY	BASE METALS, BARYTES & SILVER	26/07/1982	
1226	BALLYMORE (BY ASSIGNMENT)	WESTMEATH	BASE METALS, BARYTES & SILVER	16/05/1968	
1228	CREEVE (BY ASSIGNMENT)	WESTMEATH	BASE METALS, BARYTES & SILVER	16/05/1968	
1229	GLEN (BY ASSIGNMENT)	WESTMEATH	BASE METALS, BARYTES & SILVER	16/05/1968	
2016	CRINKILL (BY ASSIGNMENT)	OFFALY	BASE METALS, BARYTES & SILVER	26/07/1976	
2239	JOHNSTOWN UPPER	WICKLOW	BASE METALS, BARYTES, GOLD & SILVER	28/07/2003	
2529	CAHERCONLISH	LIMERICK	BASE METALS, BARYTES & SILVER	06/12/1996	
2530	DROMBANE	LIMERICK	BASE METALS, BARYTES & SILVER	13/11/1995	
2670	FORTEL (BY ASSIGNMENT)	OFFALY	BASE METALS, BARYTES & SILVER	25/11/1985	
3115	TOWNPARKS (BY ASSIGNMENT)	OFFALY	BASE METALS, BARYTES & SILVER	25/11/1985	

**MINCO IRELAND LIMITED (Continued)**

162 CLONTARF ROAD  
DUBLIN 3

AREA	TOWNLANDS	COUNTY	MINERALS	START	SURRENDERED
3156	TYONE	TIPPERARY	BASE METALS, BARYTES & SILVER	16/04/1987	
3268	RACE	LIMERICK	BASE METALS, BARYTES & SILVER	08/11/1991	
3342	COOGA LOWER	LIMERICK	BASE METALS, BARYTES & SILVER	25/05/1999	
3344	BRITTAS	LIMERICK	BASE METALS, BARYTES & SILVER	25/05/1999	
3431	LISNAGRY	LIMERICK	BASE METALS, BARYTES, SILVER & PLATINUM GROUP MINERALS	30/05/2005	
3569	MONANEARLA	TIPPERARY	BASE METALS, BARYTES & SILVER	13/10/1988	13/11/2006
3647	CAPPAGH	TIPPERARY/ LIMERICK	BASE METALS, BARYTES & SILVER	08/11/1991	
3668	MIDDLEWALK	TIPPERARY/ OFFALY	BASE METALS, BARYTES & SILVER	20/01/1992	
3678	KNIGH	TIPPERARY	BASE METALS, BARYTES & SILVER	11/03/1992	
3425	MONSEA	TIPPERARY	BASE METALS, BARYTES & SILVER	05/03/1993	
3727	SOPWELL	TIPPERARY	BASE METALS, BARYTES & SILVER	05/03/1993	
3857	SLIEVEFOORE	WICKLOW/ WEXFORD	BASE METALS, BARYTES, GOLD & SILVER	28/07/2003	
3908	INCHMORE	LIMERICK	BASE METALS, BARYTES & SILVER	17/07/2001	

**MINCO PLC–WESTLAND EXPLORATION LIMITED**

162 CLONTARF ROAD  
DUBLIN 3

AREA	TOWNLANDS	COUNTY	MINERALS	START	SURRENDERED
3722	ATHLONE	WESTMEATH	BASE METALS, BARYTES SILVER, GEM MINERALS & GOLD	05/10/1992	13/11/2006

**MINERAL ESTATES (IRELAND) LIMITED**

C/O W.A. EXPLORATION SERVICES PTY LIMITED  
22 MONTES SQUARE  
RIVERTON  
WESTERN AUSTRALIA 6148  
AUSTRALIA

AREA	TOWNLANDS	COUNTY	MINERALS	START	SURRENDERED
3220	LOUGHSHINNY (BY ASSIGNMENT)	DUBLIN	BASE METALS, BARYTES, SILVER & GOLD	18/09/1996	

**ORIEL SELECTION TRUST LIMITED**

CASTLECOMER  
COUNTY KILKENNY

AREA	TOWNLANDS	COUNTY	MINERALS	START	SURRENDERED
1022	FALLEIGHTER	MAYO	BASE METALS, BARYTES, SILVER & GOLD	27/04/2005	
3774	RINN	MAYO	BASE METALS, BARYTES, SILVER & GOLD	27/04/2005	
3887	CASHEL	MAYO	BASE METALS, BARYTES, SILVER & GOLD	27/04/2005	
3929	GLENTAVRAUN	MAYO	BASE METALS, BARYTES, SILVER & GOLD	27/04/2005	
3930	KILMOVEE	MAYO	BASE METALS, BARYTES, SILVER & GOLD	27/04/2005	

**ORMONDE BRICK LIMITED**

CASTLECOMER  
COUNTY KILKENNY

AREA	TOWNLANDS	COUNTY	MINERALS	START	SURRENDERED
3345	GORTEEN (PART)	KILKENNY	COAL & FIRECLAY	14/09/1998	

**OVOCA GOLD PLC.**

YORK HOUSE  
REAR 176 RATHGAR ROAD  
DUBLIN 6

AREA	TOWNLANDS	COUNTY	MINERALS	START	SURRENDERED
3545	KILCOLMAN	LIMERICK	BASE METALS, BARYTES & SILVER	11/02/1999	
3858	ASHGROVE	LIMERICK	BASE METALS, BARYTES & SILVER	17/01/1997	
3859	BALLYNACALLY	LIMERICK	BASE METALS, BARYTES & SILVER	17/01/1997	

**RENNICKS AND BENNETT LIMITED**  
C/O TARA MINES LTD.  
KNOCKUMBER  
NAVAN  
COUNTY MEATH

AREA	TOWNLANDS	COUNTY	MINERALS	START	SURRENDERED
1496	SCALLANSTOWN	MEATH	BASE METALS, BARYTES & SILVER	16/08/1971	

**TECK COMINCO LIMITED**  
600-200 BURRARD STREET  
VANCOUVER, BRITISH COLUMBIA

CANADA V6C 3L9

AREA	TOWNLANDS	COUNTY	MINERALS	START	SURRENDERED
134	CARNAUN	GALWAY	BASE METALS, BARYTES, SILVER, GOLD & PLATINUM GROUP MINERALS	25/01/2006	
184	CROSS	LONGFORD WESTMEATH	BASE METALS, BARYTES, SILVER, GOLD & PLATINUM GROUP MINERALS	08/02/2006	
622	LEGAN	LONGFORD WESTMEATH	BASE METALS, BARYTES, SILVER, GOLD & PLATINUM GROUP MINERALS	20/02/2006	
643	CARROWROE	GALWAY	BASE METALS, BARYTES, SILVER, GOLD & PLATINUM GROUP MINERALS	25/01/2006	
666	EDGEWORTHSTOWN	LONGFORD	BASE METALS, BARYTES, SILVER, GOLD & PLATINUM GROUP MINERALS	15/12/2005	
667	KEELOGES	LONGFORD WESTMEATH	BASE METALS, BARYTES, SILVER, GOLD & PLATINUM GROUP MINERALS	20/02/2006	
1178	GARR	OFFALY	BASE METALS, BARYTES, SILVER, GOLD & PLATINUM GROUP MINERALS	08/08/2006	
1181	CLONBORE	WESTMEATH	BASE METALS, BARYTES, SILVER, GOLD & PLATINUM GROUP MINERALS	26/06/2006	

**TECK COMINCO LIMITED (Continued)**

600-200 BURRARD STREET  
VANCOUVER, BRITISH COLUMBIA

CANADA V6C 3L9

AREA	TOWNLANDS	COUNTY	MINERALS	START	SURRENDERED
1344	RATHOWEN	WESTMEATH	BASE METALS, BARYTES, SILVER, GOLD & PLATINUM GROUP MINERALS	30/11/2005	
1345	GRANGE	WESTMEATH	BASE METALS, BARYTES, SILVER, GOLD & PLATINUM GROUP MINERALS	30/11/2005	
1346	BALLINALACK	WESTMEATH	BASE METALS, BARYTES, SILVER, GOLD & PLATINUM GROUP MINERALS	30/11/2005	
1347	MULTYFARNHAM	WESTMEATH	BASE METALS, BARYTES, SILVER, GOLD & PLATINUM GROUP MINERALS	30/11/2005	
1351	TAGHMON	WESTMEATH	BASE METALS, BARYTES, SILVER, GOLD & PLATINUM GROUP MINERALS	30/11/2005	
1352	BALLAGH	WESTMEATH	BASE METALS, BARYTES, SILVER, GOLD & PLATINUM GROUP MINERALS	30/11/2005	
1383	BOTTOMY	LONGFORD WESTMEATH	BASE METALS, BARYTES, SILVER, GOLD & PLATINUM GROUP MINERALS	20/02/2006	
1385	MOYNE	LONGFORD WESTMEATH	BASE METALS, BARYTES, SILVER, GOLD & PLATINUM GROUP MINERALS	20/02/2006	

**TECK COMINCO LIMITED (Continued)**

600-200 BURRARD STREET  
VANCOUVER, BRITISH COLUMBIA

CANADA V6C 3L9

AREA	TOWNLANDS	COUNTY	MINERALS	START	SURRENDERED
1406	KILLUCAN	WESTMEATH	BASE METALS, BARYTES, SILVER, GOLD & PLATINUM GROUP MINERALS	30/01/2006	
2062	RAHIN	OFFALY	BASE METALS, BARYTES, SILVER, GOLD & PLATINUM GROUP MINERALS	26/06/2006	
2096	RAHALLY	GALWAY	BASE METALS, BARYTES, SILVER, GOLD & PLATINUM GROUP MINERALS	25/01/2006	
2097	BOOKEEN SOUTH	GALWAY	BASE METALS, BARYTES, SILVER, GOLD & PLATINUM GROUP MINERALS	25/01/2006	
2100	BALLYDONNELLAN EAST	GALWAY	BASE METALS, BARYTES, SILVER, GOLD & PLATINUM GROUP MINERALS	25/01/2006	
2539	KILLOWEN	OFFALY	BASE METALS, BARYTES, SILVER, GOLD & PLATINUM GROUP MINERALS	08/08/2006	
2540	CASTLEJORDAN	MEATH	BASE METALS, BARYTES, SILVER, GOLD & PLATINUM GROUP MINERALS	08/08/2006	
2567	ABBEVILLE	TIPPERARY	BASE METALS, BARYTES, SILVER, GOLD & PLATINUM GROUP MINERALS	21/08/2006	

**TECK COMINCO LIMITED (Continued)**

600-200 BURRARD STREET  
VANCOUVER, BRITISH COLUMBIA

CANADA V6C 3L9

AREA	TOWNLANDS	COUNTY	MINERALS	START	SURRENDERED
2760	LOUGHREA	GALWAY	BASE METALS, BARYTES, SILVER, GOLD & PLATINUM GROUP MINERALS	25/01/2006	
3152	RAHARENRY	WESTMEATH	BASE METALS, BARYTES, SILVER, GOLD & PLATINUM GROUP MINERALS	30/01/2006	
3232	LYNN	WESTMEATH	BASE METALS, BARYTES, SILVER, GOLD & PLATINUM GROUP MINERALS	02/11/2006	
3374	MOYVALLEY	KILDARE	BASE METALS, BARYTES, SILVER, GOLD & PLATINUM GROUP MINERALS	08/08/2006	
3474	SRADUFF	ROSCOMMON	BASE METALS, BARYTES, SILVER, GOLD & PLATINUM GROUP MINERALS	24/02/2006	
3476	BALLYQUICK	TIPPERARY	BASE METALS, BARYTES, SILVER, GOLD & PLATINUM GROUP MINERALS	31/01/2006	
3477	PORTLAND	TIPPERARY	BASE METALS, BARYTES, SILVER, GOLD & PLATINUM GROUP MINERALS	31/01/2006	
3575	RIVERSTOWN	WESTMEATH	BASE METALS, BARYTES, SILVER, GOLD & PLATINUM GROUP MINERALS	26/06/2006	

**TECK COMINCO LIMITED (Continued)**

600-200 BURRARD STREET  
VANCOUVER, BRITISH COLUMBIA

CANADA V6C 3L9

AREA	TOWNLANDS	COUNTY	MINERALS	START	SURRENDERED
3576	KINNEGAD	WESTMEATH	BASE METALS, BARYTES, SILVER, GOLD & PLATINUM GROUP MINERALS	26/06/2006	
3634	CLONDALEE MORE	LONGFORD	BASE METALS, BARYTES, SILVER, GOLD & PLATINUM GROUP MINERALS	15/12/2005	
3636	CLONDALEE MORE	MEATH	BASE METALS, BARYTES, SILVER, GOLD & PLATINUM GROUP MINERALS	08/08/2006	
3840	LECARROW	GALWAY	BASE METALS, BARYTES, SILVER, GOLD & PLATINUM GROUP MINERALS	25/01/2006	
3934	ROOSKAGH	ROSCOMMON	BASE METALS, BARYTES, SILVER, GOLD & PLATINUM GROUP MINERALS	24/02/2006	
3935	SIONHILL	WESTMEATH	BASE METALS, BARYTES, SILVER, GOLD & PLATINUM GROUP MINERALS	31/01/2006	
3936	KILLINAGH	LONGFORD WESTMEATH	BASE METALS, BARYTES, SILVER, GOLD & PLATINUM GROUP MINERALS	20/02/2006	
3937	MILLTOWN	WESTMEATH	BASE METALS, BARYTES, SILVER, GOLD & PLATINUM GROUP MINERALS	26/06/2006	

**TECK COMINCO LIMITED (Continued)**

600-200 BURRARD STREET  
VANCOUVER, BRITISH COLUMBIA

CANADA V6C 3L9

AREA	TOWNLANDS	COUNTY	MINERALS	START	SURRENDERED
3938	TOOR	MEATH	BASE METALS, BARYTES, SILVER, GOLD & PLATINUM GROUP MINERALS	26/06/2006	
3939	MOLERICK	MEATH	BASE METALS, BARYTES, SILVER, GOLD & PLATINUM GROUP MINERALS	26/06/2006	

**WESTLAND EXPLORATION LIMITED**

162 CLONTARF ROAD  
DUBLIN 3

AREA	TOWNLANDS	COUNTY	MINERALS	START	SURRENDERED
1440R	GIBSTOWN (BY ASSIGNMENT)	MEATH	BASE METALS, BARYTES & SILVER	23/10/1972	
1653	COOLBALLY (BY ASSIGNMENT)	LAOIS	BASE METALS, BARYTES & SILVER	22/02/1983	

## **PART 3**

### ***Receipts***

#### **Moneys collected by the Minister in the period from 1 July 2006 to 31 December 2006 under Minerals Development Acts, 1940-1999**

The total amount of moneys collected by the Minister under or by virtue of any lease, permission, or licence under those Acts set out in the list in Part 5 was €3,627,642.

#### **Other receipts in the said period**

The total amount of moneys collected by the Minister during the period from other sources [leases granted under the Mines and Minerals Act, 1931 (No. 54)] amounted to €75.

## **PART 4**

### ***Minerals Acquisition Orders made under the Minerals Development Act, 1940***

#### **Minerals Acquisition Orders made under that Act were:**

- (i)** Minerals Acquisition (Slieveardagh Coalfield) Order, 1941 (lands near Thurles, Co. Tipperary) (Coal)
- (ii)** Minerals Acquisition (County Roscommon) Order, 1942 (lands near Gubbarudda, Co. Roscommon) (All minerals)
- (iii)** Minerals Acquisition Order 1946 (lands near Kingscourt, Co. Cavan) (All minerals)
- (iv)** Minerals Acquisition Order 1954 (lands near Avoca, Co. Wicklow) (All minerals)
- (v)** Minerals Acquisition Order 1955 (lands near Avoca, Co. Wicklow) (All minerals)
- (vi)** Minerals Acquisition (East Clare) Order, 1956 (lands near Ennis) (All minerals)
- (vii)** Minerals Acquisition (Roaring Water) Order, 1956 (lands near Skibbereen, Co. Cork) (All minerals)
- (viii)** Minerals Acquisition (Kenmare) Order, 1956 (lands near Kenmare, Co. Kerry) (All minerals)
- (ix)** Minerals Acquisition (Bonmahon) Order, 1956 (lands near Bonmahon, Co. Waterford) (All minerals)
- (x)** Minerals Acquisition (Allihies) Order, 1957 (lands near Allihies, Co. Cork) (All minerals)
- (xi)** Minerals Acquisition (Allihies) Order, 1960 (lands near Allihies, Co. Cork) (All minerals)
- (xii)** Minerals Acquisition (Carhoon and other townlands) Order, 1962 (lands near Tynagh, Co. Galway) (All minerals)
- (xiii)** Minerals Acquisition (Druming and other townlands) Order, 1963 (lands near Druming, Co. Longford) (All minerals)
- (xiv)** Minerals Acquisition (Ardateggle and other townlands) Order, 1964 (lands near Rossmore, Co. Laois) (All minerals)
- (xv)** Minerals Acquisition (Gortdrum and other townlands) Order, 1965 (lands near Gortdrum, Co. Tipperary) (All minerals)
- (xvi)** Minerals Acquisition (Gortnacleha and other townlands) Order, 1965 (lands near Silvermines, Co. Tipperary) (All minerals)
- (xvii)** Minerals Acquisition (Ballybeg, Co. Clare) Order, 1970 (All minerals)

## **PART 5**

### ***Main Legislation Governing Minerals Prospecting and Development in Ireland***

The main legislative provisions governing minerals prospecting and development in Ireland in the period of this report are contained in the **Minerals Development Acts, 1940-1999**, and **Regulations** made thereunder:

#### **Minerals Development Acts**

- Minerals Development Act, 1940 (No. 31)
- Petroleum and Other Minerals Development Act, 1960 (No. 7)
- Minerals Development Act, 1979 (No. 12)
- Minerals Development Act, 1995 (No. 15)
- Minerals Development Act, 1999 (No. 21)
- Merchant Shipping (Investigation of Casualties) Act, 2000 (No. 14)

#### **Regulations**

- Minerals Development Regulations, 1979 (No. 340)
- Minerals Development (Amendment) Regulations, 1994 (No. 319)
- Minerals Development (Application fees for certain State mining facilities) Regulations, 1996 (No. 259)

## PART 7

### *Dáil Questions Answered by the Minister for Communications, Marine and Natural Resources in the Six Months ended 31 December 2006 in Relation to Minerals Matters*

<b>Questions</b> (W = Written, O = Oral)	<b>Date answered</b>
<b>To ask the Minister for Communications, Marine and Natural Resources:</b>	
... the total amount spent by his Department in terms of advertising in newspapers, magazines and electronic media in respect of each year since 2002; and if he will make a statement on the matter.  (W) – Eamon Gilmore.	5 July 2006
... the non-Governmental agencies or organisations his Department has provided funding to in 2004, 2005 and 2006; the amount of funding provided to each in each year; the number of applications for funding submitted to his Department in total; the number of these applications which were refused; the reason for same; the percentage of his Department's overall annual budget such funding equates to; and if he will make a statement on the matter.  (W) – Catherine Murphy.	6 July 2006
... the procurement procedure for buying mineral, petroleum and natural gas rights off the North East Coast of Ireland; and if he will make a statement on the matter.  (W) – Enda Kenny.	27 September 2006
... his views on whether all further granting of exploration licences be suspended pending the completion of the review of the current fiscal regime; and if he will make a statement on the matter.  (W) – Martin Ferris.	10 October 2006
... if he has had discussions with oil, gas or other exploration companies with a view to identification of a new licencing regime that would meet all requirements; and if he will make a statement on the matter.  (O) – Bernard Allen. (Nominated by: Bernard J. Durkan).	21 November 2006

<b>Questions</b> (W = Written, O = Oral)	<b>Date answered</b>
<b>To ask the Minister for Communications, Marine and Natural Resources:</b>	
<p>... if he will ensure in the context of a future review of oil, gas or other mineral exploration licences that such regime is pitched in such a way as to encourage exploration and at the same time be seen to give a fair, adequate and transparent return to the taxpayer; and if he will make a statement on the matter.</p> <p>(O) – Padraic McCormack. (Nominated by: Bernard J. Durkan).</p>	21 November 2006
<p>... his preferred options in respect of his anticipated review of the exploration licencing regime in the future; and if he will make a statement on the matter.</p> <p>(O) – Paul Connaughton. (Nominated by: Bernard J. Durkan).</p>	21 November 2006
<p>... the nature of discussions he has had within his Department or with the exploration sector within the context of the review he has suggested of the exploration licencing regime; and if he will make a statement on the matter.</p> <p>(O) – Padraic McCormack. (Nominated by: Bernard J. Durkan).</p>	21 November 2006