

**DEPARTMENT OF COMMUNICATIONS,  
MARINE AND NATURAL RESOURCES**

**MINERALS DEVELOPMENT ACTS, 1940-1999**

**REPORT BY THE MINISTER FOR COMMUNICATIONS,  
MARINE AND NATURAL RESOURCES  
FOR THE SIX MONTHS ENDED  
31 DECEMBER 2003**

**IN ACCORDANCE WITH SECTION 77 OF THE MINERALS  
DEVELOPMENT ACT, 1940 AND SECTION 8 OF  
THE MINERALS DEVELOPMENT ACT, 1979**

**EXPLORATION AND MINING DIVISION**  
*Minerals Production MP 01/04*

---

**DUBLIN**  
**PUBLISHED BY THE STATIONERY OFFICE**

---

**To be purchased through any bookseller, or directly from the  
GOVERNMENT PUBLICATIONS SALE OFFICE  
SUN ALLIANCE HOUSE  
MOLESWORTH STREET, DUBLIN 2**

**This report may also be found on the Internet  
at [www.emd.ie](http://www.emd.ie) where it was posted shortly after  
its presentation to the Oireachtas**

---

**Sale Price: €12.70**

**© Government of Ireland 2004**

## **MINERALS DEVELOPMENT ACTS, 1940-1999**

### ***Report by the Minister for Communications, Marine and Natural Resources for the Six Months ended 31 December 2003***

This **Report** is compiled under Section 77 of the Minerals Development Act, 1940 and Section 8 of the Minerals Development Act, 1979.

The **Report** sets out details of the State Mining Leases, State Mining Licences and Prospecting Licences current as of **31 December 2003** and the total amount of all moneys collected by the Minister under or by virtue of any such Lease or Licence or otherwise in connection with the Minerals Development Acts for the six months ended **31 December 2003**.

As of **31 December 2003** there were:

- **5** extant State Mining Licences
- **11** extant State Mining Leases
- **280** extant Prospecting Licences

In the period of six months ended **31 December 2003**:

- **17** Prospecting Licences were granted
- **46** Prospecting Licences were surrendered
- Total receipts amounted to **€835,557.62**.

### **HIGHLIGHTS OF PERIOD**

- While base metal prices in US\$ showed some improvement in the second half of 2003, the benefits of this were offset by the weak \$/€ exchange rate. The average monthly price of zinc for the period was €756 per tonne, which was up by €49 on the first half of the year. However, the equivalent average for the second half of 2002 was €784. This continues to cause financial difficulties for mining in Ireland.
- Despite this, mining continued at the three base metal mines: Tara Mines Limited's mine at Navan, Co. Meath; The Lisheen Mine, Co. Tipperary; and Arcon Mines Limited at Galmoy, Co. Kilkenny.
- Arcon awaits a Planning Decision from Kilkenny County Council to develop a newly discovered ore zone, the R Zone, which has exceptionally high grades (18.2% Zn and 6.9% Pb). Discussions on terms for a new State Mining Facility for the R Zone are ongoing.
- Ownership of Tara Mines Limited transferred to New Boliden from Outokumpu, as part of a major sale and asset transfer between the two major international groups. Meath County Council's decision to grant Planning Permission for Tara's proposed development of the Nevinstown part of the Navan orebody (formerly owned by Bula Limited) was appealed to An Bord Pleanála. A planning application for a major south west extension of the mine, the SWEX, was made in October but was withdrawn in December. The Company intends to reapply in January 2004. A new State Mining Licence for part of this development will be finalised early in 2004.

## RECENT DEVELOPMENTS IN EXPLORATION AND MINING

The most significant recent developments in the minerals industry have been the changes in ownership at two of Ireland's three base metal mines. **Outokumpu-Tara Mines** have announced that, as part of a major restructuring, the Navan mine has been purchased by **Boliden**, while **Ivernia West** have sold their 50% interest in the Lisheen Mine to their partner **Anglo American**. Production continues at all three mines. All three also continue to explore in the immediate vicinity of their mines, but otherwise active exploration for base metals is very limited, a consequence of the still depressed state of the zinc market. However, there is some activity for gold, with **Conroy Diamonds and Gold** and **Minco** both actively evaluating properties.

### DEVELOPMENT

- **Galmoy (Arcon Mines)**

During 2003, **Arcon Mines Limited** milled 660,000t (the same as in 2002), grading 11.27% Zn and 2.66% Pb, at their underground zinc-lead mine at Galmoy, Co. Kilkenny. This yielded 119,000t of zinc concentrate (51.68% Zn). No lead concentrate was produced. Total production since mining commenced in 1997 amounts to 3.8Mt grading 10.72% Zn and 1.41% Pb. Reserves at the end of June 2003 were 5Mt grading 14.5% Zn and 4.3% Pb. This includes the R Zone mineralization.

In September Arcon announced that the R Zone, discovered in 2002, contains 2.3Mt at 19.8% Zn, 6% Pb and 65g/t Ag, confirming it as one of the richest zones of massive sulphide mineralization found in Ireland. Planning and mining facility applications have been submitted to develop this zone. A capital expenditure programme in the mill to treat the higher grades has commenced, and this will result in increased production and will enable lead and silver by-product sales, according to the company. Arcon will continue with their near-mine exploration programme to evaluate previously identified gravity anomalies northeast of the R Zone. The gravity anomalies are similar to that which led to the R Zone discovery.

- **Lisheen (Anglo American)**

During 2003, the Lisheen Mine in Co. Tipperary produced 1.52Mt of ore grading 12.30% Zn and 2.08% Pb. This yielded 314,000t of zinc concentrate (53.9% Zn) and 35,000t of lead concentrate (60.0% Pb). Total production (1999 to 2003) is 5.09Mt grading 11.63% Zn and 2.41% Pb. Reserves at end 2003 were 9.86Mt grading 12.41% Zn and 2.14% Pb, with additional resources of 0.89Mt grading 12.25% Zn and 1.12% Pb.

In September 2003, **Ivernia West Inc.** (Ivernia) announced that it had completed the sale of the company's 50% participating interest in the Lisheen Mine to **Anglo American Plc.** (Anglo). Anglo holds the other 50%. Pursuant to the sale, Anglo purchased all of the shares of Ivernia's subsidiary **Ivernia West Limited** and its other subsidiaries that hold Ivernia's interest in the Lisheen Mine, for a consideration consisting of an aggregate cash purchase price of US\$1.8 million and the assumption by Anglo of all Ivernia's existing debt obligations relating to the Lisheen Mine, including outstanding project loans, in the amount of US\$73.19 million. The agreement for the sale is the product of previously disclosed negotiations held between Ivernia and Anglo since the first quarter of 2003.

- **Navan (Outokumpu-Tara Mines)**

At the end of December 2003, ownership of Tara Mines Limited, the operating company at the underground zinc-lead mine at Navan, Co. Meath was transferred from **Outokumpu Zinc** to **New Boliden**. The transfer of ownership was part of a major restructuring of both multinational companies. The restructuring saw Boliden acquire Outokumpu's zinc and copper mining and smelting operations, while Outokumpu acquired Boliden's fabrication and technology sales operations. Outokumpu is a major shareholder (49%) in New Boliden. Boliden is the fourth largest zinc mining company in the world, with mines in Sweden and Canada as well as Ireland

During 2003, the Navan Mine produced 2.5Mt of ore grading 7.94% Zn and 1.68% Pb. This produced 335,000t of zinc concentrate (56.2% Zn) and 47,000t of lead concentrate (62.3% Pb). Total production to date (1977-2003) is 57.7Mt grading 8.33% Zn and 2.05% Pb. At the end of 2002, total Ore Reserves (Proven and Probable) were 24.4Mt grading 9.2% Zn and 1.9% Pb. In addition, Mineral Resources (Measured, Indicated and Inferred) totalled 21.2Mt grading 7.3% Zn and 2.2% Pb.

## • **Knocknacran (Irish Gypsum)**

Gypsum has been continuously mined in Ireland since 1936. Irish Gypsum produce some 400,000t of gypsum annually from its opencast mine at Knocknacran, County Monaghan. In July 2003, the company submitted a Planning Application to Monaghan County Council (MCC) for a new underground gypsum mine at Drummond. The new mine would be adjacent to the Knocknacran mine, and is within the area of the company's current State Mining Lease. The Planning Application is currently under consideration by MCC, and a decision is expected in early 2004.

## **EXPLORATION**

### • **General**

The historically low price of zinc has resulted in the curtailment of most base metal exploration programmes throughout Ireland. However, concessions granted by the Department of Communications, Marine and Natural Resources in 2002 have meant that Prospecting Licence holders will not be penalised for not meeting expenditure requirements during 2002 or 2003. Accordingly, licensees have been able to retain their properties during this severe downturn in the sector, and the expectation is that these companies will be able to resume exploration without delay as soon as the exploration climate improves.

### • **Company Activities**

**Arcon International Resources** (Arcon) are carrying out exploration restricted to the immediate vicinity of the company's underground zinc-lead mine at Galmoy. The company raised €5.4 million by way of a placing, and this money will be used to continue the exploration programme, as well as funding additional capital expenditure to increase production capacity, and for general working capital purposes. Exploration will be focused on previously identified gravity anomalies northeast of the R Zone, anomalies that are similar to that which led to the discovery in 2002 of the R Zone.

**Conroy Diamonds and Gold Plc.** (Conroy) have announced further results from their gold exploration programme in Co. Monaghan. In May, Conroy had said that soil sampling at Corkaskea, 1km north of the Tullybuck-Lisglassan gold prospect, had outlined an ENE-trending gold anomaly some 400m long. Trenching on the central part of the anomaly intersected a zone of gold mineralization in bedrock, including 12m at 4.92g/t Au and, separately, 23m at 2.25g/t Au. The gold occurs in fault gouge and breccia with disseminated sulphides. Subsequent drilling confirmed that the gold is associated with a flat-lying NNW fault zone similar to those known to host the gold mineralization at Tullybuck-Lisglassan. Best drill intersection, at 6.5m depth, was 3.65m at 1.76g/t Au.

In September, Conroy announced that a soil sampling programme in Ballygreany townland, 1km east of Tullybuck-Lisglassan, had revealed a well-defined gold anomaly (500m x 125m). Several values were in excess of 500ppb Au, with background of 4ppb Au. Initial trenching at Ballygreany revealed two separate zones of gold in bedrock. The two zones are approximately 30m apart, and the mineralization appears to be associated with zones of quartz-ankerite veining within sheared arenites and argillites. Within the zones, the gold is associated with pyrite. Grab samples gave grades of up to 2.25g/t Au, and channel sampling returned 8m grading 0.78g/t Au. Preliminary drilling outlined

two zones of low-grade gold mineralization. The zones are similar to, and correlatable with, the zones encountered during the channel sampling. Further diamond drilling and trenching is planned for this prospect. Glencar Mining Plc. hold two prospecting licences in eastern Co. Laois. Drilling in 2001 has suggested that the property has a similarity to the setting of the Galmoy and Lisheen orebodies, although the main mineralised lithological horizon at Lisheen and Galmoy was not present in that drilling. Glencar are looking for a joint venture partner for this project.

In October, Minco announced that they had commenced exploration on their gold licences in Co. Kildare and in Co. Wicklow. In Kildare the target is the Tipperkiven prospect, where drilling will be carried out, while in Wicklow the exploration will be in the Goldmines River area, near Avoca. A drilling programme will be undertaken in 2004 on Minco's zinc properties in Limerick, where the company are in joint venture with Noranda.

Tara Mines Limited continues to explore in the immediate vicinity of the Navan orebody. The particular targets include the southwestern extension of the orebody (SWEX and SWEX-B), its northeastern extension (Nevinstown, formerly the Bula mineralization), and the northwestern margin (Liscarton, acquired recently from Glencar Mining).

## • Joint Venture Opportunities

In March 2003, Exploration and Mining Division produced a leaflet entitled *Mineral Exploration in Ireland: Joint Venture Opportunities*. The leaflet contains information on 14 different properties where the licensees are looking for joint venture partners. Eight companies are offering properties, and the minerals under offer include base metals, gold and diamonds. Copies of the leaflet are available free of charge from the Exploration and Mining Division (email [emdtechnical.info@dcmnr.gov.ie](mailto:emdtechnical.info@dcmnr.gov.ie)) or from our website (<emd.ie>).

## • Prospecting Licence Information

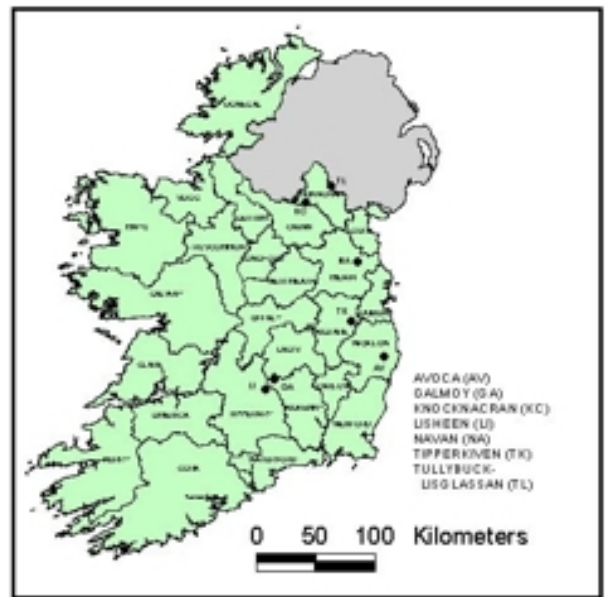
During the past six months 17 new Prospecting Licences were issued, while over the same period 46 licences were surrendered or expired; the number of licences held at 31 December 2003 is 280.

Fifteen licences were issued to Canadian junior company **Tournigan Gold Corporation**; all are in Co. Donegal, and are for Base Metals, Silver and Gold. **Minco** were awarded two licences, both in Co. Wicklow. All licences are for Base Metals, Barytes, Silver and Gold.

## Exploration Assistance

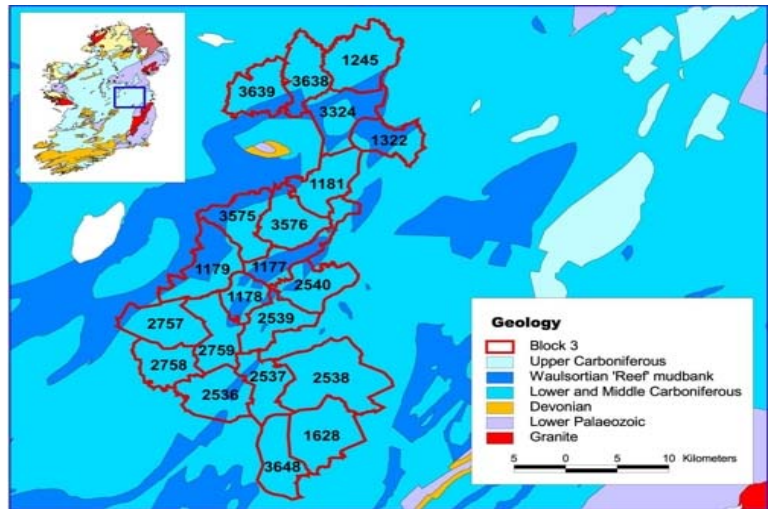
The Exploration and Mining Division (EMD) has in place four significant complementary programmes to encourage exploration investment. The common theme is to provide, free of charge and in digital format, all non-confidential data that is available through the Division and to provide added value when the opportunity arises.

Under the **Airborne Data Release** Programme, geophysical surveys by BHP over a further seven areas have been



**County map of Ireland showing locations mentioned in the text.**

released since June. The **Exploration Data Release** Programme now has three themes. *Firstly*, the release of data over six years old from currently held PL areas. There has been a further release for 22 areas in Counties Galway, Roscommon, Westmeath and Offaly (see figure). *Secondly*, data from surrendered ground. In the past six months data from 58 areas has been made available. The *third* theme is the progressive provision of such data through the internet (minex.gov.ie). To date data from 111 areas are available, including all the areas in the November Prospecting Licence Competition.

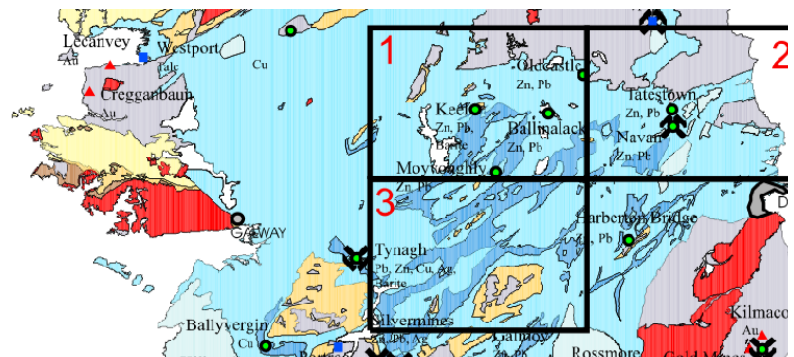


Latest areas for which data over six years old has been released

Additional data is being continuously made available.

The third programme, the **MAPS (Mineral Administration and Programme Support) Initiative**, is designed to provide all the needed information and available background data to assess ground and handle the business requirements of permitting through the internet. The first phase, providing e-Business facilities for applying for Prospecting Licences, regulatory information, exploration company data and a range of GIS datasets, is now online (through <minex.gov.ie>). The second phase will provide improved GIS facilities and full online services for all regulatory requirements during the 'life' of a Prospecting Licence. This phase is expected to be completed by June 2004.

The **Airborne Magnetic Interpretation Initiative**, in partnership with PGW Europe Limited, is behind schedule. The first release is the Block 2 area (see figure), which will now be available on CD in early 2004. It will include a report and various maps at 1:100,000 scale (geophysical interpretation, processed magnetic, prospecting licence areas and mineral deposits).



Areas included within the Airborne Magnetic Interpretation Initiative

The other Blocks will be available by May 2004.

## PDAC CONVENTION 2004, TORONTO

The 72<sup>nd</sup> Annual Convention and Trade show of the Prospectors and Developers Association of Canada (PDAC) will be held in Toronto from 7<sup>th</sup> to 10<sup>th</sup> March 2004. The Exploration and Mining Division will again be represented at the Trade Show, where we will be joined by our colleagues from the Northern Ireland Department of Enterprise, Trade and Investment and the Geological Survey of Northern Ireland, in a combined **Ireland** exhibit.

## TOP TEN EXPLORATION COMPANIES RANKED BY PROSPECTING LICENCES HELD AT 31 DECEMBER 2003

<b>COMPANY</b>	<b>PLS HELD</b>
Tara Mines Limited	59
Conroy Diamonds and Gold Plc.	27
Minco Ireland Limited (incl. joint licence)	23
Noranda Exploration Ireland Limited	23
Navan Resources Plc.	19
Asarco Exploration Inc.	15
Tournigan Gold Corporation	15
Arcon Exploration Plc. (incl. Arcon International Resources Plc.)	13
Central Mining Finance	12
Mineral Estates (Ireland) Limited	11
<b>TOTAL:</b>	<b>217</b>

**A further 63 licences are held by an additional 19 companies, i.e. a total of 29 companies hold 280 licences.**

## RECENT DEVELOPMENTS IN EXPLORATION AND MINING

The most significant recent developments in the minerals industry have been the changes in ownership at two of Ireland's three base metal mines. **Outokumpu-Tara Mines** have announced that, as part of a major restructuring, the Navan mine has been purchased by **Boliden**, while **Ivernia West** have sold their 50% interest in the Lisheen Mine to their partner **Anglo American**. Production continues at all three mines. All three also continue to explore in the immediate vicinity of their mines, but otherwise active exploration for base metals is very limited, a consequence of the still depressed state of the zinc market. However, there is some activity for gold, with **Conroy Diamonds and Gold** and **Minco** both actively evaluating properties.

### DEVELOPMENT

#### • **Galmoy (Arcon Mines)**

During 2003, **Arcon Mines Limited** milled 660,000t (the same as in 2002), grading 11.27% Zn and 2.66% Pb, at their underground zinc-lead mine at Galmoy, Co. Kilkenny. This yielded 119,000t of zinc concentrate (51.68% Zn). No lead concentrate was produced. Total production since mining commenced in 1997 amounts to 3.8Mt grading 10.72% Zn and 1.41% Pb. Reserves at the end of June 2003 were 5Mt grading 14.5% Zn and 4.3% Pb. This includes the R Zone mineralization.

In September Arcon announced that the R Zone, discovered in 2002, contains 2.3Mt at 19.8% Zn, 6% Pb and 65g/t Ag, confirming it as one of the richest zones of massive sulphide mineralization found in Ireland. Planning and mining facility applications have been submitted to develop this zone. A capital expenditure programme in the mill to treat the higher grades has commenced, and this will result in increased production and will enable lead and silver by-product sales, according to the company. Arcon will continue with their near-mine exploration programme to evaluate previously identified gravity anomalies northeast of the R Zone. The gravity anomalies are similar to that which led to the R Zone discovery.

#### • **Lisheen (Anglo American)**

During 2003, the Lisheen Mine in Co. Tipperary produced 1.52Mt of ore grading 12.30% Zn and 2.08% Pb. This yielded 314,000t of zinc concentrate (53.9% Zn) and 35,000t of lead concentrate (60.0% Pb). Total production (1999 to 2003) is 5.09Mt grading 11.63% Zn and 2.41% Pb. Reserves at end 2003 were 9.86Mt grading 12.41% Zn and 2.14% Pb, with additional resources of 0.89Mt grading 12.25% Zn and 1.12% Pb.

In September 2003, **Ivernia West Inc.** (Ivernia) announced that it had completed the sale of the company's 50% participating interest in the Lisheen Mine to **Anglo American Plc.** (Anglo). Anglo holds the other 50%. Pursuant to the sale, Anglo purchased all of the shares of Ivernia's subsidiary **Ivernia West Limited** and its other subsidiaries that hold Ivernia's interest in the Lisheen Mine, for a consideration consisting of an aggregate cash purchase price of US\$1.8 million and the assumption by Anglo of all Ivernia's existing debt obligations relating to the Lisheen Mine, including outstanding project loans, in the amount of US\$73.19 million. The agreement for the sale is the product of previously disclosed negotiations held between Ivernia and Anglo since the first quarter of 2003.

#### • **Navan (Outokumpu-Tara Mines)**

At the end of December 2003, ownership of Tara Mines Limited, the operating company at the underground zinc-lead mine at Navan, Co. Meath was transferred from **Outokumpu Zinc** to **New Boliden**. The transfer of ownership was part of a major restructuring of both multinational companies. The restructuring saw Boliden acquire Outokumpu's zinc and copper mining and smelting operations, while Outokumpu acquired Boliden's fabrication and technology sales operations. Outokumpu is a major shareholder (49%) in New Boliden. Boliden is the fourth largest zinc mining company in the world, with mines in Sweden and Canada as well as Ireland

During 2003, the Navan Mine produced 2.5Mt of ore grading 7.94% Zn and 1.68% Pb. This produced 335,000t of zinc concentrate (56.2% Zn) and 47,000t of lead concentrate (62.3% Pb). Total production to date (1977-2003) is 57.7Mt grading 8.33% Zn and 2.05% Pb. At the end of 2002, total Ore Reserves (Proven and Probable) were 24.4Mt grading 9.2% Zn and 1.9% Pb. In addition, Mineral Resources (Measured, Indicated and Inferred) totalled 21.2Mt grading 7.3% Zn and 2.2% Pb.

- **Knocknacran (Irish Gypsum)**

Gypsum has been continuously mined in Ireland since 1936. Irish Gypsum produce some 400,000t of gypsum annually from its opencast mine at Knocknacran, County Monaghan. In July 2003, the company submitted a Planning Application to Monaghan County Council (MCC) for a new underground gypsum mine at Drummond. The new mine would be adjacent to the Knocknacran mine, and is within the area of the company's current State Mining Lease. The Planning Application is currently under consideration by MCC, and a decision is expected in early 2004.

## **EXPLORATION**

- **General**

The historically low price of zinc has resulted in the curtailment of most base metal exploration programmes throughout Ireland. However, concessions granted by the Department of Communications, Marine and Natural Resources in 2002 have meant that Prospecting Licence holders will not be penalised for not meeting expenditure requirements during 2002 or 2003. Accordingly, licensees have been able to retain their properties during this severe downturn in the sector, and the expectation is that these companies will be able to resume exploration without delay as soon as the exploration climate improves.

- **Company Activities**

**Arcon International Resources** (Arcon) are carrying out exploration restricted to the immediate vicinity of the company's underground zinc-lead mine at Galmoy. The company raised €5.4 million by way of a placing, and this money will be used to continue the exploration programme, as well as funding additional capital expenditure to increase production capacity, and for general working capital purposes. Exploration will be focused on previously identified gravity anomalies northeast of the R Zone, anomalies that are similar to that which led to the discovery in 2002 of the R Zone.

**Conroy Diamonds and Gold Plc.** (Conroy) have announced further results from their gold exploration programme in Co. Monaghan. In May, Conroy had said that soil sampling at Corkaskea, 1km north of the Tullybuck-Lisglassan gold prospect, had outlined an ENE-trending gold anomaly some 400m long. Trenching on the central part of the anomaly intersected a zone of gold mineralization in bedrock, including 12m at 4.92g/t Au and, separately, 23m at 2.25g/t Au. The gold occurs in fault gouge and breccia with disseminated sulphides. Subsequent drilling confirmed that the gold is associated with a flat-lying NNW fault zone similar to those known to host the gold mineralization at Tullybuck-Lisglassan. Best drill intersection, at 6.5m depth, was 3.65m at 1.76g/t Au.

In September, Conroy announced that a soil sampling programme in Ballygreany townland, 1km east of Tullybuck-Lisglassan, had revealed a well-defined gold anomaly (500m x 125m). Several values were in excess of 500ppb Au, with background of 4ppb Au. Initial trenching at Ballygreany revealed two separate zones of gold in bedrock. The two zones are approximately 30m apart, and the mineralization appears to be associated with zones of quartz-ankerite veining within sheared arenites and argillites. Within the zones, the gold is associated with pyrite. Grab samples gave grades of up to 2.25g/t Au, and channel sampling returned

8m grading 0.78g/t Au. Preliminary drilling outlined two zones of low-grade gold mineralization. The zones are similar to, and correlatable with, the zones encountered during the channel sampling. Further diamond drilling and trenching is planned for this prospect. Glencar Mining Plc. hold two prospecting licences in eastern Co. Laois. Drilling in 2001 has suggested that the property has a similarity to the setting of the Galmoy and Lisheen orebodies, although the main mineralised lithological horizon at Lisheen and Galmoy was not present in that drilling. Glencar are looking for a joint venture partner for this project.

In October, Minco announced that they had commenced exploration on their gold licences in Co. Kildare and in Co. Wicklow. In Kildare the target is the Tipperkiven prospect, where drilling will be carried out, while in Wicklow the exploration will be in the Goldmines River area, near Avoca. A drilling programme will be undertaken in 2004 on Minco's zinc properties in Limerick, where the company are in joint venture with Noranda.

Tara Mines Limited continues to explore in the immediate vicinity of the Navan orebody. The particular targets include the southwestern extension of the orebody (SWEX and SWEX-B), its northeastern extension (Nevinstown, formerly the Bula mineralization), and the northwestern margin (Liscarton, acquired recently from Glencar Mining).

## • Joint Venture Opportunities

In March 2003, Exploration and Mining Division produced a leaflet entitled *Mineral Exploration in Ireland: Joint Venture Opportunities*. The leaflet contains information on 14 different properties where the licensees are looking for joint venture partners. Eight companies are offering properties, and the minerals under offer include base metals, gold and diamonds. Copies of the leaflet are available free of charge from the Exploration and Mining Division (email [emdtechnical.info@dcmnr.gov.ie](mailto:emdtechnical.info@dcmnr.gov.ie)) or from our website (<emd.ie>).

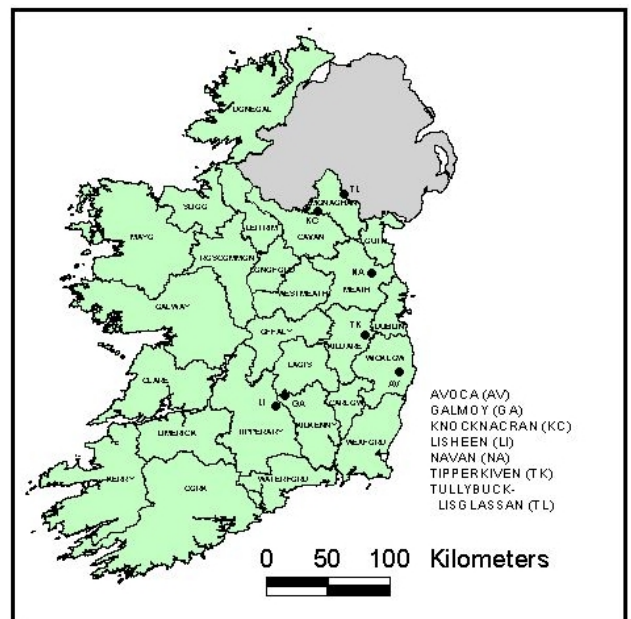
## • Prospecting Licence Information

During the past six months 17 new Prospecting Licences were issued, while over the same period 46 licences were surrendered or expired; the number of licences held at 31 December 2003 is 280.

Fifteen licences were issued to Canadian junior company **Tournigan Gold Corporation**; all are in Co. Donegal, and are for Base Metals, Silver and Gold. **Minco** were awarded two licences, both in Co. Wicklow. All licences are for Base Metals, Barytes, Silver and Gold.

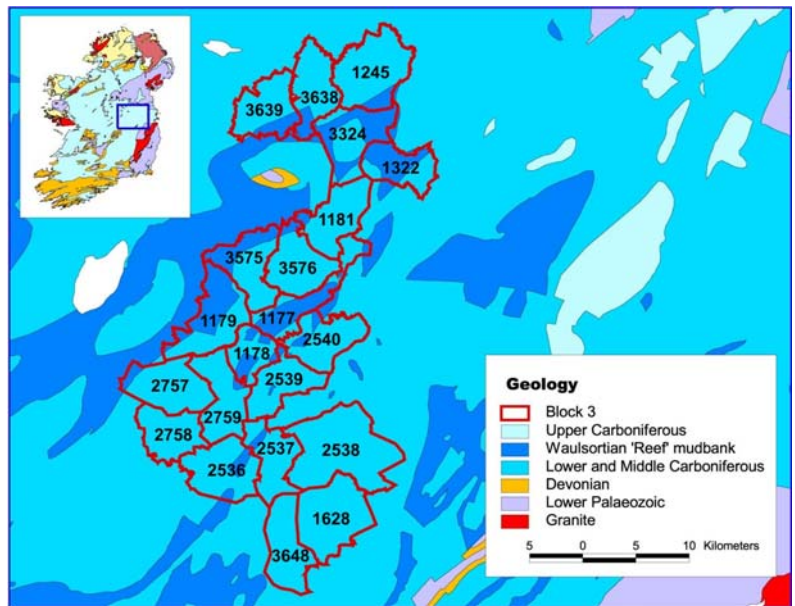
## Exploration Assistance

The Exploration and Mining Division (EMD) has in place four significant complementary programmes to encourage exploration investment. The common theme is to provide, free of charge and in digital format, all non-confidential data that is available through the Division and to provide added value when the opportunity arises.



**County map of Ireland showing locations mentioned in the text.**

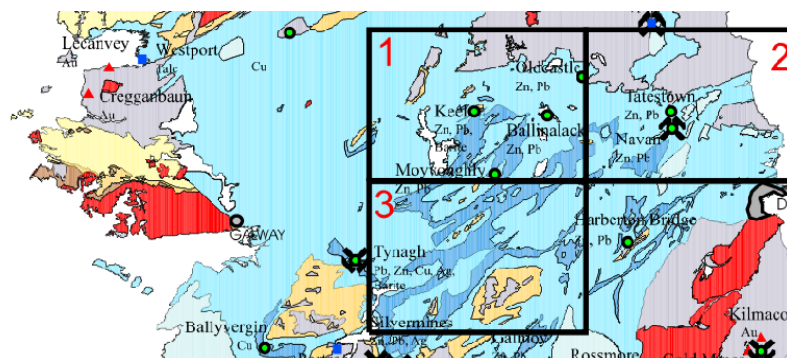
Under the **Airborne Data Release Programme**, geophysical surveys by BHP over a further seven areas have been released since June. The **Exploration Data Release Programme** now has three themes. *Firstly*, the release of data over six years old from currently held PL areas. There has been a further release for 22 areas in Counties Galway, Roscommon, Westmeath and Offaly (see figure). *Secondly*, data from surrendered ground. In the past six months data from 58 areas has been made available. The *third* theme is the progressive provision of such data through the internet (minex.gov.ie). To date data from 111 areas are available, including all the areas in the November Prospecting Licence Competition. Additional data is being continuously made available.



**Latest areas for which data over six years old has been released**

The third programme, the **MAPS (Mineral Administration and Programme Support) Initiative**, is designed to provide all the needed information and available background data to assess ground and handle the business requirements of permitting through the internet. The first phase, providing e-Business facilities for applying for Prospecting Licences, regulatory information, exploration company data and a range of GIS datasets, is now online (through <minex.gov.ie>). The second phase will provide improved GIS facilities and full online services for all regulatory requirements during the 'life' of a Prospecting Licence. This phase is expected to be completed by June 2004.

The **Airborne Magnetic Interpretation Initiative**, in partnership with PGW Europe Limited, is behind schedule. The first release is the Block 2 area (see figure), which will now be available on CD in early 2004. It will include a report and various maps at 1:100,000 scale (geophysical interpretation, processed magnetic, prospecting licence areas and mineral deposits). The other Blocks will be available by May 2004.

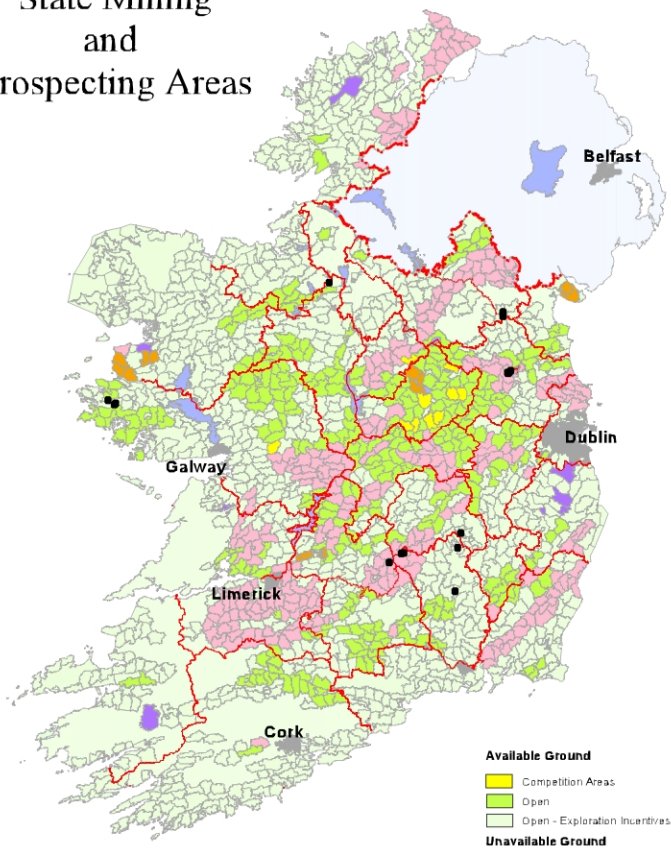


**Areas included within the Airborne Magnetic Interpretation Initiative**

## PDAC CONVENTION 2004, TORONTO

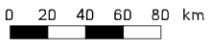
The 72<sup>nd</sup> Annual Convention and Trade show of the Prospectors and Developers Association of Canada (PDAC) will be held in Toronto from 7<sup>th</sup> to 10<sup>th</sup> March 2004. The Exploration and Mining Division will again be represented at the Trade Show, where we will be joined by our colleagues from the Northern Ireland Department of Enterprise, Trade and Investment and the Geological Survey of Northern Ireland, in a combined **Ireland** exhibit.

# Current Status of State Mining and Prospecting Areas



- Available Ground**
- Competition Areas
  - Open
  - Open - Exploration Incentives
- Unavailable Ground**
- Unavailable
  - Held
- Current Mining Facilities

Exploration and Mining Division  
Department of Communications, Marine  
and Natural Resources



**TOP TEN EXPLORATION COMPANIES RANKED BY  
PROSPECTING LICENCES HELD AT 31 DECEMBER 2003**

<b>COMPANY</b>	<b>PLS HELD</b>
Tara Mines Limited	59
Conroy Diamonds and Gold Plc.	27
Minco Ireland Limited (incl. joint licence)	23
Noranda Exploration Ireland Limited	23
Navan Resources Plc.	19
Asarco Exploration Inc.	15
Tournigan Gold Corporation	15
Arcon Exploration Plc. (incl. Arcon International Resources Plc.)	13
Central Mining Finance	12
Mineral Estates (Ireland) Limited	11
<b>TOTAL:</b>	<b>217</b>

**A further 63 licences are held by an additional 19 companies,  
i.e. a total of 29 companies hold 280 licences.**

## PART 1

### *11 State Mining Leases and 5 State Mining Licences granted under the Acts and current during the period 1 July to 31 December 2003*

(Except those marked \* which were granted under the Mines and Minerals Act, 1931 (No. 54))

### SUMMARY

SML NO.	HELD BY	COUNTY (PART OF)	VALIDITY		PRESENT POSITION
			FROM	TO	
<b>State Mining Licences</b>					
1	Arcon Mines Limited	Kilkenny	03.02.1995	02.02.2016	<b>Lead and Zinc</b> - In production
2	Tara Mines Limited	Meath	03.07.1998	31.08.2010	<b>Lead and Zinc</b> - In production
3	Tara Mines Limited	Meath	03.07.1998	31.08.2010	<b>Lead and Zinc</b> - In production
4	Tara Mines Limited	Meath	11.09.2000	31.08.2010	<b>Lead and Zinc</b> - In production
6	Arcon Mines Limited	Kilkenny	29.08.2002	02.02.2016	<b>Lead and Zinc</b> - In production
<b>State Mining Leases</b>					
17*	Joyce's Marble Quarries Limited	Galway	01.10.1933	30.09.2032	<b>Marble and other Minerals</b> In production
23*	Flemings Fireclays Limited	Laois	01.03.1935	29.02.2032	<b>Fireclay, Coal</b> No production since about 1985/86
30*	Connemara Marble Products Limited	Galway	01.11.1937	31.10.2034	<b>Marble</b> Currently producing
37	Flemings Fireclays Limited	Laois	14.11.1940	13.11.2039	<b>Fireclay, Coal and other Minerals</b> No production since about 1985/86
79	Joyce's Marble Quarries Limited	Galway	01.12.1957	30.11.2056	<b>Marble and other Minerals</b> In production
100	Roadstone Provinces Limited	Kilkenny	01.01.1969	31.12.2008	<b>Dolomite, Dolomitic Limestone and other Minerals</b> In production
115	Flynn & Lehany Coal Mines Limited	Roscommon	01.10.1970	31.03.2043	<b>Coal, etc.</b> No production since 1989 approx
116	Tara Mines Limited	Meath	01.09.1975	31.08.2010	<b>Zinc, lead and other Minerals</b> In production
137	Ormonde Brick Limited	Kilkenny	31.01.1997	30.01.2012	<b>Coal and Fireclay</b> In production
139	Irish Gypsum Limited	Monaghan	12.11.2002	11.11.2032	<b>Gypsum, Anhydrite and other Minerals</b> In production
140	(1) Anglo American Lisheen Mining Limited (formerly Minorco Lisheen Mining Limited) (2) Ivernia Lisheen Mining Limited (3) Lisheen Milling Co.	Tipperary	07.10.1997	06.10.2027	<b>Zinc, lead and other Minerals</b> In production

**Name and Address of Lessee:**

**Anglo American Lisheen Mining Limited  
Ivernia Lisheen Mining Limited  
Lisheen Milling Co.  
Killoran, Moyne, Thurles, Co. Tipperary**

**Minerals:**

All minerals except gold

**Lands Concerned:**

Derryville (part), Killoran (part), Ballyerk (part), Barnalisheen (part), Co. Tipperary (Lease No. 140)

**Area:**

188 hectares

**Period:**

30 years from 7 October 1997 (expires 6 October 2027)

**Consideration:**

Dead Rent of €63,486.90 for the first year; €126,973.80 for the second year; €380,921.42 for each subsequent year until production ceases; and €25,394.76 for each year thereafter; with provision to index the Dead Rent at the end of every third year from the commencement date to take account of changes in money values. Royalties, into which the Dead Rent will merge, at the following rates:

1¾% of revenue for first three years of production; 3% of revenue for fourth and fifth years of production; and 4½% of revenue for sixth and every subsequent year of production.

**Name and Address of Licensee:**

**Arcon Mines Limited  
60 Merrion Road, Ballsbridge, Dublin 4**

**Minerals:**

Lead, zinc and other minerals

**Lands concerned:**

Castletown (part), Garrylaun (part), Rathreagh (part), Whiteswall (part), Co. Kilkenny (Licence No. 1)

**Area:**

141 hectares or thereabouts

**Period:**

21 years from 3 February 1995 (expires 2 February 2016)

**Consideration:**

Licence Fee of €63,486.90 per annum for each of the first two years of Licence; €126,973.80 per annum for the third year of Licence and each subsequent year until the working of the minerals has permanently ceased; and €25,394.76 per annum for each year thereafter with provision to index the Licence Fee at the end of every third year from the commencement date to take account of changes in money values. Royalties, in which the Licence Fee will merge, at the following rates:

1½% per annum of revenue for first three years of mine production; 2½% of revenue for fourth year of mine production; and 3% per annum of revenue for fifth and every subsequent year of mine production.

**Name and Address of Licensee:**            **Arcon Mines Limited**  
60 Merrion Road, Ballsbridge, Dublin 4

**Minerals:**                                    Lead, zinc and other minerals

**Lands concerned:**                        Rathreagh (part) (Licence No. 6)

**Area:**    26 hectares or thereabouts

**Period:**                                        13.5 years from 29 August 2002 (expires 2 February 2016)

**Consideration:**                            Licence Fee of €5,000.00 per annum for each year until the working of the minerals has permanently ceased. In February 2004 the Licence Fee shall be increased or decreased by the same proportion as the CPI has increased or decreased between February 2001 and February 2004. Thereafter the Licence Fee shall be indexed at the end of every three-year period to account for changes in money values. Royalties, in which the Licence Fee will merge, at the following rate:

3% per annum of revenue for every year of mine production.

**Name and Address of Lessee:**            **Connemara Marble Products Limited**  
Moycullen, Co. Galway

**Minerals:**                                    Marble and all other minerals

**Lands Concerned:**                        Cregg (part), Ballinahinch, Co. Galway (Lease No. 30)

**Area:**    4 hectares or thereabouts

**Period:**                                        97 years from 1 November 1937 (expires 31 October 2034)

**Consideration:**                            Dead Rent of €25.39 per annum and Royalties into which Dead Rent will merge, at the rate of 2½% on all sales of marble raised and gotten.

**Name and Address of Lessee:**            **Fleming's Fireclays Limited**  
The Swan, Athy, Co. Kildare

**Minerals:**                                    Coal, fireclay and other minerals (Lease No. 23)

**Lands Concerned:**                        Moyadd (part), Aghadreen (part), Knockacrin (part) and Slatt Lower, Co. Laois

**Area:**    384 hectares

**Period:**                                        97 years from 1 March 1935 (expires 29 February 2032)

**Consideration:**                            Dead Rent of €31.74 per annum and royalties, in which the Dead Rent will merge, at the following rates:

€0.0159 per metric tonne on coal, culm or carbonaceous matter; €0.0105 per metric tonne on fireclay raised.

**Name and Address of Lessee:**            **Fleming's Fireclays Limited**

The Swan, Athy, Co. Kildare

By Assignment

**Minerals:** Coal, fireclay and other minerals (Lease No. 37)

**Lands Concerned:** Slatt Lower (part) and Ballylehane Upper (part), Co. Laois

**Area:** 121.4 hectares

**Period:** 99 years from 14 November 1940 (expires 13 November 2039)

**Consideration:** Dead Rent of €31.74 per annum and royalties, in which the Dead Rent will merge, at the following rates:

€0.0159 per metric tonne on coal, culm or carbonaceous matter; €0.0105 per metric tonne on fireclay and 4% of the value of all other minerals.

**Name and Address of Lessee:** **Flynn and Lehany Coal Mines Limited**  
c/o Mr. John Barrett, 17 Castle Street  
Dalkey, Co. Dublin

**Minerals:** Coal, culm, carbonaceous matter, fireclay, gannister and all other minerals

**Lands Concerned:** Parts of Gubbarudda, Greaghnageeragh and Cashel, Co. Roscommon (Lease No. 115)

**Area:** 192.22 hectares

**Period:** 72.5 years from 1 October 1970 (expires 31 March 2043)

**Consideration:** Dead Rent of €38.09 per annum and royalties, in which the Dead Rent will merge at the following rates:

€0.0156 per metric tonne on coal, culm and carbonaceous matter raised, gotten and taken away; €0.0104 per metric tonne on fireclay raised, gotten and taken away; €0.0052 per metric tonne on gannister raised, gotten and taken away; 4% of all other minerals.

**Name and Address of Lessee:** **Irish Gypsum Limited**  
Unit 14, Park West Industrial Park, Dublin 12

**Minerals:** Gypsum, anhydrite and all other minerals

**Lands Concerned:** Ballycartlan, Derryleeg, Derrynaglah, Derrynascobe, Drumgoosat, Drummond (E.D. Enagh), Enagh, Knocknacran East and Knocknacran West, Co. Monaghan, and Cormey in Co. Cavan (Lease No. 139)

**Area:** 4.57 square kilometres

**Period:** 30 years from 12 November 2002 (expires 11 November 2032)

**Consideration:** Dead Rent of €29,387.08 per annum and royalties in which the Dead Rent will merge at the following rates:

€0.6343 per tonne on the minerals raised, gotten and taken away.

On the 1<sup>st</sup> day of December 2005, and every four years thereafter, the Dead Rent and royalties shall be altered to take account of changes in monetary values and price levels.

**Name and Address of Lessee:**                    **Joyce's Marble Quarries Limited**  
Lissoughter, Recess, Connemara, Co. Galway  
  
By Assignment

**Minerals:**                    Marble and all other minerals  
**Lands Concerned:**        Barnanoraun (part), Co. Galway (Lease No. 17)  
**Area:**                         24.65 hectares or thereabouts  
**Period:**                     99 years from 1 October 1933 (expires 30 September 2032)  
**Consideration:**            Dead Rent of €15.24 per annum and royalties, in which the Dead Rent will merge, at the following rate:  
  
€0.3174 per metric tonne on all marble raised, gotten and taken away and 4% of all other minerals.

**Name and Address of Lessee:**                    **Joyce's Marble Quarries Limited**  
Lissoughter, Recess, Connemara, Co. Galway  
  
By Assignment

**Minerals:**                    Marble and all other minerals  
**Lands Concerned:**        Tievebreen (part), Co. Galway (Lease No. 79)  
**Area:**                         16.19 hectares  
**Period:**                     99 years from 1 December 1957 (expires 30 November 2056)  
**Consideration:**            Dead Rent of €25.39 per annum and royalties, in which the Dead Rent will merge, at the following rates:  
  
€0.3123 per metric tonne on all marble raised, gotten and taken away, 4% on all other minerals.

**Name and Address of Lessee:**                    **Ormonde Brick Limited**  
Castlecomer, Co. Kilkenny

**Minerals:** Coal and fireclay

**Lands Concerned:** Coolbawn (part), Co. Kilkenny (Lease No. 137)

**Area:** 18.4 hectares

**Period:** 15 years from 31 January 1997 (expires 30 January 2012)

**Consideration:** Dead Rent of €634.87 per annum and royalty, into which Dead Rent will merge at the following rates:

€0.3174 per tonne on fireclay raised; 2½% of sales revenue (net of VAT) on coal when sales exceed 1,000 tonnes per annum.

**Name and Address of Lessee:** **Roadstone Provinces Limited**  
Saggart, Co. Dublin

By Assignment

**Minerals:** Dolomite, dolomitic limestone and all other minerals

**Lands Concerned:** Dunbell Big (part), Co. Kilkenny (Lease No. 100)

**Area:** 256.97 hectares

**Period:** 40 years from 1 January 1969 (expires 31 December 2008)

**Consideration:** Dead Rent of €190.46 per annum and royalty, in which the Dead Rent will merge at the following rates:

€0.0312 per metric tonne on dolomite and dolomitic limestone raised, gotten and taken away and 4% of all other minerals.

**Name and Address of Licensee:** **Tara Mines Limited**  
Knockumber House, Navan, Co. Meath

**Minerals:** Lead, zinc and other minerals

**Lands Concerned:** Ardbraccan (part), Knockumber (part), Co. Meath (Licence No. 2)

**Area:** 35.61 hectares

**Period:** 3 July 1998 to 31 August 2010

**Consideration:** Once off payment of €190,460.71 in lieu of Royalties.

**Name and Address of Licensee:**      **Tara Mines Limited**  
Knockumber House, Navan, Co. Meath

**Minerals:**                      Lead, zinc and other minerals

**Lands Concerned:**      Parts of the townlands of Whistlemount in Co. Meath (Licence No. 3)

**Area:**                              1.06 hectares or thereabouts

**Period:**                              3 July 1998 to 31 August 2010

**Consideration:**              Once off payment of €507,895.23 in lieu of royalties.

**Name and Address of Licensee:**      **Tara Mines Limited**  
Knockumber House, Navan, Co. Meath

**Minerals:**                      Lead, zinc and other minerals

**Lands Concerned:**      Part of the townlands of Ardbraccan and Glebe, Co. Meath  
(Licence No. 4)

**Area:**                              39.36 hectares or thereabouts

**Period:**                              11 September 2000 to 31 August 2010

**Consideration:**              Once off payment of €126,973.80 in lieu of royalties.

**Name and Address of Lessee:**      **Tara Mines Limited**  
Knockumber House, Navan, Co. Meath

**Minerals:**                      Lead, zinc and other minerals

**Lands Concerned:**      Parts of the townlands of Whistlemount, Knockumber, Liscartan and other  
townlands in Co. Meath (Lease No. 116)

**Area:**                              1,769 hectares or thereabouts

**Period:**                              35 years from 1 September 1975 (expires 31 August 2010)

**Consideration:**              Dead Rent of €12,697.38 per annum. Dead rent of €44,440.83 per annum in the  
event of stoppage of working the minerals.

## **RATES OF APPLICATION & CONSIDERATION FEES FOR MINERALS PROSPECTING LICENCES (PL)**

### **Application Fee**

There is a standard application fee of €190 per Prospecting Licence Area.

### **Consideration**

<b>Two-Year Period</b>	<b>Consideration Fee</b>
First	€750
Second	€875
Third	€1,500
Fourth and each subsequent two-year period	€2,500

Thus, the fee will be €2,500 per two-year period where a Prospecting Licence is renewed to any person who was the holder of the Prospecting Licence for 6 years or more.

### **Special Consideration as incentive for prospecting in under-explored areas**

A reduced consideration of €1,250 for an initial six-year term was introduced in conjunction with the May 1995 Competition for Minerals Prospecting Licences as a promotional incentive for areas which, in the opinion of the Minister, have been under-explored with regard to their mineral potential, namely,

- (a) open ground, i.e., areas that have never been licensed,
- and
- (b) open areas that have not been licensed for over four years.

## **PART 2**

### ***Minerals Prospecting Licences granted under the Acts and current during the period 1 July to 31 December 2003***

**Note:** The townlands referred to in the second column of the following tables are the key townlands in respect of each prospecting licence. However, in each case, neighbouring townlands (not specified in the Tables) are involved.

The full listing of townlands for any licence area can be found in the Exploration and Mining Division's Exploration Website, which is currently under development. This website can be accessed by going to [www.emd.ie](http://www.emd.ie) and then clicking on the link "EMD launch Exploration Website".

**AMCORP IRELAND LIMITED**ARTHUR COX BUILDING  
EARLSFORT TERRACE  
DUBLIN 2

AREA	TOWNLANDS	COUNTY	MINERALS	START	SURRENDERED
1652	BALLYCOLLA (BY ASSIGNMENT)	LAOIS	BASE METALS, SILVER & BARYTES	28/05/1987	
2069	BRITTAS (BY ASSIGNMENT)	TIPPERARY	BASE METALS, SILVER & BARYTES	28/05/1987	
2218	BOLEY (BY ASSIGNMENT)	LAOIS	BASE METALS, SILVER & BARYTES	28/05/1987	
2258	CASTLELEINY (BY ASSIGNMENT)	TIPPERARY	BASE METALS, SILVER & BARYTES	28/05/1987	
2447	KILCOKE (BY ASSIGNMENT)	TIPPERARY	BASE METALS, SILVER & BARYTES	28/05/1987	
2448	MOYNEARD (BY ASSIGNMENT)	TIPPERARY	BASE METALS, SILVER & BARYTES	28/05/1987	
3262	DERRYVILLE (BY ASSIGNMENT)	TIPPERARY	BASE METALS, SILVER & BARYTES	28/05/1987	
3667	BALLYBODIN (BY ASSIGNMENT)	LAOIS	BASE METALS, BARYTES & SILVER	28/07/1991	
3688	GLEBE	LAOIS	BASE METALS, BARYTES & SILVER	09/01/1997	

**ANGUS AND ROSS PLC.**

ST. CHAD'S HOUSE  
PIERCY END  
KIRKBYMOORSIDE  
YORK YO62 6DQ  
ENGLAND

AREA	TOWNLANDS	COUNTY	MINERALS	START	SURRENDERED
1477	MYSHALL	CARLOW	CAESIUM, TIN, NIOBIUM, LITHIUM, TANTALUM & TUNGSTEN	27/10/1999	30/09/2003
2931	BALLAGHMORE	CARLOW	CAESIUM, TIN, NIOBIUM, LITHIUM, TANTALUM & TUNGSTEN	27/10/1999	30/09/2003
3407	KILLEDMOND	CARLOW	CAESIUM, TIN, NIOBIUM, LITHIUM, TANTALUM & TUNGSTEN	27/10/1999	30/09/2003
3411	GOWLIN	CARLOW	CAESIUM, TIN, NIOBIUM, LITHIUM, TANTALUM & TUNGSTEN	27/10/1999	30/09/2003
3893	AGHABEG	CARLOW	CAESIUM, TIN, NIOBIUM, LITHIUM, TANTALUM & TUNGSTEN	27/10/1999	30/09/2003
3894	BALLYBRACK	CARLOW	CAESIUM, TIN, NIOBIUM, LITHIUM, TANTALUM & TUNGSTEN	27/10/1999	30/09/2003
3895	BALLYCRYSTAL	WEXFORD	CAESIUM, TIN, NIOBIUM, LITHIUM, TANTALUM & TUNGSTEN	27/10/1999	30/09/2003
3896	BALLYLUSK	WEXFORD	CAESIUM, TIN, NIOBIUM, LITHIUM, TANTALUM & TUNGSTEN	27/10/1999	30/09/2003

**ARCON EXPLORATION PLC.**60 MERRION ROAD  
BALLSBRIDGE  
DUBLIN 4

AREA	TOWNLANDS	COUNTY	MINERALS	START	SURRENDERED
586R	KILCORAN (BY ASSIGNMENT)	LAOIS/ KILKENNY	BASE METALS, BARYTES, SILVER & GOLD	26/10/1981	
3245R	AGHADOEN (BY ASSIGNMENT)	KILKENNY	BASE METALS, SILVER, BARYTES & GOLD	19/12/1986	
754	LISDUFF (BY ASSIGNMENT)	LAOIS	BASE METALS, SILVER & BARYTES	20/02/1987	
3312	NEWTOWN (BY ASSIGNMENT)	LAOIS	BASE METALS, SILVER & BARYTES	04/08/1987	
3313	GLASHARE (BY ASSIGNMENT)	KILKENNY	BASE METALS, SILVER & BARYTES	04/08/1987	
1604	BETAGHSTOWN	KILDARE	BASE METALS, BARYTES, SILVER, & GOLD	17/06/1998	
1607	ROBERTSTOWN	KILDARE	BASE METALS, BARYTES, SILVER, & GOLD	17/06/1998	
2671R	COOLE	OFFALY	BASE METALS, SILVER & BARYTES	12/08/1998	
2852	CLONAKENNY	TIPPERARY	BASE METALS, SILVER & BARYTES	21/07/1999	19/07/2003

**ARCON INTERNATIONAL RESOURCES PLC.**

60 MERRION ROAD  
BALLSBRIDGE  
DUBLIN 4

AREA	TOWNLANDS	COUNTY	MINERALS	START	SURRENDERED
1358	BALLYMAHON	LONGFORD	BASE METALS, BARYTES & SILVER	17/08/1981	10/09/2003
2859	KYLE	OFFALY	BASE METALS, BARYTES & SILVER	17/08/1981	
2840	KNOCKDERK	LIMERICK/ TIPPERARY	BASE METALS, BARYTES, SILVER & GOLD	19/12/1986	
582	TIRLICKEN	LONGFORD	BASE METALS, BARYTES & SILVER	19/06/1991	
480	STRADUFF	OFFALY	BASE METALS, BARYTES & SILVER	22/09/1994	
481	FARRANMACSHANE	OFFALY	BASE METALS, BARYTES & SILVER	22/09/1994	

**ASARCO EXPLORATION INC.**

C/O CROWE SCHAFFALITZKY AND ASSOCIATES LIMITED  
6-7 DUNDRUM BUSINESS PARK  
WINDY ARBOUR  
DUBLIN 14

AREA	TOWNLANDS	COUNTY	MINERALS	START	SURRENDERED
1630	DREHID	KILDARE	BASE METALS, BARYTES & SILVER	14/08/1996	
3846	LULLYBEG	KILDARE	BASE METALS, BARYTES & SILVER	04/09/1996	
3866	NEWTOWN	KILDARE	BASE METALS, BARYTES & SILVER	18/06/1997	
600	RATHANGAN (PART)	KILDARE	BASE METALS, SILVER & BARYTES	04/09/2000	
1640	EMO PARK	LAOIS	BASE METALS, SILVER & BARYTES	31/10/2000	
3853	PORTNAHINCH	OFFALY	BASE METALS, SILVER & BARYTES	31/10/2000	
3854	CUSHINA	OFFALY	BASE METALS, SILVER & BARYTES	31/10/2000	
1608	CARRAGH	KILDARE	BASE METALS, SILVER & BARYTES	06/04/2001	
3332	SALLINS	KILDARE	BASE METALS, SILVER & BARYTES	06/04/2001	
3689	GROVE	TIPPERARY	BASE METALS, SILVER & BARYTES	29/04/2002	
468	FARRAN	TIPPERARY/ LIMERICK	BASE METALS, SILVER & BARYTES	29/07/2002	
2654	MONANOUR	TIPPERARY	BASE METALS, SILVER & BARYTES	29/07/2002	
3552	BALLINGLANNA	TIPPERARY	BASE METALS, SILVER & BARYTES	29/07/2002	

**ASARCO EXPLORATION INC.**

C/O CROWE SCHAFFALITZKY AND ASSOCIATES LIMITED

6-7 DUNDRUM BUSINESS PARK

WINDY ARBOUR

DUBLIN 14

AREA	TOWNLANDS	COUNTY	MINERALS	START	SURRENDERED
1624	CLONYHURK	OFFALY	BASE METALS, BARYTES, IRON & SILVER	24/02/2003	
3920	WALSHISLAN	OFFALY	BASE METALS, BARYTES, IRON & SILVER	24/02/2003	

**AURUM EXPLORATION LIMITED**

ORMONDE HOUSE  
METGES LANE  
NAVAN  
CO. MEATH

AREA	TOWNLANDS	COUNTY	MINERALS	START	SURRENDERED
2396	OLDHEAD	MAYO SILVER	GOLD &	13/01/2003	

**BALLINALACK MINERALS LIMITED**

C/O IVERNIA WEST PLC.

IVERNIA HALL

97 HENRY STREET

LIMERICK

AREA	TOWNLANDS	COUNTY	MINERALS	START	SURRENDERED
1344	RATHOWN (BY ASSIGNMENT)	WESTMEATH	BASE METALS, BARYTES & SILVER	28/04/1969	03/07/2003
1345	GRANGE (BY ASSIGNMENT)	WESTMEATH	BASE METALS, BARYTES & SILVER	28/04/1969	03/07/2003
1346	BALLINALACK (BY ASSIGNMENT)	WESTMEATH	BASE METALS, BARYTES & SILVER	28/04/1969	03/07/2003

**BHP WORLD EXPLORATION INC.**  
 SUITE 2300-1111 WEST GEORGIA STREET  
 VANCOUVER, BRITISH COLUMBIA  
 CANADA V6E 4M3

AREA	TOWNLANDS	COUNTY	MINERALS	START	SURRENDERED
3653	KEELOGE	WESTMEATH	BASE METALS, GOLD, SILVER & BARYTES	20/11/1994	19/09/2003
2864	DURROW DEMESNE	OFFALY	BASE METALS, BARYTES, SILVER & GOLD	20/11/1995	19/09/2003
1500	RATHCORE	MEATH	BASE METALS, BARYTES, SILVER, GOLD & IRON	14/12/1995	
2675	TYRRELLSPASS	WESTMEATH	BASE METALS, BARYTES, GOLD, SILVER & IRON	04/03/1996	30/09/2003
2676	TYRRELLSTOWN	WESTMEATH	BASE METALS, BARYTES, GOLD, SILVER & IRON	04/03/1996	30/09/2003
3588	CAPPADUF	WESTMEATH	BASE METALS, BARYTES, GOLD, SILVER & IRON	04/03/1996	30/09/2003
3589	KILHUGH	WESTMEATH	BASE METALS, BARYTES, GOLD, SILVER & IRON	04/03/1996	30/09/2003
2579	CURRACHASE	LIMERICK	BASE METALS, BARYTES, SILVER & GOLD	23/06/1998	
2696	CARRIGOGUNNEL	LIMERICK	BASE METALS, BARYTES, SILVER & GOLD	23/06/1998	
2835	KILDIMO	LIMERICK	BASE METALS, BARYTES, SILVER & GOLD	23/06/1998	
3608	ASKEATON	LIMERICK	BASE METALS, BARYTES, SILVER & GOLD	23/06/1998	

**BILLITON IRELAND RESOURCES B.V.**

C/O BHP WORLD EXPLORATION INC.  
SUITE 2300-1111 WEST GEORGIA STREET  
VANCOUVER, BRITISH COLUMBIA  
CANADA V6E 4M3

AREA	TOWNLANDS	COUNTY	MINERALS	START	SURRENDERED
382	SION HILL	WESTMEATH	BASE METALS, BARYTES & SILVER	01/04/1996	09/10/2003
3152	RAHARNEY	WESTMEATH	BASE METALS, BARYTES & SILVER	01/04/1996	09/10/2003
3640	NEWMARKET	CLARE	BASE METALS, BARYTES, CALCITE, FLOURITE, GOLD & SILVER	15/11/1999	15/08/2003
3641	LATOON NORTH	CLARE	BASE METALS, BARYTES, CALCITE, FLOURITE, GOLD & SILVER	15/11/1999	15/08/2003
2590	CLOONCOOL	CLARE	BASE METALS, BARYTES, CALCITE, FLOURITE, GOLD & SILVER	01/06/2001	15/08/2003

**BROPHY, LIAM M. & PETER KEALY**  
FAIRYMOUNT  
CRETTYARD  
CARLOW

AREA	TOWNLANDS	COUNTY	MINERALS	START	SURRENDERED
3891	ROSSMORE (PART)	LAOIS	COAL & FIRECLAY	27/09/1999	

**CAMBRIDGE MINERAL RESOURCES PLC.**

SIMMONDS HOUSE  
SIMMONDS BUILDINGS  
BRISTOL ROAD  
HAMBROOK  
BRISTOL BS16 1RY  
ENGLAND

AREA	TOWNLANDS	COUNTY	MINERALS	START	SURRENDERED
2964	BALLYLOSKEY	DONEGAL	GEM MINERALS	30/08/1996	
3496	MUFF	DONEGAL	GEM MINERALS	30/08/1996	
3856	GLENGAD	DONEGAL	GEM MINERALS	30/08/1996	
3007	KINDROGHED	DONEGAL	GEM MINERALS	28/05/1997	
3056	ARDMALIN	DONEGAL	GEM MINERALS	28/05/1997	
3062	OORT	DONEGAL	GEM MINERALS	28/05/1997	
3008	GLENNAGIVENY	DONEGAL	GEM MINERALS	06/08/1999	
3094	CARROWNAFF	DONEGAL	GEM MINERALS	06/08/1999	
3063	BALLYARGUS	DONEGAL	GEM MINERALS	04/10/1999	
3820	LEAMACROSSAN	DONEGAL	GEM MINERALS	04/10/1999	

**CENTRAL MINING FINANCE**

7 HOBART PLACE  
LONDON SW1W 0HH  
ENGLAND

AREA	TOWNLANDS	COUNTY	MINERALS	START	SURRENDERED
2895	KILGORY	CLARE	BASE METALS, BARYTES & SILVER	01/03/1993	
3729	FEAKLE	CLARE	BASE METALS, BARYTES & SILVER	01/03/1993	
3787	MAGHERA	CLARE	BASE METALS, BARYTES & SILVER	08/06/1994	
3788	BALLYRAGGET	CLARE	BASE METALS, BARYTES & SILVER	08/06/1994	
3789	DERRYMORE WEST	CLARE	BASE METALS, BARYTES & SILVER	08/06/1994	
3788	BALLYRAGGET	CLARE	CALCITE & FLUORITE	08/06/1995	
1577	MOYCARKY	TIPPERARY	BASE METALS, BARYTES, SILVER & CALCITE	28/02/1996	
1578	GARRAUN	TIPPERARY	BASE METALS, BARYTES, SILVER & CALCITE	28/02/1996	
3321	BORRIS	TIPPERARY	BASE METALS, BARYTES, SILVER & CALCITE	28/02/1996	
3863	CAPPANAPEASTA	CLARE	BASE METALS, BARYTES, SILVER, CALCITE & FLUORITE	28/05/1997	
3508	SIXMILEBRIDGE	CLARE	BASE METALS, SILVER, BARYTES, CALCITE & FLUORITE	16/11/1998	
3643	CANT	CLARE	BASE METALS, SILVER & BARYTES	25/05/1999	

**CLARE CALCITE LIMITED**

BLOCK 4B, UNIT 5

BLANCHARDSTOWN CORPORATE BUSINESS PARK

DUBLIN 15

AREA	TOWNLANDS	COUNTY	MINERALS	START	SURRENDERED
3679	BALLYHANNAN	CLARE	CALCITE	27/10/1991	

**CONROY DIAMONDS AND GOLD PLC.**

10 UPPER PEMBROKE STREET

DUBLIN 2

AREA	TOWNLANDS	COUNTY	MINERALS	START	SURRENDERED
2194	TULLYBUCK	MONAGHAN	BASE METALS, SILVER, GOLD & BARYTES	15/07/1996	
2683	LECK	MONAGHAN	BASE METALS, SILVER, GOLD & BARYTES	15/07/1996	
3028	KNOCKNAMADDY	MONAGHAN	BASE METALS, SILVER, GOLD & BARYTES	15/07/1996	
3130	CRUMLIN	CAVAN	BASE METALS, SILVER, GOLD & BARYTES	27/11/1996	
3400	DRUMHEEL	CAVAN	BASE METALS, SILVER, GOLD & BARYTES	27/11/1996	
1870	TASSAN	MONAGHAN	BASE METALS, SILVER, GOLD & BARYTES	10/04/1997	
1356	MULLYASH	MONAGHAN	BASE METALS, ANTIMONY, BARYTES, SILVER & GOLD	23/01/1998	
1357	TOMOGROW	MONAGHAN	BASE METALS, ANTIMONY, BARYTES, SILVER & GOLD	23/01/1998	
2193	GRIG	MONAGHAN	BASE METALS, ANTIMONY, BARYTES, SILVER & GOLD	23/01/1998	
2254	FADOO	MONAGHAN	BASE METALS, ANTIMONY, BARYTES, SILVER & GOLD	23/01/1998	
3027	LISDUFF	MONAGHAN	BASE METALS, ANTIMONY, BARYTES, SILVER & GOLD	20/08/1998	
3065	AGHABOG	MONAGHAN	BASE METALS, ANTIMONY, BARYTES, SILVER & GOLD	20/08/1998	

**CONROY DIAMONDS AND GOLD PLC.**  
 10 UPPER PEMBROKE STREET  
 DUBLIN 2

AREA	TOWNLANDS	COUNTY	MINERALS	START	SURRENDERED
3066	CORRASKEA	MONAGHAN	BASE METALS, ANTIMONY, BARYTES, SILVER & GOLD	20/08/1998	
3869	AGHNAMULLEN	MONAGHAN	BASE METALS, ANTIMONY, BARYTES, SILVER & GOLD	20/08/1998	
3870	LACKAFIN	MONAGHAN	BASE METALS, ANTIMONY, BARYTES, SILVER & GOLD	20/08/1998	
3871	TOSSY	MONAGHAN	BASE METALS, ANTIMONY, BARYTES, SILVER & GOLD	20/08/1998	
2140	TONAGHBANE	CAVAN	BASE METALS, BARYTES, GOLD & SILVER	27/09/2000	
2827	BALLANANAGH	CAVAN	BASE METALS, BARYTES, GOLD & SILVER	27/09/2000	
3068	AGHADRUMKEEN (E.D. DAWSONGROVE)	MONAGHAN	BASE METALS, BARYTES, GOLD & SILVER	27/09/2000	
3131	LARAH	CAVAN	BASE METALS, BARYTES, GOLD & SILVER	27/09/2000	
3270	CROSSDOWNEY	CAVAN	BASE METALS, BARYTES, GOLD & SILVER	27/09/2000	
3414	AGHALOORY	CAVAN	BASE METALS, BARYTES, GOLD & SILVER	27/09/2000	
3469	DRUM	MONAGHAN	BASE METALS, BARYTES, GOLD & SILVER	27/09/2000	
3526	GROUSEHALL	CAVAN	BASE METALS, BARYTES, GOLD & SILVER	27/09/2000	

**CONROY DIAMONDS AND GOLD PLC.**

10 UPPER PEMBROKE STREET

DUBLIN 2

AREA	TOWNLANDS	COUNTY	MINERALS	START	SURRENDERED
3562	OLDTOWN	CAVAN	BASE METALS, BARYTES, GOLD & SILVER	27/09/2000	
3563	ARDAMAGH	CAVAN	BASE METALS, BARYTES, GOLD & SILVER	27/09/2000	
3564	TULLYALT	CAVAN	BASE METALS, BARYTES, GOLD & SILVER	27/09/2000	

**CRANDERRY LIMITED**RATHCRONA  
KILMALY  
ENNIS  
CO. CLARE

AREA	TOWNLANDS	COUNTY	MINERALS	START	SURRENDERED
2742	ADAMSTOWN	LOUTH	BASE METALS, BARYTES, SILVER AND GOLD	13/02/2002	29/07/2003
3060	RATHMULLAN	LOUTH	BASE METALS, BARYTES, SILVER AND GOLD	13/02/2002	29/07/2003
3410	TANKARDSTOWN	LOUTH	BASE METALS, BARYTES, SILVER AND GOLD	13/02/2002	29/07/2003
3413	DRUMSHALLOW	LOUTH	BASE METALS, BARYTES, SILVER AND GOLD	13/02/2002	29/07/2003
3558	HORISTOWN	LOUTH	BASE METALS, BARYTES, SILVER AND GOLD	13/02/2002	29/07/2003
3701	GALLAGH	LOUTH	BASE METALS, BARYTES, SILVER AND GOLD	13/02/2002	29/07/2003
3909	DOWDSTOWN	LOUTH	BASE METALS, BARYTES, SILVER AND GOLD	13/02/2002	29/07/2003
3910	BALLYMAD	LOUTH	BASE METALS, BARYTES, SILVER AND GOLD	13/02/2002	29/07/2003
3911	ROKEBY	LOUTH	BASE METALS, BARYTES, SILVER AND GOLD	13/02/2002	29/07/2003
3057	INISHDEA	CLARE	BASE METALS, BARYTES, SILVER AND GOLD	29/07/2002	29/07/2003
3644	STONEHALL	CLARE	BASE METALS, BARYTES, SILVER AND GOLD	29/07/2002	29/07/2003

**FRACTORE PTY. LIMITED**

17 DOWER STREET  
CAMBERWELL  
VICTORIA 3124  
AUSTRALIA

AREA	TOWNLANDS	COUNTY	MINERALS	START	SURRENDERED
3782	CLONPET	TIPPERARY	BASE METALS, BARYTES & SILVER	11/07/2002	

**GLENCAR MINING PLC.**  
71 LOWER BAGGOT STREET  
DUBLIN 2

AREA	TOWNLANDS	COUNTY	MINERALS	START	SURRENDERED
2512	STRADBALLY	LAOIS	BASE METALS, BARYTES & SILVER	15/01/1992	
3662	CASHEL	LAOIS	BASE METALS, SILVER & BARYTES	21/08/1998	

**GROVESPAN LIMITED**  
103 RATHFARNHAM WOOD  
DUBLIN 14

AREA	TOWNLANDS	COUNTY	MINERALS	START	SURRENDERED
2687	RUSSAUN (BY ASSIGNMENT)	GALWAY	BASE METALS, BARYTES & SILVER	30/12/1999	
3692	GORT (BY ASSIGNMENT)	GALWAY	BASE METALS, BARYTES & SILVER	30/12/1999	

**HEREWARD VENTURES PLC.**

SIMMONDS HOUSE  
SIMMONDS BUILDINGS  
BRISTOL ROAD, HAMBROOK  
BRISTOL BS16 1RY  
ENGLAND

AREA	TOWNLANDS	COUNTY	MINERALS	START	SURRENDERED
1341	BALLYCOMMON	OFFALY	BASE METALS, BARYTES, SILVER & GEMSTONES	14/10/1997	
1342	KILCONFERT	OFFALY	BASE METALS, BARYTES, SILVER & GEMSTONES	14/10/1997	
1343	BALLINGAN	OFFALY	BASE METALS, BARYTES, SILVER & GEMSTONES	14/10/1997	
2522	GEASHILL	OFFALY	BASE METALS, BARYTES, SILVER & GEMSTONES	14/10/1997	
2702	KILLEIGH	OFFALY	BASE METALS, BARYTES, SILVER & GEMSTONES	14/10/1997	
2782	MUCKLAGH	OFFALY	BASE METALS, BARYTES, SILVER & GEMSTONES	14/10/1997	
2866	MONASSET	WESTMEATH	BASE METALS, BARYTES, SILVER & GEMSTONES	14/10/1997	
3868	KILCRUTTIN	OFFALY	BASE METALS, BARYTES, SILVER & GEMSTONES	14/10/1997	

**HOGAN, EDWARD ANTHONY**

HOGAN'S PASS  
NENAGH  
CO. TIPPERARY

AREA	TOWNLANDS	COUNTY	MINERALS	START	SURRENDERED
3860	AGLISH	CORK	BASE METALS, SILVER & BARYTES	18/06/1997	

**IRISH MARINE OIL PLC.**

162 CLONTARF ROAD

DUBLIN 3

AREA	TOWNLANDS	COUNTY	MINERALS	START	SURRENDERED
2551	BALLYDARRAGH	WEXFORD	GOLD	01/03/1994	
2554	CLOGHAMON	WEXFORD	GOLD	05/12/1994	
2558	CARNEW	WICKLOW	GOLD	05/12/1994	

**IVERNIA WEST PLC.-RIO ALGOM EXPLORATION INC.**

IVERNIA HALL  
97 HENRY STREET  
LIMERICK

AREA	TOWNLANDS	COUNTY	MINERALS	START	SURRENDERED
1353	HASBOROUGH	WESTMEATH	BASE METALS, BARYTES & SILVER	18/04/2000	02/10/2003

**JADEBAY LIMITED**

9 MARINE VIEW  
PHOENIX TERRACE  
BLACKROCK  
CO. DUBLIN

AREA	TOWNLANDS	COUNTY	MINERALS	START	SURRENDERED
3849	REDCROSS (BY ASSIGNMENT)	WICKLOW	BASE METALS, SILVER, GOLD & BARYTES	11/06/1998	
3850	TIGRONEY (BY ASSIGNMENT)	WICKLOW	BASE METALS, SILVER, GOLD & BARYTES	11/06/1998	

**KENMARE RESOURCES PLC.**

CHATHAM HOUSE  
CHATHAM STREET  
DUBLIN 2

AREA	TOWNLANDS	COUNTY	MINERALS	START	SURRENDERED
1476	KILDAVIN	CARLOW	CAESIUM, TIN, LITHIUM, NIOBIUM, TANTALUM & TUNGSTEN	30/09/2002	
1597	SLIEVEDURDA	CARLOW	CAESIUM, TIN, LITHIUM, NIOBIUM, TANTALUM & TUNGSTEN	27/09/2002	

**MINCO IRELAND LIMITED**  
162 CLONTARF ROAD  
DUBLIN 3

AREA	TOWNLANDS	COUNTY	MINERALS	START	SURRENDERED
2016	CRINKILL (BY ASSIGNMENT)	OFFALY	BASE METALS, BARYTES & SILVER	26/07/1976	
649A	SEEFIN (BY ASSIGNMENT)	OFFALY	BASE METALS, BARYTES & SILVER	26/07/1982	
2670	FORTEL (BY ASSIGNMENT)	OFFALY	BASE METALS, BARYTES & SILVER	25/11/1985	
3115	TOWNPARKS (BY ASSIGNMENT)	OFFALY	BASE METALS, BARYTES & SILVER	25/11/1985	
3156	TYONE	TIPPERARY	BASE METALS, BARYTES & SILVER	16/04/1987	
3318	HOLYCROSS	TIPPERARY	BASE METALS, BARYTES, GOLD & SILVER	19/05/1987	
3569	MONANEARLA	TIPPERARY	BASE METALS, BARYTES & SILVER	13/10/1988	
3268	RACE	LIMERICK	BASE METALS, BARYTES & SILVER	08/11/1991	
3647	CAPPAGH	TIPPERARY/ LIMERICK	BASE METALS, BARYTES & SILVER	08/11/1991	
3668	MIDDLEWALK	TIPPERARY/ OFFALY	BASE METALS, BARYTES & SILVER	20/01/1992	
3678	KNIGH	TIPPERARY	BASE METALS, BARYTES & SILVER	11/03/1992	
3425	MONSEA	TIPPERARY	BASE METALS, BARYTES & SILVER	05/03/1993	
3727	SOPWELL	TIPPERARY	BASE METALS, BARYTES & SILVER	05/03/1993	

**MINCO IRELAND LIMITED**  
 162 CLONTARF ROAD  
 DUBLIN 3

AREA	TOWNLANDS	COUNTY	MINERALS	START	SURRENDERED
626	LACKA	TIPPERARY	BASE METALS, BARYTES & SILVER	06/06/1994	
627	KNOCKSHIGOWNA	TIPPERARY	BASE METALS, BARYTES & SILVER	06/06/1994	
2530	DROMBANE	LIMERICK	BASE METALS, BARYTES & SILVER	13/11/1995	
635	ROXBOROUGH	LIMERICK	BASE METALS, BARYTES & SILVER	06/12/1996	
636	WHITEHALL	LIMERICK	BASE METALS, BARYTES & SILVER	06/12/1996	
2529	CAHERCONLISH	LIMERICK	BASE METALS, BARYTES & SILVER	06/12/1996	
3777	NUNSLAND	KILDARE	BASE METALS, BARYTES, GOLD & SILVER	30/06/2003	
2239	JOHNSTOWN UPPER	WICKLOW	BASE METALS, BARYTES, GOLD & SILVER	28/07/2003	
3857	SLIEVEFOORE	WICKLOW/ WEXFORD	BASE METALS, BARYTES, GOLD & SILVER	28/07/2003	

**MINCO PLC–WESTLAND EXPLORATION LIMITED**

162 CLONTARF ROAD

DUBLIN 3

AREA	TOWNLANDS	COUNTY	MINERALS	START	SURRENDERED
3722	ATHLONE	WESTMEATH	BASE METALS, BARYTES & SILVER	05/10/1992	

**MINERAL ESTATES (IRELAND) LIMITED**

C/O W.A. EXPLORATION SERVICES PTY LIMITED

22 MONTES SQUARE

RIVERTON

WESTERN AUSTRALIA 6148

AUSTRALIA

AREA	TOWNLANDS	COUNTY	MINERALS	START	SURRENDERED
1453R	KILMOON (BY ASSIGNMENT)	MEATH	BASE METALS, SILVER, GOLD & BARYTES	18/09/1996	
1454	NAUL (BY ASSIGNMENT)	DUBLIN	BASE METALS, SILVER, GOLD & BARYTES	18/09/1996	
3220	LOUGHSHINNY (BY ASSIGNMENT)	DUBLIN	BASE METALS, BARYTES, SILVER & GOLD	18/09/1996	
3221	BALROTHERY (BY ASSIGNMENT)	DUBLIN	BASE METALS, SILVER, GOLD & BARYTES	01/07/1998	
1450	KILBREW	DUBLIN/ MEATH	BASE METALS, BARYTES & SILVER	29/07/2002	
3218	RAHILLION	DUBLIN	BASE METALS, BARYTES & SILVER	29/07/2002	
3219	JORDANSTOWN	DUBLIN	BASE METALS, BARYTES & SILVER	29/07/2002	
3261	LACYSTOWN	MEATH	BASE METALS, BARYTES & SILVER	29/07/2002	
3664	WESTPALSTOWN	DUBLIN	BASE METALS, BARYTES & SILVER	29/07/2002	
3665	MAINSCOURT	DUBLIN	BASE METALS, BARYTES & SILVER	29/07/2002	
3875	SCATTERNAGH	MEATH	BASE METALS, BARYTES & SILVER	29/07/2002	

**NAVAN RESOURCES PLC.**  
 ORMONDE HOUSE  
 METGES LANE  
 NAVAN  
 CO. MEATH

AREA	TOWNLAND	COUNTY	MINERALS	START	SURRENDERED
541	POLLNAHINCA	GALWAY	BASE METALS, SILVER, GOLD & BARYTES	03/04/1995	
3660	DIAMOR	MEATH	BASE METALS, SILVER, GOLD & BARYTES	10/05/1995	
3839	CROSSAKEEL	MEATH	BASE METALS, SILVER, GOLD & BARYTES	10/05/1995	
1383	BOTTOMY	WESTMEATH	BASE METALS, BARYTES & SILVER	24/05/1995	23/05/2003
1384	COOLE	WESTMEATH	BASE METALS, SILVER, GOLD & BARYTES	24/05/1995	23/05/2003
1385	MAYNE	WESTMEATH	BASE METALS, BARYTES & SILVER	24/05/1995	23/05/2003
1587	GRANARD	LONGFORD	BASE METALS, SILVER, GOLD & BARYTES	14/12/1995	
2	LISSANISKA NORTH	GALWAY	BASE METALS, SILVER & BARYTES	30/06/1997	27/10/2003
4	LISHEENNAGAT	GALWAY	BASE METALS, SILVER & BARYTES	30/06/1997	
2685	MOORFIELD	GALWAY	BASE METALS, SILVER & BARYTES	30/06/1997	27/10/2003
3615	LISNAGRY	GALWAY	BASE METALS, SILVER & BARYTES	30/06/1997	
3862	FOXHALL	GALWAY	BASE METALS, SILVER & BARYTES	30/06/1997	27/10/2003
3475	NEWTOWN	OFFALY	BASE METALS, SILVER & BARYTES	01/09/1997	

**NAVAN RESOURCES PLC.**  
 ORMONDE HOUSE  
 METGES LANE  
 NAVAN  
 CO. MEATH

AREA	TOWNLANDS	COUNTY	MINERALS	START	SURRENDERED
3477	PORTLAND	TIPPERARY	BASE METALS, SILVER & BARYTES	01/09/1997	
3861	OLDSTREET	GALWAY	BASE METALS, SILVER & BARYTES	01/09/1997	
1349	CLONNAGEERAGH	WESTMEATH	BASE METALS, SILVER, GOLD BARYTES & DIAMONDS	24/10/1997	23/10/2003
134	CARNAUN	GALWAY	BASE METALS, BARYTES & SILVER	29/02/2000	
2100	BRACKLOON	GALWAY	BASE METALS, BARYTES & SILVER	29/02/2000	
2092	TRISTAUN	GALWAY	BASE METALS, BARYTES & SILVER	27/09/2000	
767	LAURENCETOWN	GALWAY	BASE METALS, BARYTES & SILVER	30/04/2001	
2093	SOMERSET	GALWAY	BASE METALS, BARYTES & SILVER	30/04/2001	
2105	FALTIA	ROSCOMMON	BASE METALS, BARYTES & SILVER	30/04/2001	
2686	FEAGH	GALWAY	BASE METALS, BARYTES & SILVER	30/04/2001	
3507	CAMUS	GALWAY	BASE METALS, BARYTES & SILVER	29/04/2002	
3913	LISSANACODY	GALWAY	BASE METALS, BARYTES & SILVER	29/04/2002	

**NAVAN RESOURCES PLC.**  
ORMONDE HOUSE  
METGES LANE  
NAVAN  
CO. MEATH

AREA	TOWNLANDS	COUNTY	MINERALS	START	SURRENDERED
3914	KILNABORRIS	GALWAY	BASE METALS, BARYTES & SILVER	29/04/2002	

**NORANDA EXPLORATION IRELAND LIMITED**

35 CLEEVAUN  
CRADDOCKSTOWN ROAD  
NAAS  
CO. KILDARE

AREA	TOWNLAND	COUNTY	MINERALS	START	SURRENDERED
1942	CLONCAGH	LIMERICK	BASE METALS, BARYTES & SILVER	13/01/1999	
2845	REENS EAST	LIMERICK	BASE METALS, BARYTES & SILVER	13/01/1999	
1303	MAHOONAGH MORE	LIMERICK	BASE METALS, BARYTES & SILVER	25/01/1999	
1940	LYRAGH	CORK	BASE METALS, BARYTES & SILVER	25/01/1999	
1946	CAPPANIHANE	LIMERICK	BASE METALS, BARYTES & SILVER	25/01/1999	
3650	BALLYMURRAGH	LIMERICK	BASE METALS, BARYTES & SILVER	25/01/1999	
1947	DERRAULIN	LIMERICK	BASE METALS, BARYTES & SILVER	25/02/1999	
3342	COOGA LOWER	LIMERICK	BASE METALS, BARYTES & SILVER	25/05/1999	
3344	BRITTAS	LIMERICK	BASE METALS, BARYTES & SILVER	25/05/1999	
449	GRANGE	LIMERICK	BASE METALS, BARYTES & SILVER	20/03/2000	
450	KILDROMIN	LIMERICK	BASE METALS, BARYTES & SILVER	20/03/2000	
2531	WONDERHILL	LIMERICK	BASE METALS, BARYTES & SILVER	20/03/2000	
2638	FEDAMORE	LIMERICK	BASE METALS, BARYTES & SILVER	20/03/2000	

**NORANDA EXPLORATION IRELAND LIMITED**

35 CLEEVAUN  
CRADDOCKSTOWN ROAD  
NAAS  
CO. KILDARE

AREA	TOWNLAND	COUNTY	MINERALS	START	SURRENDERED
2927	KILPEACON	LIMERICK	BASE METALS, BARYTES & SILVER	20/03/2000	
3367	MEANUS	LIMERICK	BASE METALS, BARYTES & SILVER	20/03/2000	
3431	LISNAGRY	LIMERICK	BASE METALS, BARYTES & SILVER	23/03/2000	
1943	KILMEEDY	LIMERICK	BASE METALS, BARYTES & SILVER	20/11/2000	
2594	BALLYOWEN	LIMERICK	BASE METALS, BARYTES & SILVER	20/11/2000	
3651	FEOHANAGH	LIMERICK	BASE METALS, BARYTES & SILVER	20/11/2000	
3550	CLOONLARA	CLARE	BASE METALS, BARYTES & SILVER	30/04/2001	
3807	ANNAHOLTY	TIPPERARY & LIMERICK	BASE METALS, BARYTES & SILVER	30/04/2001	
2850	PORTNARD	LIMERICK	BASE METALS, BARYTES & SILVER	17/07/2001	
3908	INCHMORE	LIMERICK	BASE METALS, BARYTES & SILVER	17/07/2001	

**ORMONDE BRICK LIMITED**

CASTLECOMER

CO. KILKENNY

AREA	TOWNLANDS	COUNTY	MINERALS	START	SURRENDERED
3345	GORTEEN (PART)	KILKENNY	COAL & FIRECLAY	14/09/1998	

**OVOCA RESOURCES PLC.**ADRIGOLE  
BEARA  
CO. CORK

AREA	TOWNLANDS	COUNTY	MINERALS	START	SURRENDERED
3858	ASHGROVE	LIMERICK	BASE METALS, BARYTES & SILVER	17/01/1997	
3859	BALLYNACALLY	LIMERICK	BASE METALS, BARYTES & SILVER	17/01/1997	
3545	KILCOLMAN	LIMERICK	BASE METALS, BARYTES & SILVER	11/02/1999	

**RENNICKS AND BENNETT LIMITED**

26 UPPER MOUNT STREET

DUBLIN 2

AREA	TOWNLANDS	COUNTY	MINERALS	START	SURRENDERED
1496	SCALLANSTOWN	MEATH	BASE METALS, BARYTES & SILVER	16/08/1971	

**SABINA RESOURCES LIMITED**

55 WESTCHESTER DRIVE

LONDON

ONTARIO N6G 2K6

CANADA

AREA	TOWNLANDS	COUNTY	MINERALS	START	SURRENDERED
2096	RAHALLY	GALWAY	BASE METALS, SILVER & BARYTES	27/05/1999	
2097	BOOKEEN SOUTH	GALWAY	BASE METALS, SILVER & BARYTES	27/05/1999	
2760	COSMONA	GALWAY	BASE METALS, SILVER & BARYTES	27/05/1999	

**TARA MINES LIMITED**KNOCKUMBER HOUSE  
KNOCKUMBER ROAD  
NAVAN, CO. MEATH

AREA	TOWNLANDS	COUNTY	MINERALS	START	SURRENDERED
1489R	DUNMOE (BY ASSIGNMENT)	MEATH	BASE METALS, BARYTES, GOLD & SILVER	26/10/1970	
1380R	ARDBRACCAN (PART) (BY ASSIGNMENT)	MEATH	BASE METALS, BARYTES, GOLD & SILVER	31/12/1970	
1661R	LISCARTON (PART) (BY ASSIGNMENT)	MEATH	BASE METALS, BARYTES, GOLD & SILVER	31/12/1971	
3246	DERRYCOOGH	TIPPERARY	BASE METALS, BARYTES & SILVER	05/12/1986	
1949	KILMALLOCK	LIMERICK	BASE METALS, BARYTES & SILVER	27/05/1987	
3249	MOUNTCOOTE	LIMERICK	BASE METALS, BARYTES & SILVER	27/05/1987	
3366	KILFINNY	LIMERICK	BASE METALS, BARYTES & SILVER	27/04/1988	
3368	TORYHILL	LIMERICK	BASE METALS, BARYTES & SILVER	27/04/1988	
3369	CROOM	LIMERICK	BASE METALS, BARYTES & SILVER	27/04/1988	
3488	WOLFESBURGESS WEST (BY ASSIGNMENT)	LIMERICK	BASE METALS, BARYTES & SILVER	02/05/1988	
3489	RATHKEALE (BY ASSIGNMENT)	LIMERICK	BASE METALS, BARYTES & SILVER	02/05/1988	
580	GOWLAN	LONGFORD	BASE METALS, BARYTES & SILVER	19/05/1988	
3364	BALLINALEE OR SAINT JOHNSTOWN	LONGFORD	BASE METALS, BARYTES, GOLD & SILVER	19/05/1988	

**TARA MINES LIMITED**KNOCKUMBER HOUSE  
KNOCKUMBER ROAD  
NAVAN, CO. MEATH

AREA	TOWNLANDS	COUNTY	MINERALS	START	SURRENDERED
1588	DRUMEEL	LONGFORD	BASE METALS, BARYTES & SILVER	28/03/1990	
3622	BECTIVE	MEATH	BASE METALS, BARYTES & SILVER	30/03/1990	
3634	KILLETER	LONGFORD	BASE METALS, BARYTES & SILVER	08/01/1991	
666	EDGEWORTHSTOWN	LONGFORD	BASE METALS, BARYTES & SILVER	04/03/1991	
786	ADARE (BY ASSIGNMENT)	LIMERICK	BASE METALS, BARYTES & SILVER	01/05/1991	
1583	NEWPARK (BY ASSIGNMENT)	LIMERICK	BASE METALS, BARYTES & SILVER	01/05/1991	
3373	BARFORDSTOWN	MEATH	BASE METALS, BARYTES & SILVER	01/03/1993	
3633	LISDUFF (E.D. LONGFORD RURAL)	LONGFORD	BASE METALS, BARYTES, GOLD & SILVER	03/06/1993	
581	DERRYGLOGHER	LONGFORD	BASE METALS, BARYTES & SILVER	28/12/1993	
3785	KILLEEN	TIPPERARY	BASE METALS, BARYTES & SILVER	07/03/1994	
1302	ENNISCOUSH	LIMERICK	BASE METALS, BARYTES & SILVER	28/06/1994	
1584	ARDNAPREAGHAUN	LIMERICK	BASE METALS, BARYTES & SILVER	28/06/1994	
184	BACK OF THE HILL	LONGFORD	BASE METALS, BARYTES & SILVER	20/01/1995	

**TARA MINES LIMITED**

KNOCKUMBER HOUSE

KNOCKUMBER ROAD

NAVAN, CO. MEATH

AREA	TOWNLANDS	COUNTY	MINERALS	START	SURRENDERED
643	CORROWROE (E.D. KILLEEN)	GALWAY	BASE METALS, BARYTES, GOLD, & SILVER	20/04/1995	
3840	LECARROW	GALWAY	BASE METALS, BARYTES, GOLD, & SILVER	20/04/1995	
1324	KILBRIDE	MEATH	BASE METALS, BARYTES & SILVER	16/11/1995	
2774	RINVANNY	LONGFORD	BASE METALS, BARYTES & SILVER	10/09/1997	09/12/2003
3404	URLINGFORD	KILKENNY	BASE METALS, BARYTES & SILVER	10/09/1997	
185	KEENAGH	LONGFORD	BASE METALS, BARYTES & SILVER	14/10/1999	
1183	GREATISLAND	WEXFORD	BASE METALS, BARYTES, GOLD & SILVER	10/03/2000	
1185	NEWBAWN	WEXFORD	BASE METALS, BARYTES, GOLD & SILVER	10/03/2000	
1188	SCULLABOGE	WEXFORD	BASE METALS, BARYTES, GOLD & SILVER	10/03/2000	
1190	CLONROCHE	WEXFORD	BASE METALS, BARYTES, GOLD & SILVER	10/03/2000	
1191	TEMPLESCOBY	WEXFORD	BASE METALS, BARYTES, GOLD & SILVER	10/03/2000	
1192	KILPIERCE	WEXFORD	BASE METALS, BARYTES, GOLD & SILVER	10/03/2000	
1193	ENNISCORTHY (PART)	WEXFORD	BASE METALS, BARYTES, GOLD & SILVER	10/03/2000	

**TARA MINES LIMITED**

KNOCKUMBER HOUSE

KNOCKUMBER ROAD

NAVAN, CO. MEATH

AREA	TOWNLANDS	COUNTY	MINERALS	START	SURRENDERED
1194	BALLYSIMON	WEXFORD	BASE METALS, BARYTES, GOLD & SILVER	10/03/2000	
1196	FERNS	WEXFORD	BASE METALS, BARYTES, GOLD & SILVER	10/03/2000	
1197	BALLYTRACEY	WEXFORD	BASE METALS, BARYTES, GOLD & SILVER	10/03/2000	
1198	CAMOLIN	WEXFORD	BASE METALS, BARYTES, GOLD & SILVER	10/03/2000	
1199	BALLOUGHTER	WEXFORD	BASE METALS, BARYTES, GOLD, & SILVER	10/03/2000	
1200	GOREYHILL	WEXFORD	BASE METALS, BARYTES, GOLD & SILVER	10/03/2000	
1201	RAHEENAGURREN EAST	WEXFORD	BASE METALS, BARYTES, GOLD & SILVER	10/03/2000	
1813	INCH	WEXFORD	BASE METALS, BARYTES, GOLD & SILVER	10/03/2000	
3264	DRANAGH	WEXFORD	BASE METALS, BARYTES, GOLD & SILVER	10/03/2000	
3463	SALTMILLS (E.D. BALLYHACK)	WEXFORD	BASE METALS, BARYTES, GOLD & SILVER	10/03/2000	
3464	NASH	WEXFORD	BASE METALS, BARYTES, GOLD & SILVER	10/03/2000	
3465	ROCHESTOWN	WEXFORD	BASE METALS, BARYTES, GOLD & SILVER	10/03/2000	
3466	TEMPLESHELIN	WEXFORD	BASE METALS, BARYTES, GOLD & SILVER	10/03/2000	

**TARA MINES LIMITED**

KNOCKUMBER HOUSE

KNOCKUMBER ROAD

NAVAN, CO. MEATH

AREA	TOWNLANDS	COUNTY	MINERALS	START	SURRENDERED
3822	ADAMSTOWN	WEXFORD	BASE METALS, BARYTES, GOLD & SILVER	10/03/2000	
3851	NUGENTSTOWN	MEATH	BASE METALS, BARYTES & SILVER	30/04/2001	
3590	BALLYGARRETT	WEXFORD	BASE METALS, BARYTES, GOLD & SILVER	11/06/2001	
3912	RATHALDRON	MEATH	BASE METALS, BARYTES, & SILVER	19/04/2002	
1948	KNOCKFENORA	LIMERICK	BASE METALS, BARYTES, GOLD & SILVER	11/07/2002	
3581	DOONMOON	LIMERICK	BASE METALS, BARYTES, GOLD & SILVER	29/07/2002	
3582	BOTTOMSTOWN	LIMERICK	BASE METALS, BARYTES, GOLD & SILVER	29/07/2002	
3476	ROEGARRAUN	TIPPERARY	BASE METALS, BARYTES & SILVER	24/02/2003	

**TOURNIGAN GOLD CORPORATION**

SUITE 520-800 WEST PENDER STREET  
VANCOUVER, BRITISH COLUMBIA  
CANADA V6C 2V6

AREA	TOWNLANDS	COUNTY	MINERALS	START	SURRENDERED
3820	WHITECASTLE	DONEGAL	BASE METALS, GOLD & SILVER	11/09/2003	
3063	CULINEEN	DONEGAL	BASE METALS, GOLD & SILVER	11/09/2003	
3095	AUGHT	DONEGAL	BASE METALS, GOLD & SILVER	11/09/2003	
3922	GARVARY	DONEGAL	BASE METALS, GOLD & SILVER	11/09/2003	
3921	MEENKEERAGH	DONEGAL	BASE METALS, GOLD & SILVER	11/09/2003	
2351	WOODPARK	DONEGAL	BASE METALS, GOLD & SILVER	11/09/2003	
2354	KIRKNEEDY	DONEGAL	BASE METALS, GOLD & SILVER	11/09/2003	
2357	CASTLEBANE	DONEGAL	BASE METALS, GOLD & SILVER	11/09/2003	
3123	SHANNAGH	DONEGAL	BASE METALS, GOLD & SILVER	11/09/2003	
3093	SIXTY ACRES	DONEGAL	BASE METALS, GOLD & SILVER	11/09/2003	
3217	GORTKILLY	DONEGAL	BASE METALS, GOLD & SILVER	11/09/2003	
3224	DRUMDOIT	DONEGAL	BASE METALS, GOLD & SILVER	11/09/2003	
2359	MOUNTHALL	DONEGAL	BASE METALS, GOLD & SILVER	11/09/2003	
2358	BLAIRSTOWN	DONEGAL	BASE METALS, GOLD & SILVER	11/09/2003	
3040	TULLYGALLAN	DONEGAL	BASE METALS, GOLD & SILVER	11/09/2003	

**VULCANOR EXPLORATIONS LIMITED**

27 EUSTACE STREET  
TEMPLE BAR  
DUBLIN 2

AREA	TOWNLANDS	COUNTY	MINERALS	START	SURRENDERED
3346	KILDALKEY	MEATH	BASE METALS, BARYTES & SILVER	16/09/1996	13/07/2003
3852	FRAINE	MEATH	BASE METALS, BARYTES & SILVER	16/09/1996	13/07/2003

**WESTLAND EXPLORATION LIMITED**

162 CLONTARF ROAD

DUBLIN 3

AREA	TOWNLANDS	COUNTY	MINERALS	START	SURRENDERED
1226	BALLYMORE (BY ASSIGNMENT)	WESTMEATH	BASE METALS, BARYTES & SILVER	16/05/1968	
1228	CREEVE (BY ASSIGNMENT)	WESTMEATH	BASE METALS, BARYTES & SILVER	16/05/1968	
1229	GLEN (BY ASSIGNMENT)	WESTMEATH	BASE METALS, BARYTES & SILVER	16/05/1968	
1440R	GIBSTOWN (BY ASSIGNMENT)	MEATH	BASE METALS, BARYTES & SILVER	23/10/1972	
1653	COOLBALLY (BY ASSIGNMENT)	LAOIS	BASE METALS, BARYTES & SILVER	22/02/1983	
505	CLONYEGAN	WESTMEATH	BASE METALS, BARYTES & SILVER	22/06/1985	
506	BOYANAGH (EARL)	WESTMEATH/ OFFALY	BASE METALS, BARYTES & SILVER	22/06/1985	

## **PART 3**

### *Receipts*

#### **Moneys collected by the Minister in the period from 1 July 2003 to 31 December 2003 under Minerals Development Acts, 1940-1999**

The total amount of moneys collected by the Minister under or by virtue of any lease, permission, or licence under those Acts set out in the list in Part 5 was €35,466.75.

#### **Other receipts in the said period**

The total amount of moneys collected by the Minister during the period from other sources [leases granted under the Mines and Minerals Act, 1931 (No. 54)] amounted to €0.87.

## **PART 4**

### ***Minerals Acquisition Orders made under the Minerals Development Act, 1940***

#### **Minerals Acquisition Orders made under that Act were:**

- (i)** Minerals Acquisition (Slieveardagh Coalfield) Order, 1941 (lands near Thurles, Co. Tipperary) (Coal)
- (ii)** Minerals Acquisition (County Roscommon) Order, 1942 (lands near Gubbarudda, Co. Roscommon) (All minerals)
- (iii)** Minerals Acquisition Order 1946 (lands near Kingscourt, Co. Cavan) (All minerals)
- (iv)** Minerals Acquisition Order 1954 (lands near Avoca, Co. Wicklow) (All minerals)
- (v)** Minerals Acquisition Order 1955 (lands near Avoca, Co. Wicklow) (All minerals)
- (vi)** Minerals Acquisition (East Clare) Order, 1956 (lands near Ennis) (All minerals)
- (vii)** Minerals Acquisition (Roaring Water) Order, 1956 (lands near Skibbereen, Co. Cork) (All minerals)
- (viii)** Minerals Acquisition (Kenmare) Order, 1956 (lands near Kenmare, Co. Kerry) (All minerals)
- (ix)** Minerals Acquisition (Bonmahon) Order, 1956 (lands near Bonmahon, Co. Waterford) (All minerals)
- (x)** Minerals Acquisition (Allihies) Order, 1957 (lands near Allihies, Co. Cork) (All minerals)
- (xi)** Minerals Acquisition (Allihies) Order, 1960 (lands near Allihies, Co. Cork) (All minerals)
- (xii)** Minerals Acquisition (Carhoon and other townlands) Order, 1962 (lands near Tynagh, Co. Galway) (All minerals)
- (xiii)** Minerals Acquisition (Druming and other townlands) Order, 1963 (lands near Druming, Co. Longford) (All minerals)
- (xiv)** Minerals Acquisition (Ardateggle and other townlands) Order, 1964 (lands near Rossmore, Co. Laois) (All minerals)
- (xv)** Minerals Acquisition (Gortdrum and other townlands) Order, 1965 (lands near Gortdrum, Co. Tipperary) (All minerals)
- (xvi)** Minerals Acquisition (Gortnacleha and other townlands) Order, 1965 (lands near Silvermines, Co. Tipperary) (All minerals)
- (xvii)** Minerals Acquisition (Ballybeg, Co. Clare) Order, 1970 (All minerals)

## **PART 5**

### ***Main Legislation Governing Minerals Prospecting and Development in Ireland***

The main legislative provisions governing minerals prospecting and development in Ireland in the period of this report are contained in the **Minerals Development Acts, 1940-1999**, and **Regulations** made thereunder:

#### **Minerals Development Acts**

- Minerals Development Act, 1940 (No. 31)
- Petroleum and Other Minerals Development Act, 1960 (No. 7)
- Minerals Development Act, 1979 (No. 12)
- Minerals Development Act, 1995 (No. 15)
- Minerals Development Act, 1999 (No. 21)
- Merchant Shipping (Investigation of Casualties) Act, 2000 (No. 14)

#### **Regulations**

- Minerals Development Regulations, 1979 (No. 340)
- Minerals Development (Amendment) Regulations, 1994 (No. 319)
- Minerals Development (Application fees for certain State mining facilities) Regulations, 1996 (No. 259)

## PART 6

### *Relevant Recent Publications by the Department*

#### General

- Current State Mining and Prospecting Facilities and Areas Open for Application Under Competition, With Map, 1<sup>st</sup> November 2003. MP22/03. 47pp.
- Exploration and Mining Facilities. MP 10/03. 6pp.
- Land of Mineral Opportunities. MP 11/03. 6pp.
- Environmental Safeguards - the Irish Way. MP 09/03. 4pp.
- Mine Waste Management Workshop, Dublin, 2002. MP 25/03. Available on CD.
- Industry News (March 2003). MP 13/03. 6pp.
- Zinc and Lead in Ireland. MP 07/03. 6pp.
- Gold in Ireland. MP 08/03. 4pp.
- The “Top 55” Deposits. MP 06/03. 14pp.
- Airborne Data Release Initiative 2001. MP 12/03. 4pp.
- Joint Venture Opportunities in Ireland. MP 17/03. 8pp.
- Exploration Permit Areas and Status (Feb. 2003). MP 05/03. Available on CD.

#### Minfo Leaflets

- Exploration Focus - Clontibret Gold Prospect (1993). Minfo 10/93. 4pp.
- Glangevlin Gypsum Deposit (1995). Minfo 12/95. 4pp.
- Guidelines for Good Environmental Practice in Mineral Exploration. Minfo 1/01. 4pp.
- Consultants and Contractors in Ireland. Minfo 1/02. 4pp.
- Fiscal Framework. Minfo 2/02. 4pp.
- Guidelines for Regional Airborne Geophysical Surveying for Minerals. Minfo 5/02. 2pp.
- Support Agencies. Minfo 3/02. 2pp.

#### Exploration Data Release (available on CD)

- Airborne magnetic survey (1995) Midlands, Oldtown and Harberton Bridge areas. MP 09/01. 43pp.
- Airborne magnetic and TEM survey (1995) Lisheen/Galmoy, Clonmel and Tullamore areas. MP 10/01. 14pp.
- Airborne magnetic and TEM survey (1996) Galmoy area. MP 11/01. 11pp.
- Airborne magnetic and radiometric survey (1996) Inishannon and Lismore areas. MP 13/01. 12pp.
- Airborne magnetic and TEM survey (1996) Lisheen, Silvermines and Lough Derg areas. MP 14/01. 12pp.
- Airborne magnetic and TEM survey (1997) Carrickmacross, Newbridge, Summerhill, Tullamore and Lisheen and Navan test areas. MP 16/01. 16pp.
- Exploration data release (to 1996) over parts of Co. Tipperary and Co. Offaly. MP 03/02.
- Airborne TEM and magnetic survey (1997) over the Portumna and Clare areas. MP 09/02. 12pp.
- Airborne TEM and magnetic survey (1997) over the Tullamore area. MP 11/02. 12pp.
- Airborne TEM and magnetic survey (1998) over the Limerick, Gort and Newbridge South area. MP 13/02. 11pp.
- Airborne TEM and magnetic survey (1998) over the Limerick area. MP 15/02. 9pp.
- Airborne TEM and magnetic survey (1998) over the Silvermines area. MP 16/02. 11pp.
- Airborne magnetics survey (1997) over the Rathdowney area. MP 17/02. 8pp.
- Airborne magnetics survey (1998) over the Ferbane and Lough Derg (2) areas. MP 20/02. 13pp.
- Airborne magnetics survey (1998) over the Tulla, East Clare, area. MP 21/02. 9pp.
- Airborne magnetic survey (1998) over the Tipperary area. MP 22/02. 9pp.
- Arcon Airborne Magnetic Survey (1996) over the Galmoy area. MP 23/02. 8pp.
- Exploration data release (to 2002) over parts of Cos. Galway, Roscommon, Westmeath, Offaly. MP 02/03.
- BHP Airborne TEM and Magnetic survey (1998) over Fermoy East and West, Ballinalack, Carrickmines East, Clare, Lough Sheelin and Mohill areas. MP 14/03. 10pp.
- Exploration data release (1972-2001) over parts of Cos. Meath, Westmeath and Offaly. MP 19/03.

**PART 7*****Dáil Questions Answered by the Minister for Communications, Marine and Natural Resources in the Six Months ended 31 December 2003 in Relation to Minerals Matters***

<b>Questions</b> (W = Written, O = Oral)	<b>Date answered</b>
<b>To ask the Minister for Communications, Marine and Natural Resources:</b>	
<p>... the details of all working groups, advisory groups, consultancies and so on, established or commissioned by his Department since January 2001; the membership of each; the date expected to report; and if it is planned that the reports be published.</p> <p>(W) – Jerry Cowley</p>	30 September 2003
<p>... the latest available results of oil, gas and other mineral exploration tests; and if he will make a statement on the matter.</p> <p>(W) – Bernard J. Durkan</p>	7 October 2003
<p>... his proposals in regard to development of the various natural resources which come within the ambit of his Department; and if he will make a statement on the matter.</p> <p>(W) – Bernard J. Durkan</p>	7 October 2003
<p>... the position in regard to the document served on the former operators of a facility (details supplied) in County Tipperary specifying the remedial work to be carried out at the dried out tailings pond at the mine site; and if he will make a statement on the matter.</p> <p>(O) – Mary Upton (Nominated by: Thomas P. Broughan)</p>	7 October 2003
<p>... if he will report on the outcome of the Kimberly Process plenary meeting in South Africa between 29 and 31 October 2003, the positions taken by Irish representatives at the meeting; if an agreement was reached on regular impartial monitoring of country compliance; and if the Government has satisfied itself that the loopholes in the process have now been closed.</p> <p>(W) – Aengus Ó Snodaigh</p>	5 November 2003
<p>... the number of mining or exploration firms currently operating both on and offshore under licence from this jurisdiction or other jurisdictions; and if he will make a statement on the matter.</p> <p>(W) – Bernard J. Durkan</p>	11 November 2003

<p style="text-align: center;"><b>Questions</b> (W = Written, O = Oral)</p>	<p style="text-align: center;"><b>Date answered</b></p>
<p><b>To ask the Minister for Communications, Marine and Natural Resources:</b></p>	
<p>... the number of mining and exploration licences granted but not to date operational; and if he will make a statement on the matter. (W) – Bernard J. Durkan</p>	<p style="text-align: center;">11 November 2003</p>
<p>... the position in regard to exploration for oil, gas or other minerals; the extent to which positive results have merged in recent times; and if he will make a statement on the matter. (W) – Bernard J. Durkan</p>	<p style="text-align: center;">11 November 2003</p>
<p>... the position regarding his case for objecting to the preferred route of the N9 at Maddoxtown, Kilree, County Kilkenny and his claim for compensation; if the State mining lease will be extended to the southern boundary of the Roadstone Dunbell Quarry; his plans to extend the lease beyond the southern boundary of the quarry at Dunbell; his further plans to renew the lease when it expires in 2008; if discussions have taken place in this regard; and if he will make a statement on the matter. (W) – John McGuinness</p>	<p style="text-align: center;">11 November 2003</p>
<p>... the position in regard to the document served on the former operators of a facility (details supplied) in County Tipperary; the remedial work to be carried out at the dried out tailings pond at the mine site; and if he will make a statement on the matter. (O) – Pat Rabbitte (Nominated by: Thomas P. Broughan)</p>	<p style="text-align: center;">11 November 2003</p>
<p>... if his Department objected to the location of the preferred route of the motorway proposal M9 at Ballyreddin, Bennettsbridge, County Kilkenny, at the time of the consultation process; if so, the precise nature of the objection; if no representations were made to him by a company (details supplied) to seek his support against the provision of the motorway route at this location; and if he will make a statement on the matter. (W) – Phil Hogan</p>	<p style="text-align: center;">25 November 2003</p>
<p>... the amount which has been paid in royalties to his Department on dolomite extracted at Maddoxtown Quarry, County Kilkenny, over the past ten years; if there is a tonnage rate for dolomite relative to the royalties paid; if so, the rate for the past ten years; and if he will make a statement on the matter. (W) – John McGuinness</p>	<p style="text-align: center;">2 December 2003</p>

<b>Questions</b> <b>(W = Written, O = Oral)</b>	<b>Date answered</b>
<b>To ask the Minister for Communications, Marine and Natural Resources:</b>	
<p>... if he will set aside his objection to the existing preferred route for the M9 Motorway at Ballyreddin, Bennettsbridge, County Kilkenny, in the interest of the common good; and if he will make a statement on the matter.  (W) – Phil Hogan</p>	<p>9 December 2003</p>
<p>... the action he has taken to enter into negotiations with Kilkenny County Council or the NRA to accommodate the preferred route of the N9 at Dunbell, Kilkenny, in an effort to avoid the devastation of a local rural community; the statutory basis for his Department's objection; the number of meetings which have taken place between his Department and others since this issue arose; if, in view of the fact that this mineral is scheduled under the 1941 Act, his Department will move to protect all deposits in this area; if the mineral will be removed from the schedule; the way in which he can justify a 13 fold increase in the royalty being paid; if the timing of each increase will be provided; and if he will make a statement on the matter.  (W) – John McGuinness</p>	<p>9 December 2003</p>
<p>... the position in regard to the document served on former operators of the Silvermines facility in County Tipperary, specifying the remedial work to be carried out at the dried out tailings pond at the mine site; and if he will make a statement on the matter.  (O) – Jan O’Sullivan (Nominated by: Thomas P. Broughan)</p>	<p>17 December 2003</p>